



SENGKANG GRAND
RESIDENCES

Welcome to an integrated
landmark that is set to redefine
the joy and convenience of
living in Sengkang.

EXPLORE YOUR PLAYGROUND



RECREATION CLUB

- 1. Circle Lounge
- 2. BBQ Pavilion
- 3. Aqua Pod
- 4. Social Pavilion
- 5. Poolside BBQ Pavilion
- 6. Dip Pool
- 7. Welcome Pavilion
- 8. Teepee Gardening
- 9. Gourmet Pavilion

ADVENTURE CLUB

- 10. Trampoline Thrill
- 11. Tower Tree Slide
- 12. Playhouse on Lawn
- 13. Kids' Play Pool
- 14. Mini Golf
- 15. Animal Sculpture Playground
- 16. Pets' Play

FITNESS CLUB

- 17. Reflexology Path
- 18. 3G Fitness
- 19. 50m Lap Pool
- 20. Yoga Lawn
- 21. Parkour Gym

SENSORY CLUB

- 22. Five Senses Garden
- 23. Cascading Water Feature
- 24. TreeTop Walk
- 25. Water Weir Wall
- 26. Misty Garden

WELLNESS CLUB

- 27. Spectrum Spa Pool
- 28. Hammock Lawn
- 29. Aqua Hammock
- 30. Floating Tea Deck
- 31. Wellness Spa Pool
- 32. Swinging Day Bed
- 33. Bubble Leisure Pool

MAIN CLUBHOUSE

- 34. Gymnasium
- 35. Arrival Lobby
- 36. Changing Rooms
- 37. Nursing Room
- 38. Main Function Room

SOCIAL CLUBHOUSE

- 39. Social Function Room
- 40. Changing Room
- 41. Social Lounge

OTHERS

- A. Green Highline Access Gate
- B. Skylight of Sengkang Grand Mall
- C. Bin Centre (Level 1)
- D. Substation (Level 1)
- E. Genset (Level 3)
- F. Guardhouse (Level 3)
- G. Cooling Towers (Level 2)
- H. Bus Interchange Ingress / Egress (Level 1)
- I. Existing Buangkok MRT Structure (Level 1)
- J. New Bus Shelter (Level 1)

Sengkang Grand Residences is an integrated development with Hawker Centre (Level 2), Community Club (Level 1 - Level 3), Childcare Centre (Level 2), Retail Mall / Shops (Basement 1 - Level 2), Bus Interchange (Level 1), Buangkok MRT Station (Basement 1). For location of these components, please refer to the architectural models or the approved building plans. The renderings of the units as shown are for illustrative purposes only. The shading and outline of the unit type only apply to typical units. The boundary lines of the units set out here are not to be taken as a factual representation of the actual units. Kindly refer to the approved building plans for the actual unit outline / boundary lines.

- Water Tank (Roof Level)
- Carpark Ventilation (Level 3)

CHOOSE YOUR HOME

BLK 72 COMPASSVALE BOW (544693)

UNIT FLOOR	01	02	03	04	05	06	07	08
11	B1	C1a	C1	B5PS	B5PS	C3P	C5PF	A1S
10	B1	C1a	C1	B5PS	B5PS	C3P	C5PF	A1S
9	B1	C1a	C1	B5PS	B5PS	C3P	C5PF	A1S
8	B1	C1a	C1	B5PS	B5PS	C3P	C5PF	A1S
7	B1	C1a	C1	B5PS	B5PS	C3P	C5PF	A1S
6	B1	C1a	C1	B5PS	B5PS	C3P	C5PF	A1S
5	B1	C1a	C1	B5PS	B5PS	C3P	C5PF	A1S
4	B1(p)	C1a(p)	C1(p)	B5PS(p)	B5PS(p)	C3P(p)	C5PF(p)	A1S(p)

BLK 74 COMPASSVALE BOW (544567)

UNIT FLOOR	09	10	11	12	13	14	15	16
11	A1S	C2	C1	B5PS	B5PS	C3P	C2	A1S
10	A1S	C2	C1	B5PS	B5PS	C3P	C2	A1S
9	A1S	C2	C1	B5PS	B5PS	C3P	C2	A1S
8	A1S	C2	C1	B5PS	B5PS	C3P	C2	A1S
7	A1S	C2	C1	B5PS	B5PS	C3P	C2	A1S
6	A1S	C2	C1	B5PS	B5PS	C3P	C2	A1S
5	A1S	C2	C1	B5PS	B5PS	C3P	C2	A1S
4	A1S(p)	C2(p)	C1(p)	B5PS(p)	B5PS(p)	C3P(p)	C2(p)	A1S(p)

BLK 76 COMPASSVALE BOW (544568)

UNIT FLOOR	17	18	19	20	21	22	23	24
12	A1S	C5PF	D1PF	B5PS	B5PS	C1	C1a	B1
11	A1S	C5PF	D1PF	B5PS	B5PS	C1	C1a	B1
10	A1S	C5PF	D1PF	B5PS	B5PS	C1	C1a	B1
9	A1S	C5PF	D1PF	B5PS	B5PS	C1	C1a	B1
8	A1S	C5PF	D1PF	B5PS	B5PS	C1	C1a	B1
7	A1S	C5PF	D1PF	B5PS	B5PS	C1	C1a	B1
6	A1S	C5PF	D1PF	B5PS	B5PS	C1	C1a	B1
5	A1S	C5PF	D1PF	B5PS	B5PS	C1	C1a	B1
4	A1S(p)	C5PF(p)	D1PF(p)	B5PS(p)	B5PS(p)	C1(p)	C1a(p)	B1(p)

BLK 78 COMPASSVALE BOW (544569)

UNIT FLOOR	25	26	27	28	29	30	31	32
13	B6PS	B3	C3Pa	C2	B2	B2	C2	D2PF
12	B6PS	B3	C3Pa	C2	B2	B2	C2	D2PF
11	B6PS	B3	C3Pa	C2	B2	B2	C2	D2PF
10	B6PS	B3	C3Pa	C2	B2	B2	C2	D2PF
9	B6PS	B3	C3Pa	C2	B2	B2	C2	D2PF
8	B6PS	B3	C3Pa	C2	B2	B2	C2	D2PF
7	B6PS	B3	C3Pa	C2	B2	B2	C2	D2PF
6	B6PS	B3	C3Pa	C2	B2	B2	C2	D2PF
5	B6PS	B3	C3Pa	C2	B2	B2	C2	D2PF
4	B6PS(p)	B3(p)	C3Pa(p)	C2(p)	B2(p)	B2(p)	C2(p)	D2PF(p)

BLK 80 COMPASSVALE BOW (544570)

UNIT FLOOR	33	34	35	36	37	38	39	40
13	B4S	A4S	B2	D2PF	C3Pa	B3	A3S	A1S
12	B4S	A4S	B2	D2PF	C3Pa	B3	A3S	A1S
11	B4S	A4S	B2	D2PF	C3Pa	B3	A3S	A1S
10	B4S	A4S	B2	D2PF	C3Pa	B3	A3S	A1S
9	B4S	A4S	B2	D2PF	C3Pa	B3	A3S	A1S
8	B4S	A4S	B2	D2PF	C3Pa	B3	A3S	A1S
7	B4S	A4S	B2	D2PF	C3Pa	B3	A3S	A1S
6	B4S	A4S	B2	D2PF	C3Pa	B3	A3S	A1S
5	B4S	A4S	B2	D2PF	C3Pa	B3	A3S	A1S
4	B4S(p)	A4S(p)	B2(p)	D2PF(p)	C3Pa(p)	B3(p)	A3S(p)	A1S(p)

BLK 82 COMPASSVALE BOW (544571)

UNIT FLOOR	41	42	43	44	45	46	47	48
13	B1	C1a	C1	B5PS	B5PS	D1PF	C5PF	A1S
12	B1	C1a	C1	B5PS	B5PS	D1PF	C5PF	A1S
11	B1	C1a	C1	B5PS	B5PS	D1PF	C5PF	A1S
10	B1	C1a	C1	B5PS	B5PS	D1PF	C5PF	A1S
9	B1	C1a	C1	B5PS	B5PS	D1PF	C5PF	A1S
8	B1	C1a	C1	B5PS	B5PS	D1PF	C5PF	A1S
7	B1	C1a	C1	B5PS	B5PS	D1PF	C5PF	A1S
6	B1	C1a	C1	B5PS	B5PS	D1PF	C5PF	A1S
5	B1	C1a	C1	B5PS	B5PS	D1PF	C5PF	A1S
4	B1(p)	C1a(p)	C1(p)	B5PS(p)	B5PS(p)	D1PF(p)	C5PF(p)	A1S(p)

BLK 84 COMPASSVALE BOW (544572)

UNIT FLOOR	49	50	51	52	53	54	55	56
13	B1	C1a	C1	B5PS	B5PS	C3P	C5PF	A1S
12	B1	C1a	C1	B5PS	B5PS	C3P	C5PF	A1S
11	B1	C1a	C1	B5PS	B5PS	C3P	C5PF	A1S
10	B1	C1a	C1	B5PS	B5PS	C3P	C5PF	A1S
9	B1	C1a	C1	B5PS	B5PS	C3P	C5PF	A1S
8	B1	C1a	C1	B5PS	B5PS	C3P	C5PF	A1S
7	B1	C1a	C1	B5PS	B5PS	C3P	C5PF	A1S
6	B1	C1a	C1	B5PS	B5PS	C3P	C5PF	A1S
5	B1	C1a		B5PS	B5PS	C3P	C5PF	A1S
4	B1(p)	C1a(p)		B5PS(p)	B5PS(p)	C3P(p)	C5PF(p)	A1S(p)

BLK 86 COMPASSVALE BOW (544573)

UNIT FLOOR	58	59	60	61	62	63	64	65	66	67
13	A1S	C5PF	D1PF	B5PS	B5PS	A2S	C4P	C2a	A3S	A1S
12	A1S	C5PF	D1PF	B5PS	B5PS	A2S	C4P	C2a	A3S	A1S
11	A1S	C5PF	D1PF	B5PS	B5PS	A2S	C4P	C2a	A3S	A1S
10	A1S	C5PF	D1PF	B5PS	B5PS	A2S	C4P	C2a	A3S	A1S
9	A1S	C5PF	D1PF	B5PS	B5PS	A2S	C4P	C2a	A3S	A1S
8	A1S	C5PF	D1PF	B5PS	B5PS	A2S	C4P	C2a	A3S	A1S
7	A1S	C5PF	D1PF	B5PS	B5PS	A2S	C4P	C2a	A3S	A1S
6	A1S	C5PF	D1PF	B5PS	B5PS	A2S	C4P	C2a	A3S	A1S
5	A1S	C5PF	D1PF	B5PS	B5PS	A2S	C4P		A3S	A1S
4	A1S(p)	C5PF(p)	D1PF(p)	B5PS(p)	B5PS(p)	A2S(p)	C4P(p)		A3S(p)	A1S(p)

BLK 88 COMPASSVALE BOW (544574)

UNIT FLOOR	68	69	70	71	72	73	74	75
11	B1	C1a	C1	B5PS	B5PS	C1	C5PF	A1S
10	B1	C1a	C1	B5PS	B5PS	C1	C5PF	A1S
9	B1	C1a	C1	B5PS	B5PS	C1	C5PF	A1S
8	B1	C1a	C1	B5PS	B5PS	C1	C5PF	A1S
7	B1	C1a	C1	B5PS	B5PS	C1	C5PF	A1S
6	B1	C1a	C1	B5PS	B5PS	C1	C5PF	A1S
5	B1	C1a	C1	B5PS	B5PS	C1	C5PF	A1S
4	B1(p)	C1a(p)	C1(p)	B5PS(p)	B5PS(p)	C1(p)	C5PF(p)	A1S(p)

LEGEND

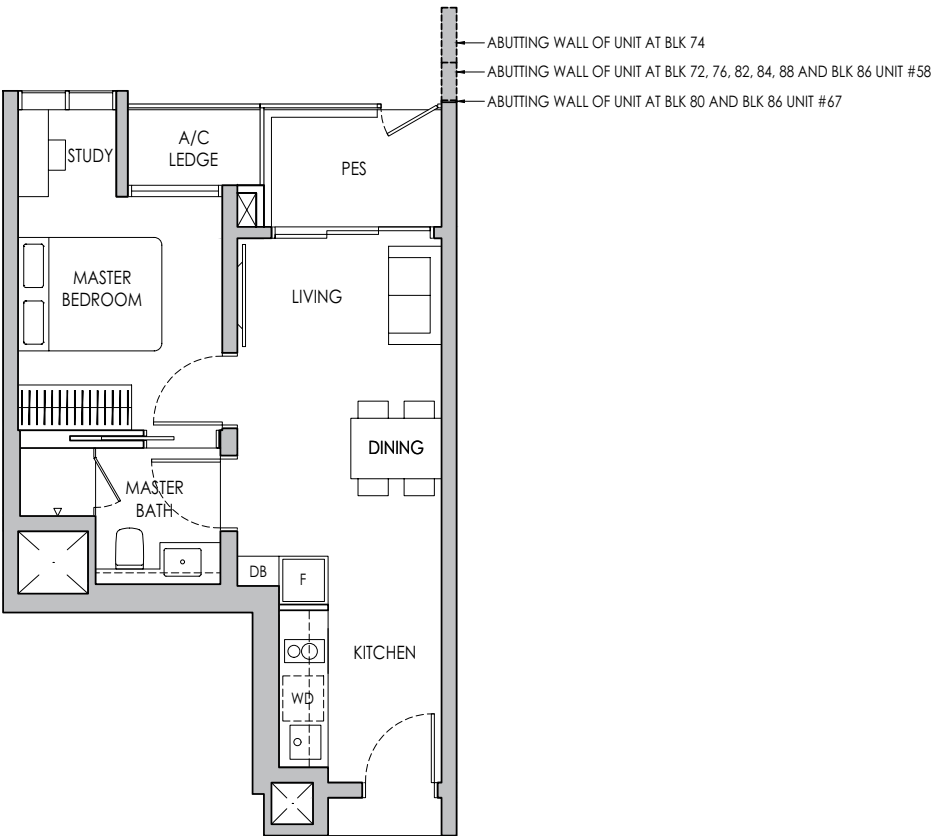
- 1-BEDROOM + STUDY
- 2-BEDROOM
- 3-BEDROOM
- 4-BEDROOM PREMIUM + FLEXI
- 2-BEDROOM + STUDY
- 3-BEDROOM PREMIUM
- 2-BEDROOM PREMIUM + STUDY
- 3-BEDROOM PREMIUM + FLEXI

1-BEDROOM + STUDY

Type A1S(p)

44 sq m / 474 sq ft

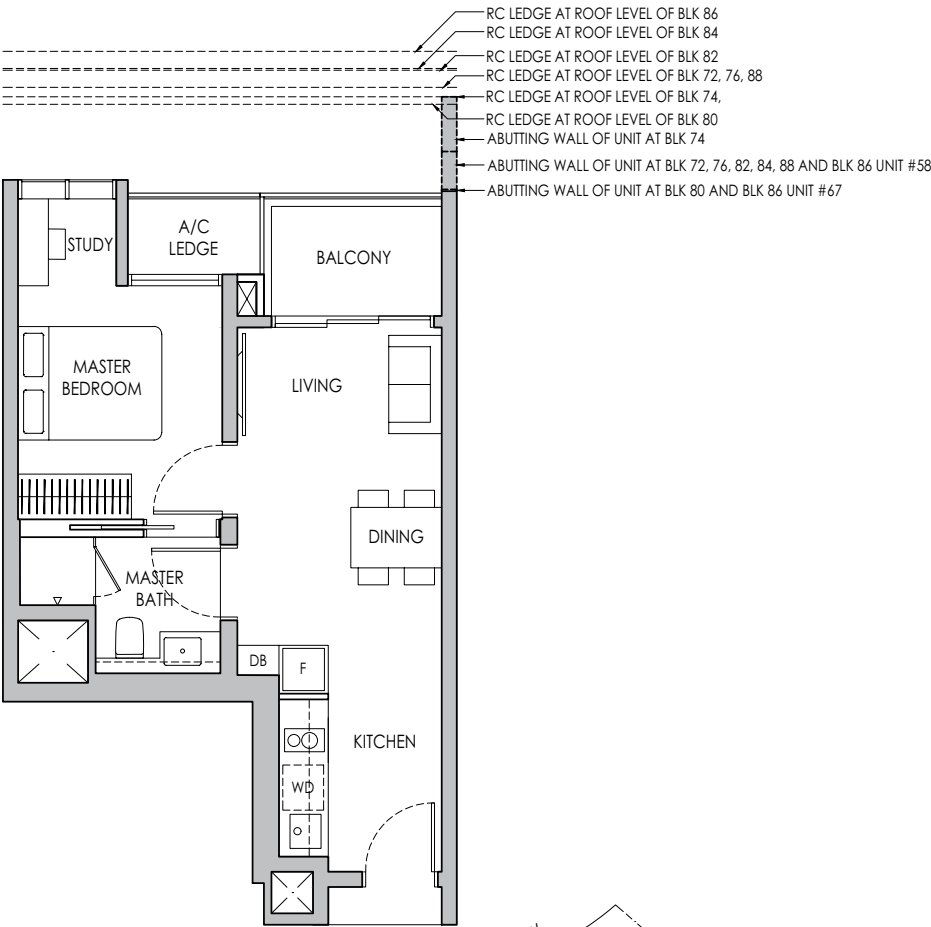
- BLK 72 #04-08*
- BLK 74 #04-09 / #04-16*
- BLK 76 #04-17
- BLK 80 #04-40*
- BLK 82 #04-48*
- BLK 84 #04-56*
- BLK 86 #04-58 / #04-67*
- BLK 88 #04-75*



Type A1S

44 sq m / 474 sq ft

- BLK 72 #05-08* - # 11-08*
- BLK 74 #05-09 - #11-09 / #05-16* - #11-16*
- BLK 76 #05-17 - #12-17
- BLK 80 #05-40* - #13-40*
- BLK 82 #05-48* - #13-48*
- BLK 84 #05-56* - #13-56*
- BLK 86 #05-58 - #13-58 / #05-67* - #13-67*
- BLK 88 #05-75* - #11-75*



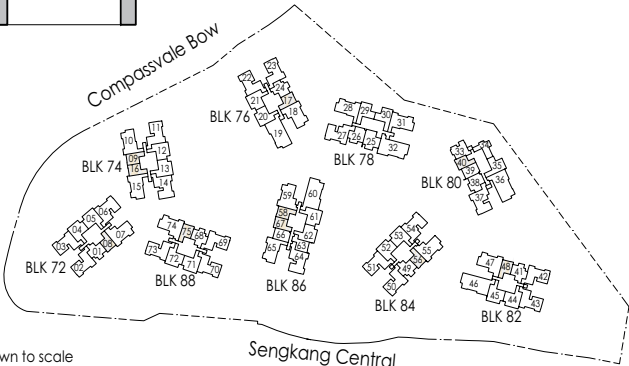
* Mirror Image



Area includes air-con (A/C) ledge, private enclosed space (PES), balcony and strata void area where applicable. Some units are mirror images of the apartment plans shown in the brochure. Please refer to the keyplan for orientation. The plans are subject to change as may be approved by relevant authorities. All floor plans are approximate measurements only and are subject to government re-survey. The balcony shall not be enclosed unless with the approved balcony screen. For an illustration of the approved balcony screen, please refer to the diagram annexed hereto as "Annexure A".



Keyplan is not drawn to scale

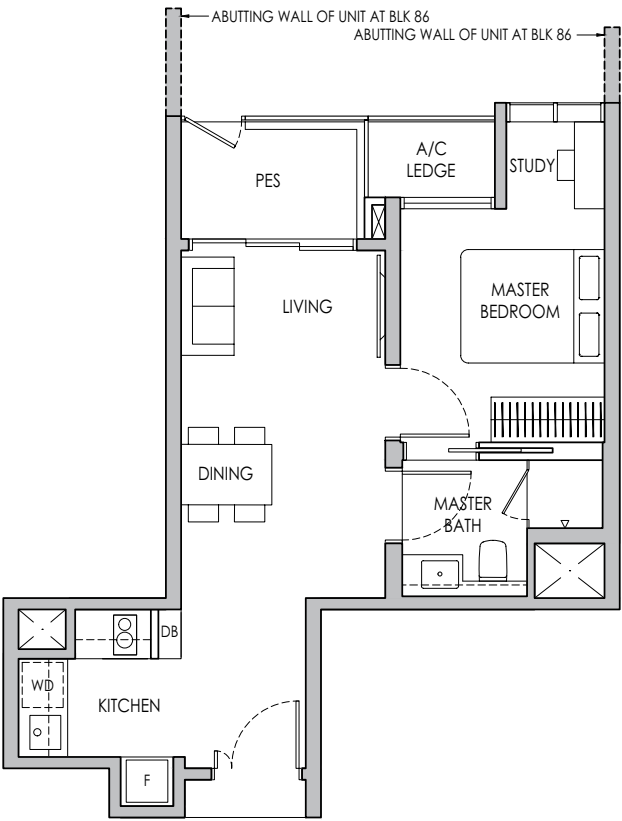


1-BEDROOM + STUDY

Type A2S(p)

46 sq m / 495 sq ft

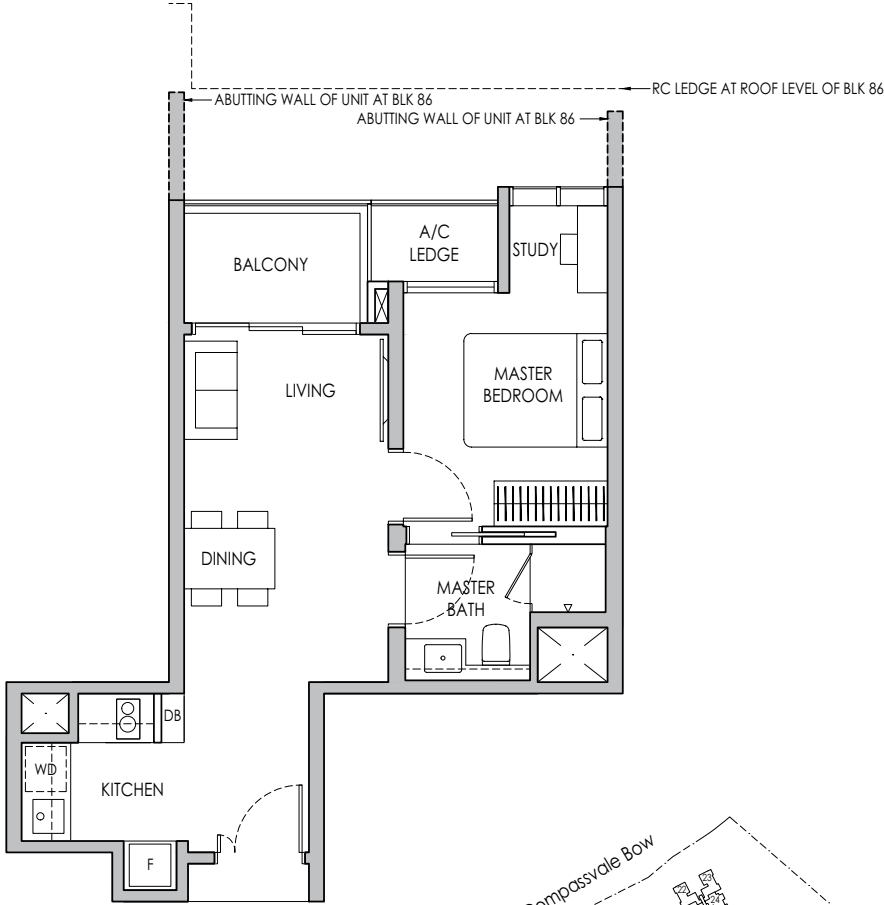
BLK 86: #04-63



Type A2S

46 sq m / 495 sq ft

BLK 86: #05-63 - #13-63



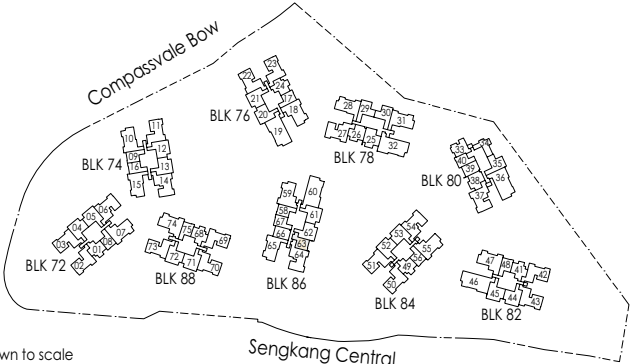
* Mirror Image



Area includes air-con (A/C) ledge, private enclosed space (PES), balcony and strata void area where applicable. Some units are mirror images of the apartment plans shown in the brochure. Please refer to the keyplan for orientation. The plans are subject to change as may be approved by relevant authorities. All floor plans are approximate measurements only and are subject to government re-survey. The balcony shall not be enclosed unless with the approved balcony screen. For an illustration of the approved balcony screen, please refer to the diagram annexed hereto as "Annexure A".



Keyplan is not drawn to scale



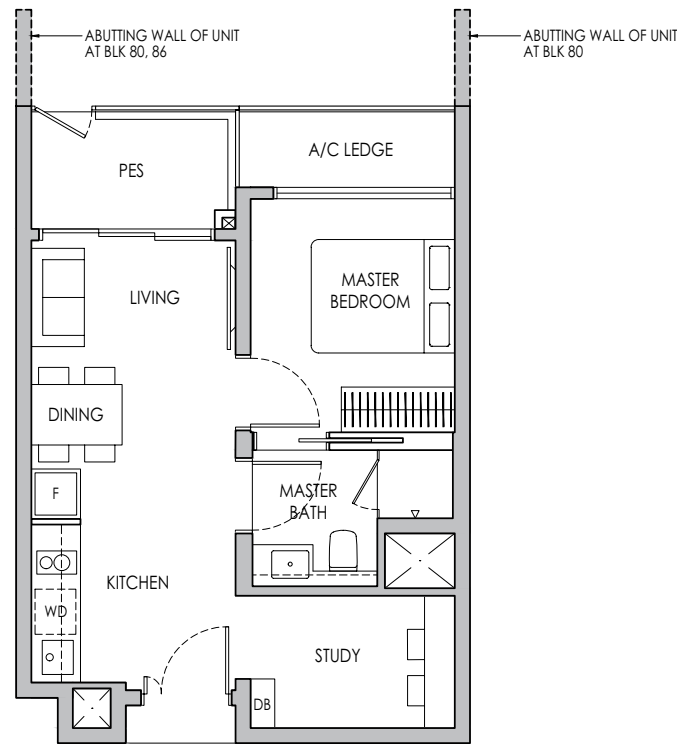
1-BEDROOM + STUDY

Type A3S(p)

47 sq m / 506 sq ft

BLK 80 #04-39

BLK 86 #04-66*

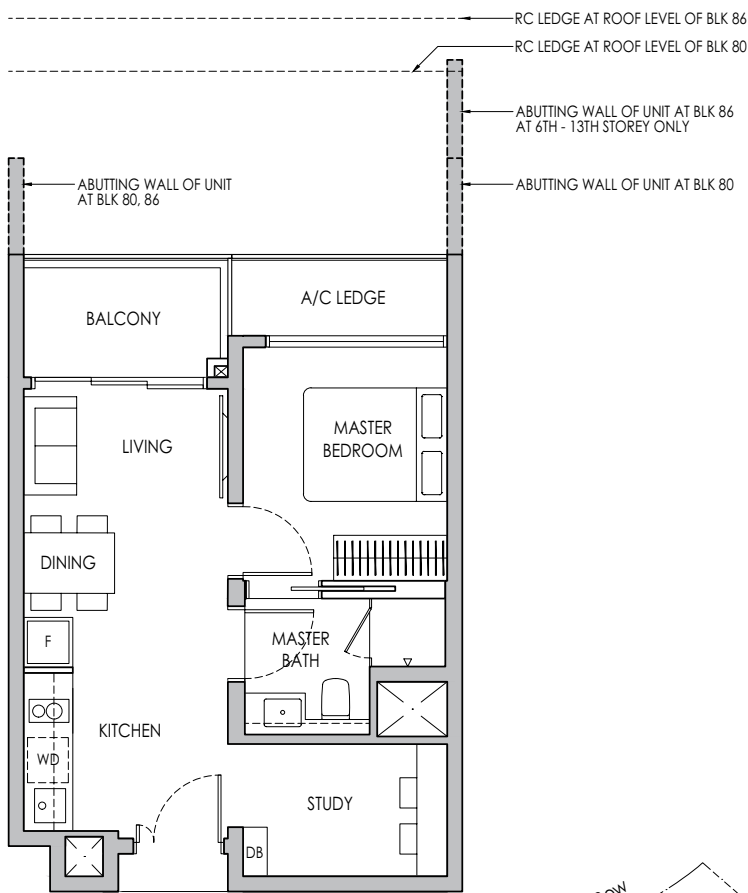


Type A3S

47 sq m / 506 sq ft

BLK 80 #05-39 - #13-39

BLK 86 #05-66* - #13-66*



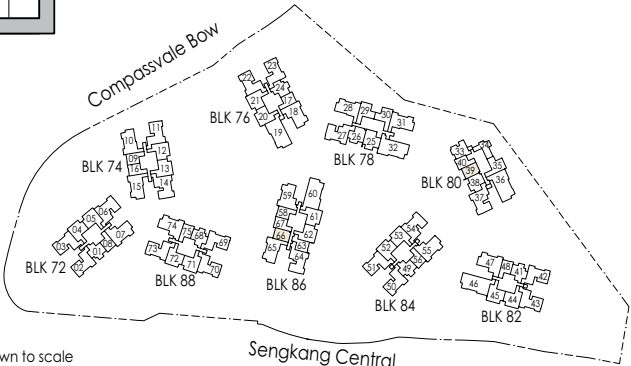
* Mirror Image



Area includes air-con (A/C) ledge, private enclosed space (PES), balcony and strata void area where applicable. Some units are mirror images of the apartment plans shown in the brochure. Please refer to the keyplan for orientation. The plans are subject to change as may be approved by relevant authorities. All floor plans are approximate measurements only and are subject to government re-survey. The balcony shall not be enclosed unless with the approved balcony screen. For an illustration of the approved balcony screen, please refer to the diagram annexed hereto as "Annexure A".



Keyplan is not drawn to scale

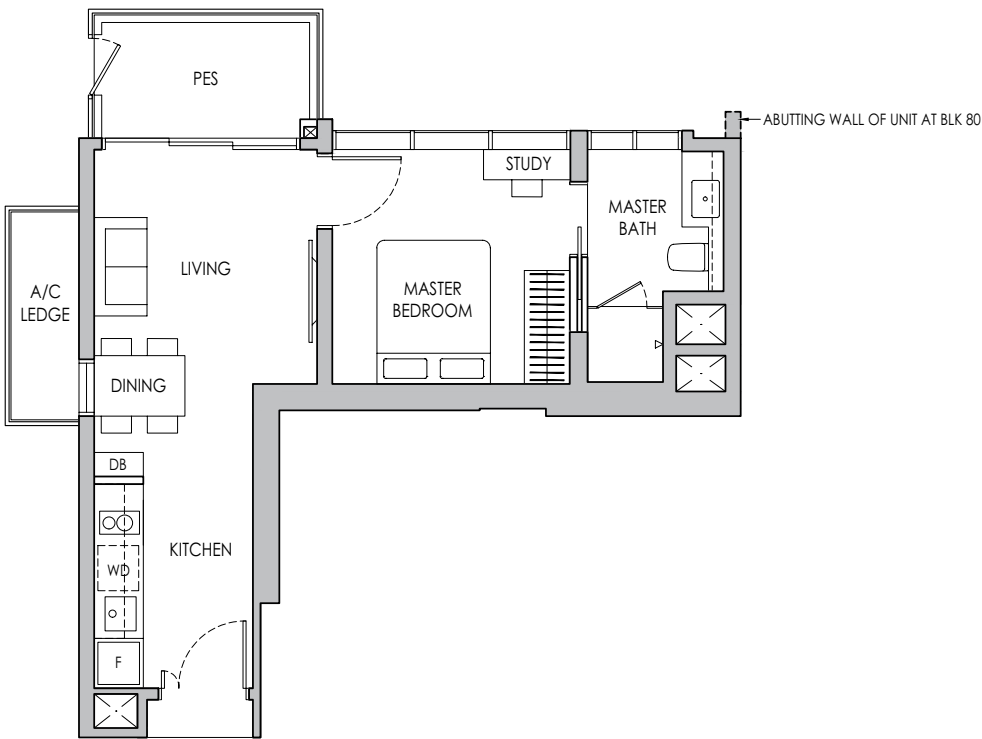


1-BEDROOM + STUDY

Type A4S(p)

47 sq m / 506 sq ft

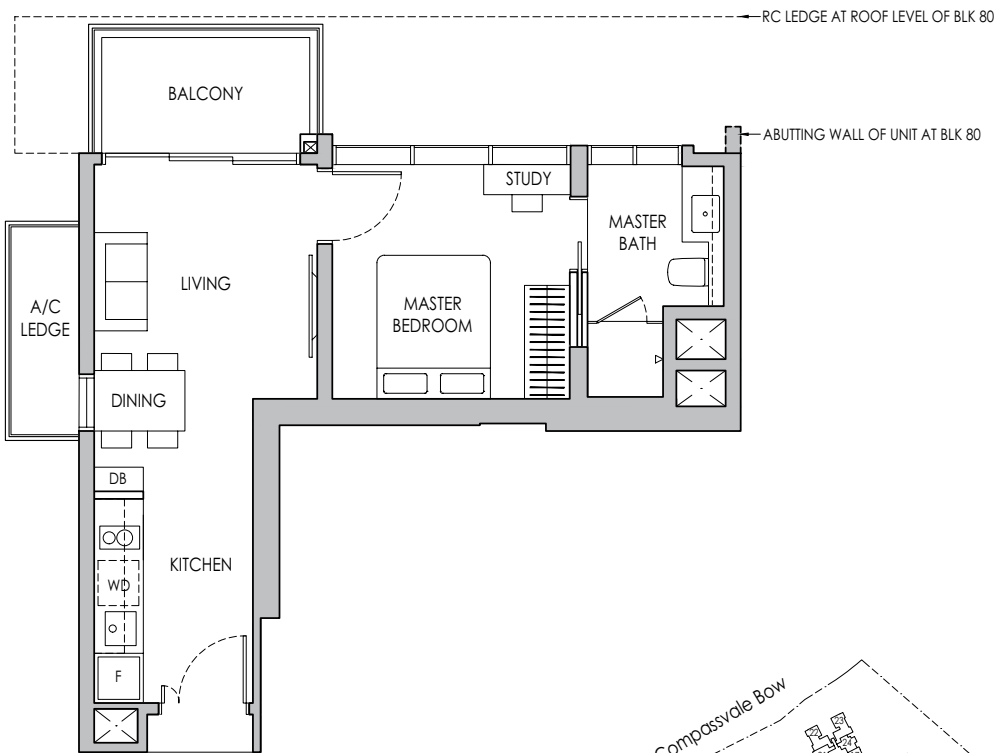
BLK 80 #04-34



Type A4S

47 sq m / 506 sq ft

BLK 80 #05-34 - #13-34



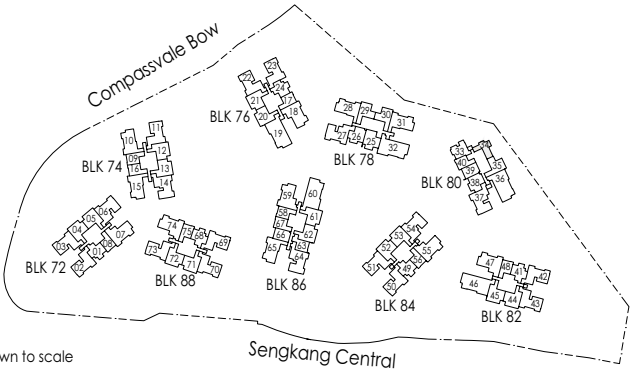
* Mirror Image



Area includes air-con (A/C) ledge, private enclosed space (PES), balcony and strata void area where applicable. Some units are mirror images of the apartment plans shown in the brochure. Please refer to the keyplan for orientation. The plans are subject to change as may be approved by relevant authorities. All floor plans are approximate measurements only and are subject to government re-survey. The balcony shall not be enclosed unless with the approved balcony screen. For an illustration of the approved balcony screen, please refer to the diagram annexed hereto as "Annexure A".



Keyplan is not drawn to scale

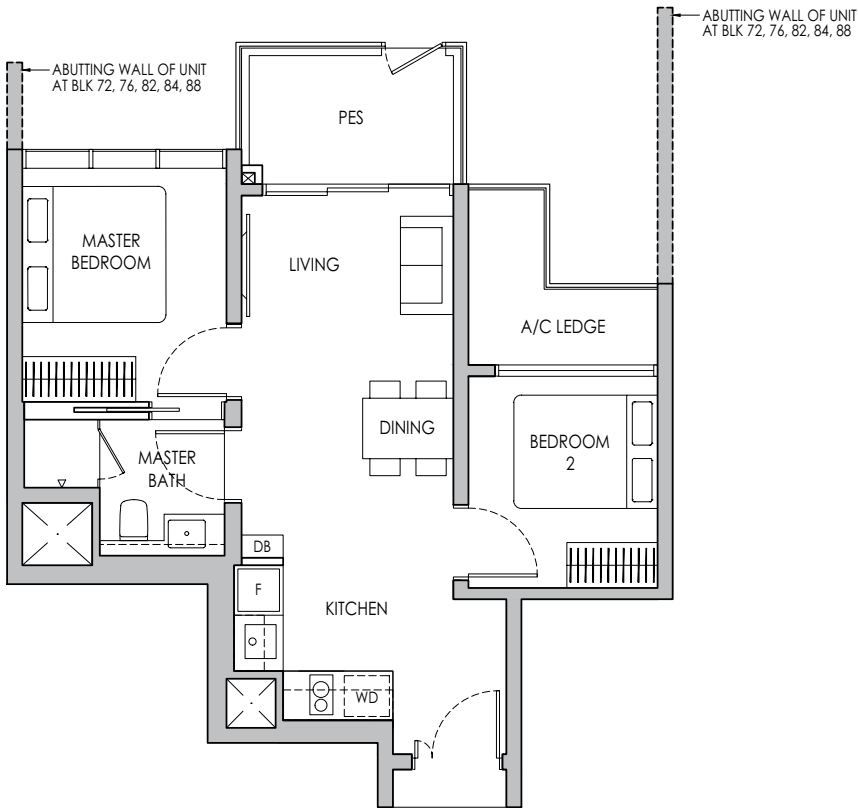


2-BEDROOM

Type B1(p)

58 sq m / 624 sq ft

- BLK 72 #04-01
- BLK 76 #04-24*
- BLK 82 #04-41
- BLK 84 #04-49
- BLK 88 #04-68

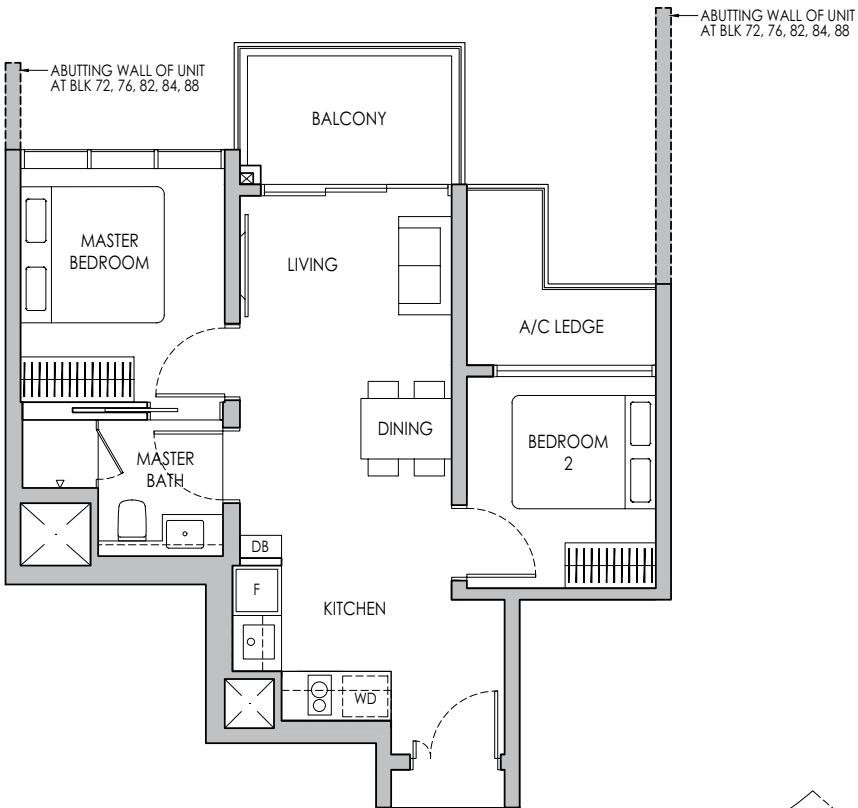


RC LEDGE AT ROOF LEVEL OF BLK 84
RC LEDGE AT ROOF LEVEL OF BLK 82
RC LEDGE AT ROOF LEVEL OF BLK 72, 76, 88

Type B1

58 sq m / 624 sq ft

- BLK 72 #05-01 - #11-01
- BLK 76 #05-24* - #12-24*
- BLK 82 #05-41 - #13-41
- BLK 84 #05-49 - #13-49
- BLK 88 #05-68 - #11-68



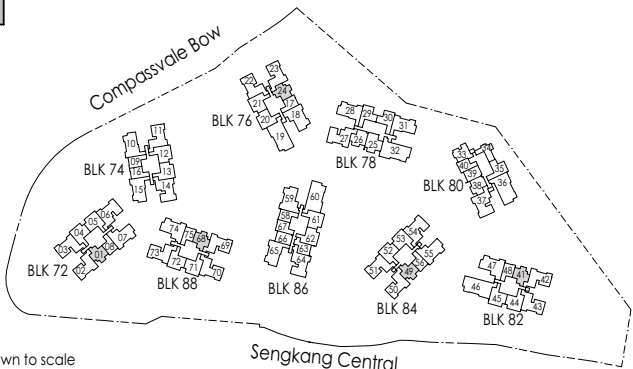
* Mirror Image



Area includes air-con (A/C) ledge, private enclosed space (PES), balcony and strata void area where applicable. Some units are mirror images of the apartment plans shown in the brochure. Please refer to the keyplan for orientation. The plans are subject to change as may be approved by relevant authorities. All floor plans are approximate measurements only and are subject to government re-survey. The balcony shall not be enclosed unless with the approved balcony screen. For an illustration of the approved balcony screen, please refer to the diagram annexed hereto as "Annexure A".



Keyplan is not drawn to scale

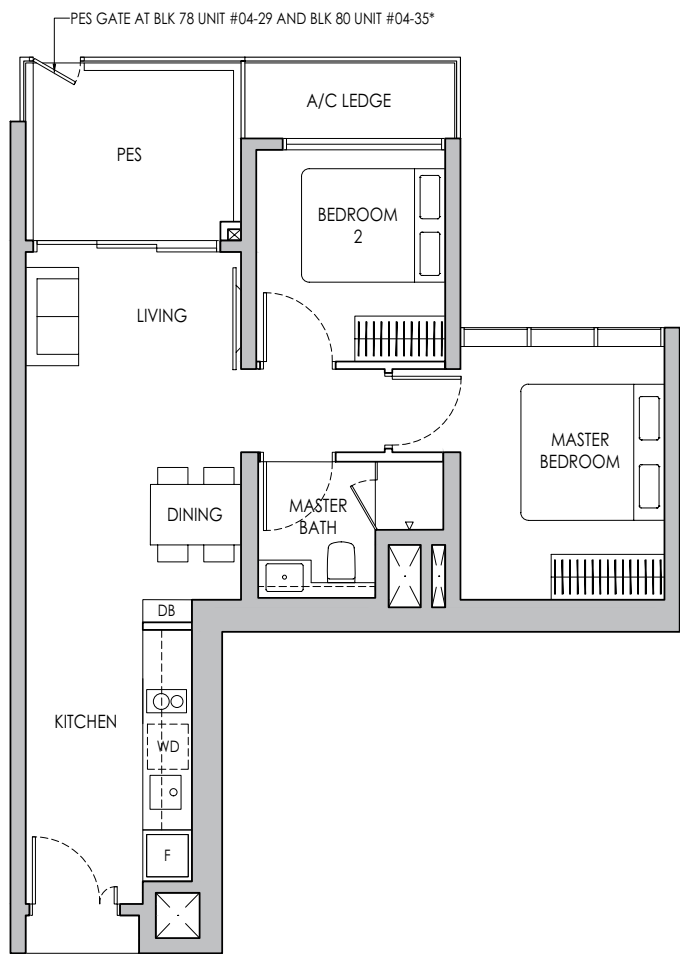
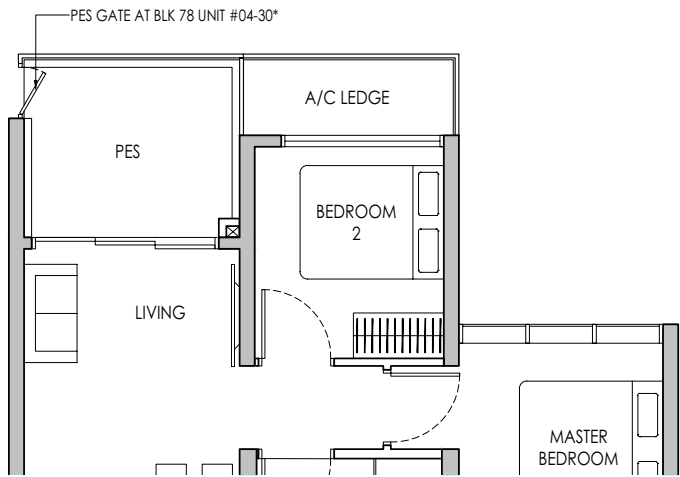


2-BEDROOM

Type B2(p)

63 sq m / 678 sq ft

BLK 78 #04-29 / #04-30*
BLK 80 #04-35*



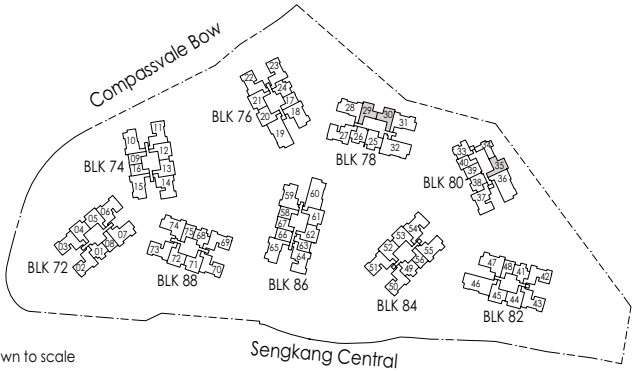
* Mirror Image



Area includes air-con (A/C) ledge, private enclosed space (PES), balcony and strata void area where applicable. Some units are mirror images of the apartment plans shown in the brochure. Please refer to the keyplan for orientation. The plans are subject to change as may be approved by relevant authorities. All floor plans are approximate measurements only and are subject to government re-survey. The balcony shall not be enclosed unless with the approved balcony screen. For an illustration of the approved balcony screen, please refer to the diagram annexed hereto as "Annexure A".



Keyplan is not drawn to scale

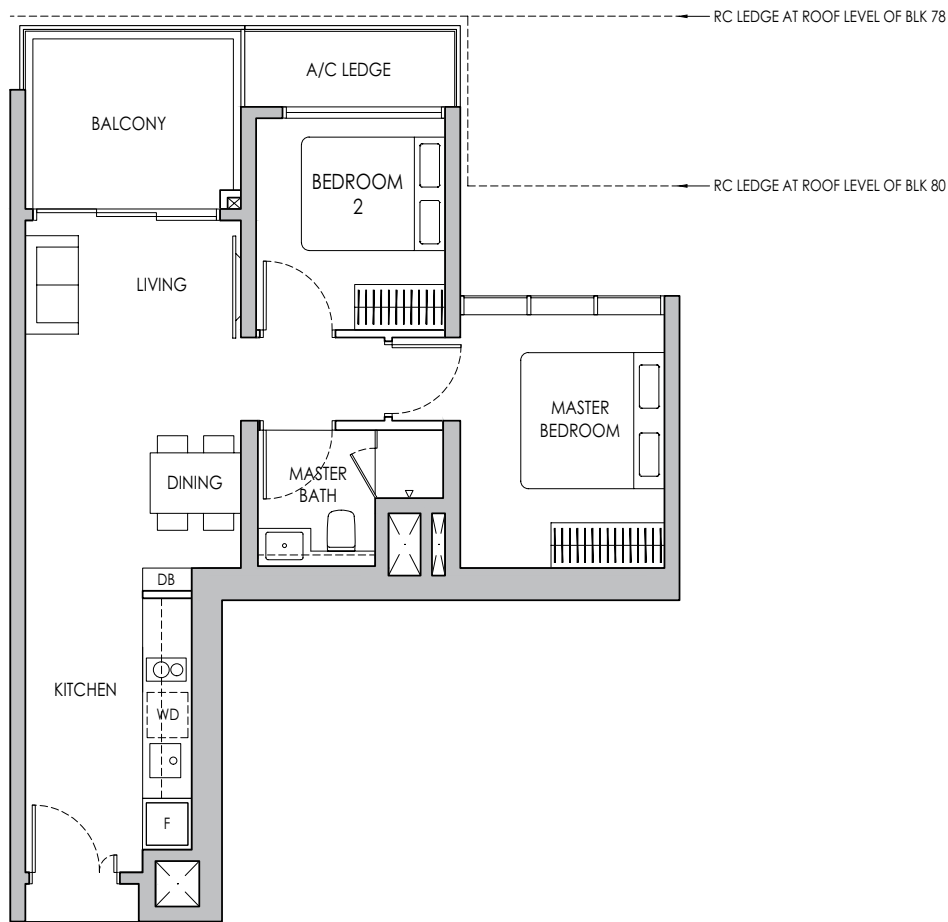


2-BEDROOM

Type B2

63 sq m / 678 sq ft

BLK 78 #05-29 - #13-29, #05-30* - #13-30*
BLK 80 #05-35* - #13-35*



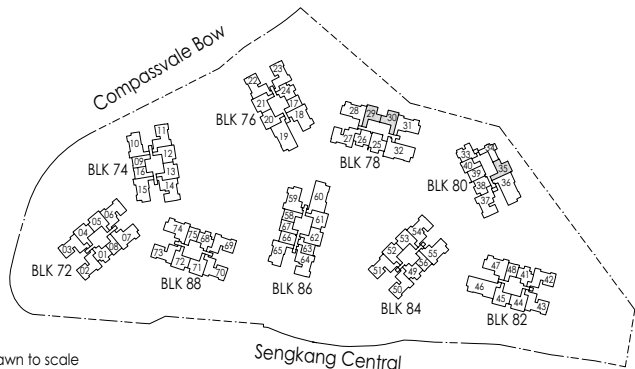
* Mirror Image



Area includes air-con (A/C) ledge, private enclosed space (PES), balcony and strata void area where applicable. Some units are mirror images of the apartment plans shown in the brochure. Please refer to the keyplan for orientation. The plans are subject to change as may be approved by relevant authorities. All floor plans are approximate measurements only and are subject to government re-survey. The balcony shall not be enclosed unless with the approved balcony screen. For an illustration of the approved balcony screen, please refer to the diagram annexed hereto as "Annexure A".



Keyplan is not drawn to scale



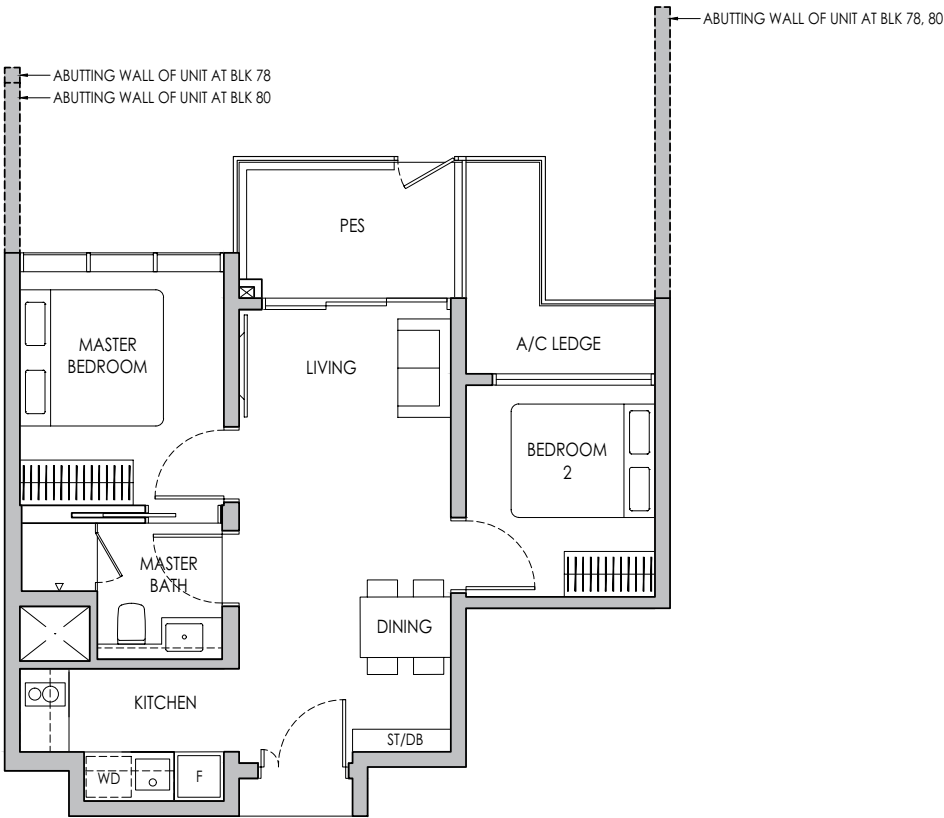
2-BEDROOM

Type B3(p)

58 sq m / 624 sq ft

BLK 78 #04-26

BLK 80 #04-38*

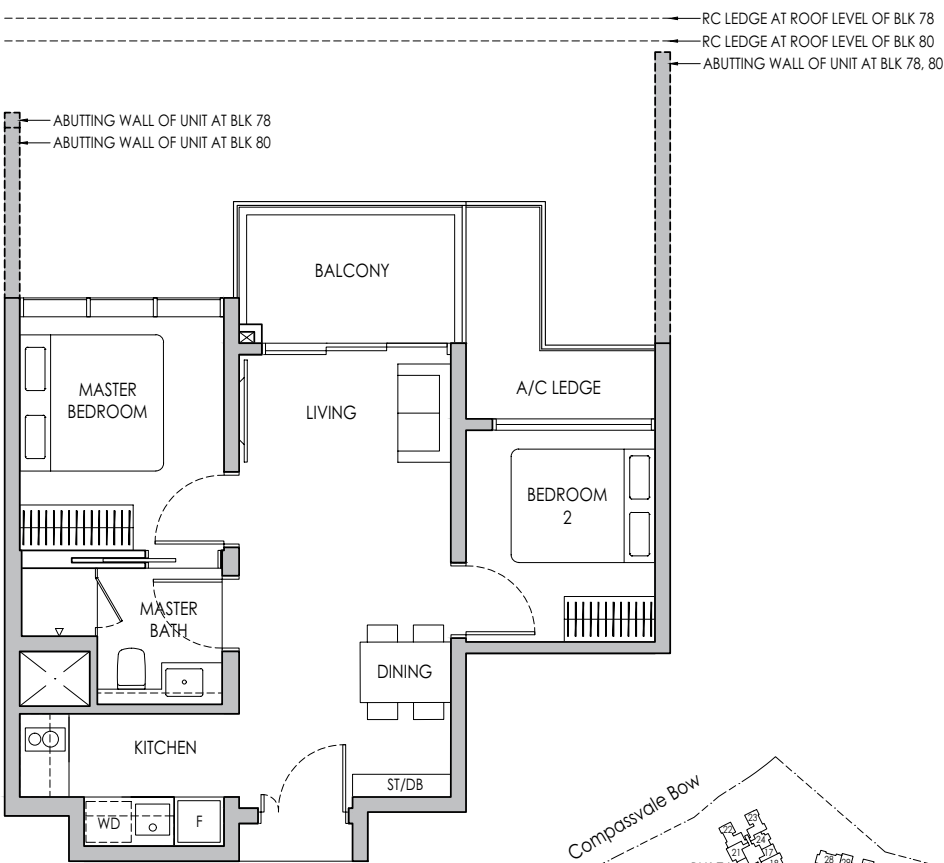


Type B3

58 sq m / 624 sq ft

BLK 78 #05-26 - #13-26

BLK 80 #05-38* - #13-38*



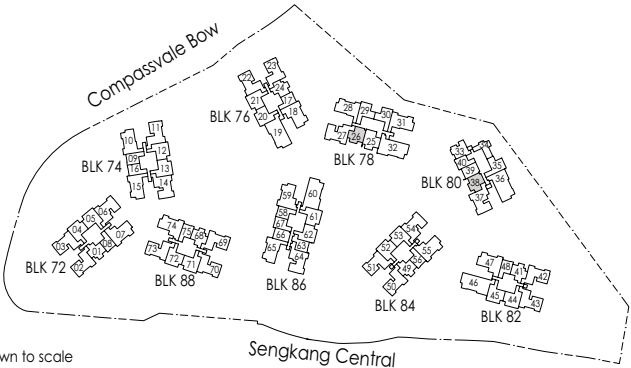
* Mirror Image



Area includes air-con (A/C) ledge, private enclosed space (PES), balcony and strata void area where applicable. Some units are mirror images of the apartment plans shown in the brochure. Please refer to the keyplan for orientation. The plans are subject to change as may be approved by relevant authorities. All floor plans are approximate measurements only and are subject to government re-survey. The balcony shall not be enclosed unless with the approved balcony screen. For an illustration of the approved balcony screen, please refer to the diagram annexed hereto as "Annexure A".



Keyplan is not drawn to scale

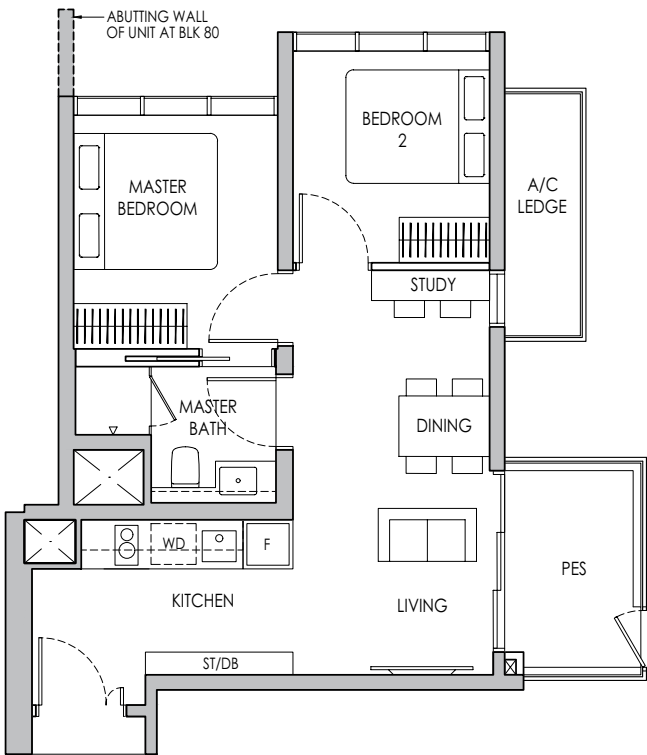


2-BEDROOM + STUDY

Type B4S(p)

58 sq m / 624 sq ft

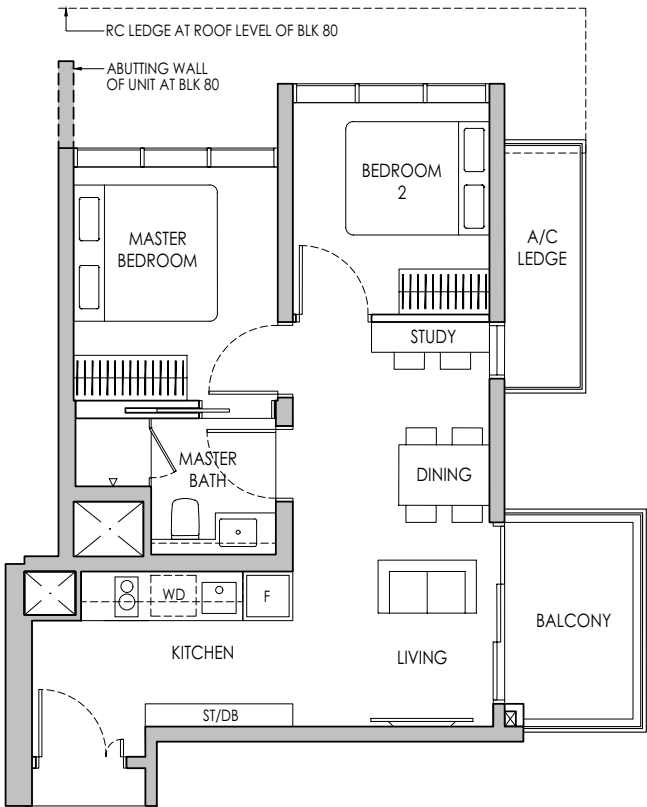
BLK 80 #04-33



Type B4S

58 sq m / 624 sq ft

BLK 80 #05-33 - #13-33



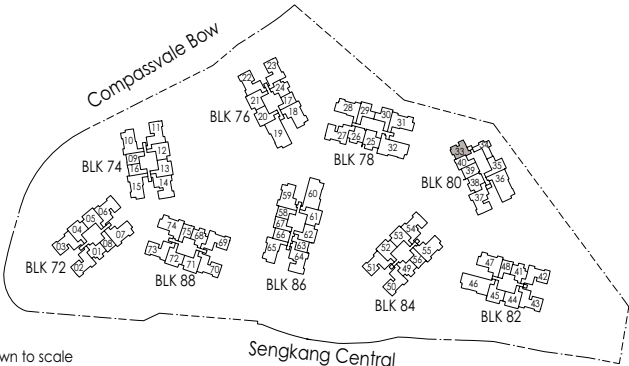
* Mirror Image



Area includes air-con (A/C) ledge, private enclosed space (PES), balcony and strata void area where applicable. Some units are mirror images of the apartment plans shown in the brochure. Please refer to the keyplan for orientation. The plans are subject to change as may be approved by relevant authorities. All floor plans are approximate measurements only and are subject to government re-survey. The balcony shall not be enclosed unless with the approved balcony screen. For an illustration of the approved balcony screen, please refer to the diagram annexed hereto as "Annexure A".



Keyplan is not drawn to scale

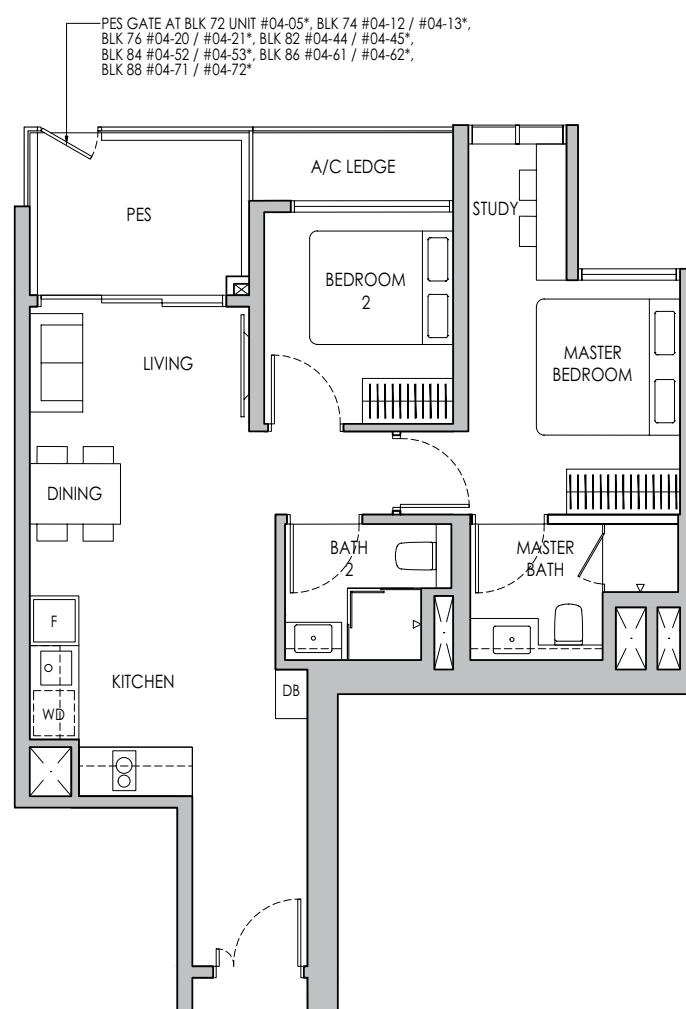
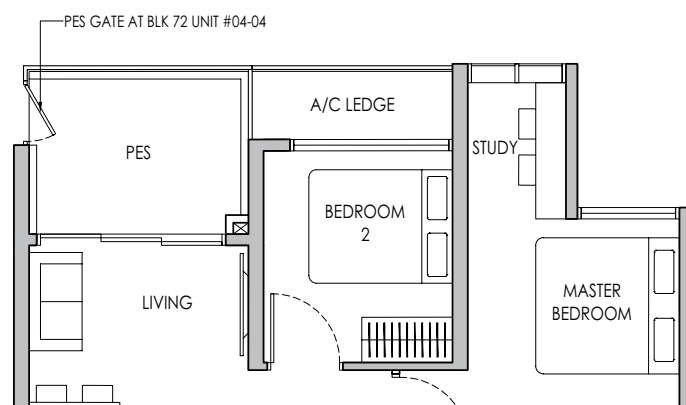


2-BEDROOM PREMIUM + STUDY

Type B5PS(p)

71 sq m / 764 sq ft

BLK 72 #04-04, #04-05*
BLK 74 #04-12, #04-13*
BLK 76 #04-20, #04-21*
BLK 82 #04-44, #04-45*
BLK 84 #04-52, #04-53*
BLK 86 #04-61, #04-62*
BLK 88 #04-71, #04-72*



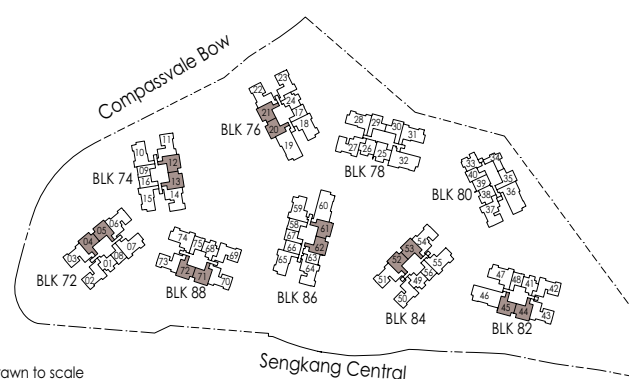
* Mirror Image



Area includes air-con (A/C) ledge, private enclosed space (PES), balcony and strata void area where applicable. Some units are mirror images of the apartment plans shown in the brochure. Please refer to the keyplan for orientation. The plans are subject to change as may be approved by relevant authorities. All floor plans are approximate measurements only and are subject to government re-survey. The balcony shall not be enclosed unless with the approved balcony screen. For an illustration of the approved balcony screen, please refer to the diagram annexed hereto as "Annexure A".



Keyplan is not drawn to scale

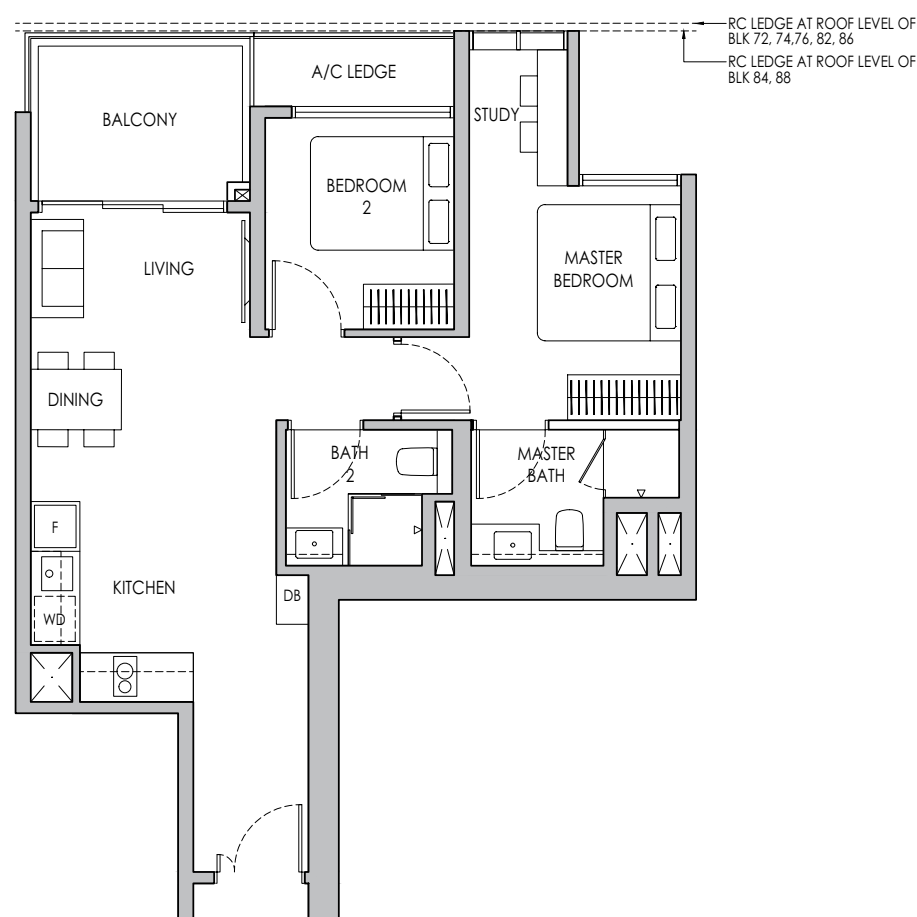


2-BEDROOM PREMIUM + STUDY

Type B5PS

71 sq m / 764 sq ft

BLK 72 #05-04 - #11-04, #05-05* - #11-05*
BLK 74 #05-12 - #11-12, #05-13* - #11-13*
BLK 76 #05-20 - #12-20, #05-21* - #12-21*
BLK 82 #05-44 - #13-44, #05-45* - #13-45*
BLK 84 #05-52 - #13-52, #05-53* - #13-53*
BLK 86 #05-61 - #13-61, #05-62* - #13-62*
BLK 88 #05-71 - #11-71, #05-72* - #11-72*



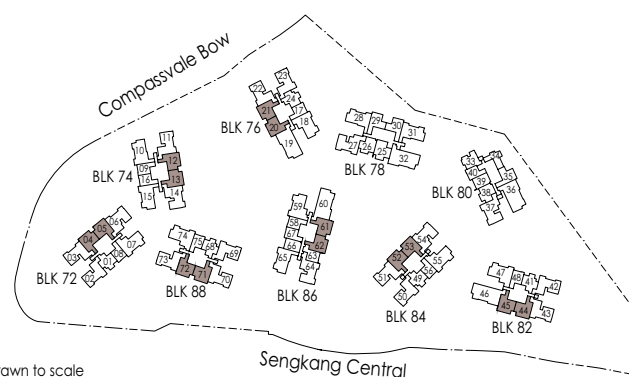
* Mirror Image

0 1 2 5m

Area includes air-con (A/C) ledge, private enclosed space (PES), balcony and strata void area where applicable. Some units are mirror images of the apartment plans shown in the brochure. Please refer to the keyplan for orientation. The plans are subject to change as may be approved by relevant authorities. All floor plans are approximate measurements only and are subject to government re-survey. The balcony shall not be enclosed unless with the approved balcony screen. For an illustration of the approved balcony screen, please refer to the diagram annexed hereto as "Annexure A".



Keyplan is not drawn to scale

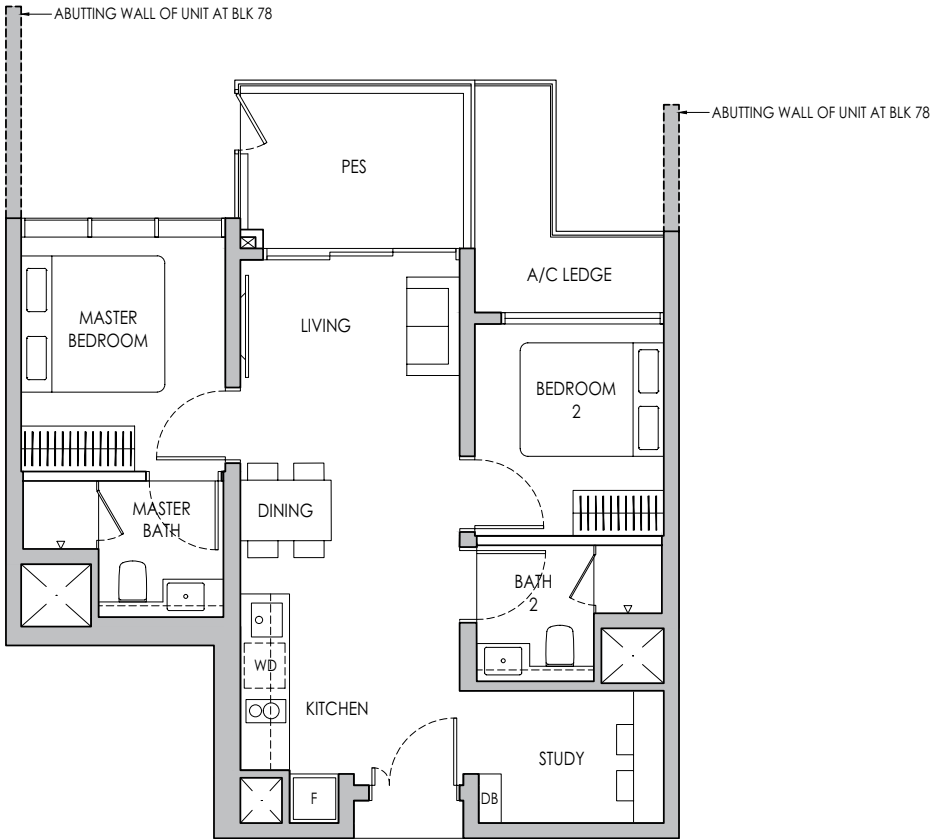


2-BEDROOM PREMIUM + STUDY

Type B6PS(p)

68 sq m / 732 sq ft

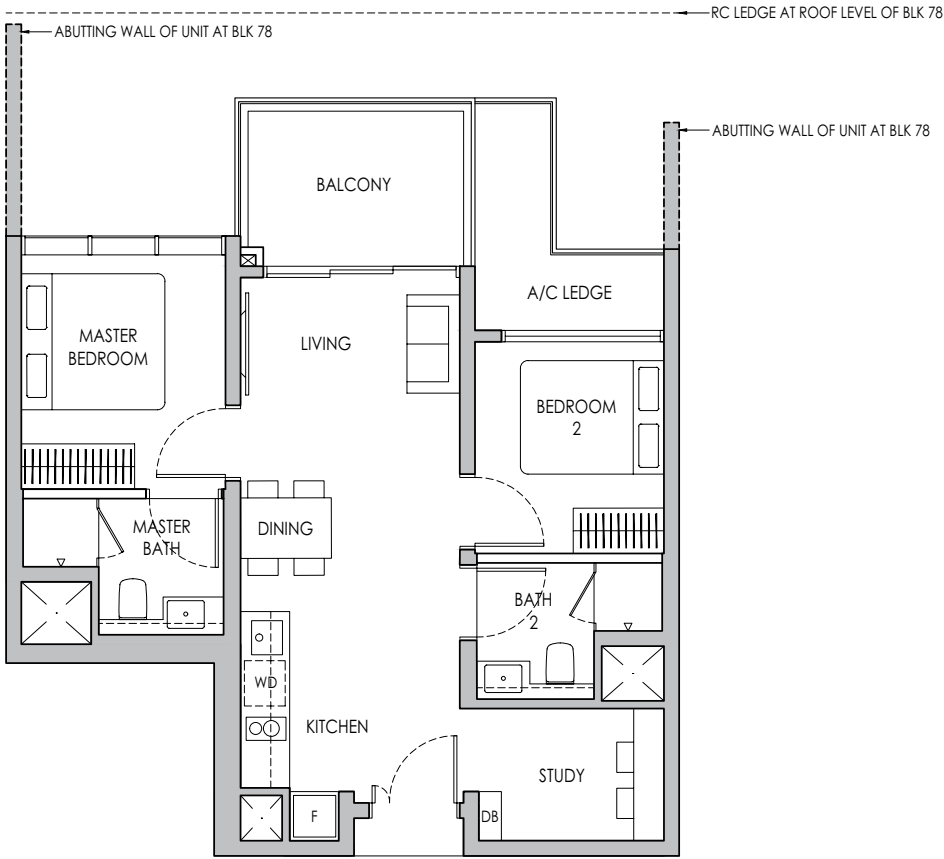
BLK 78 #04-25



Type B6PS

68 sq m / 732 sq ft

BLK 78 #05-25 - #13-25



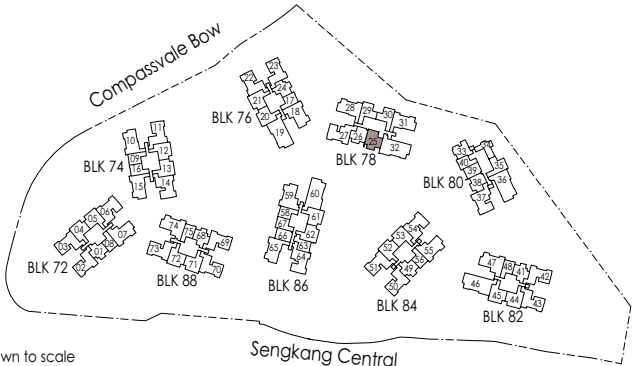
* Mirror Image



Area includes air-con (A/C) ledge, private enclosed space (PES), balcony and strata void area where applicable. Some units are mirror images of the apartment plans shown in the brochure. Please refer to the keyplan for orientation. The plans are subject to change as may be approved by relevant authorities. All floor plans are approximate measurements only and are subject to government re-survey. The balcony shall not be enclosed unless with the approved balcony screen. For an illustration of the approved balcony screen, please refer to the diagram annexed hereto as "Annexure A".



Keyplan is not drawn to scale

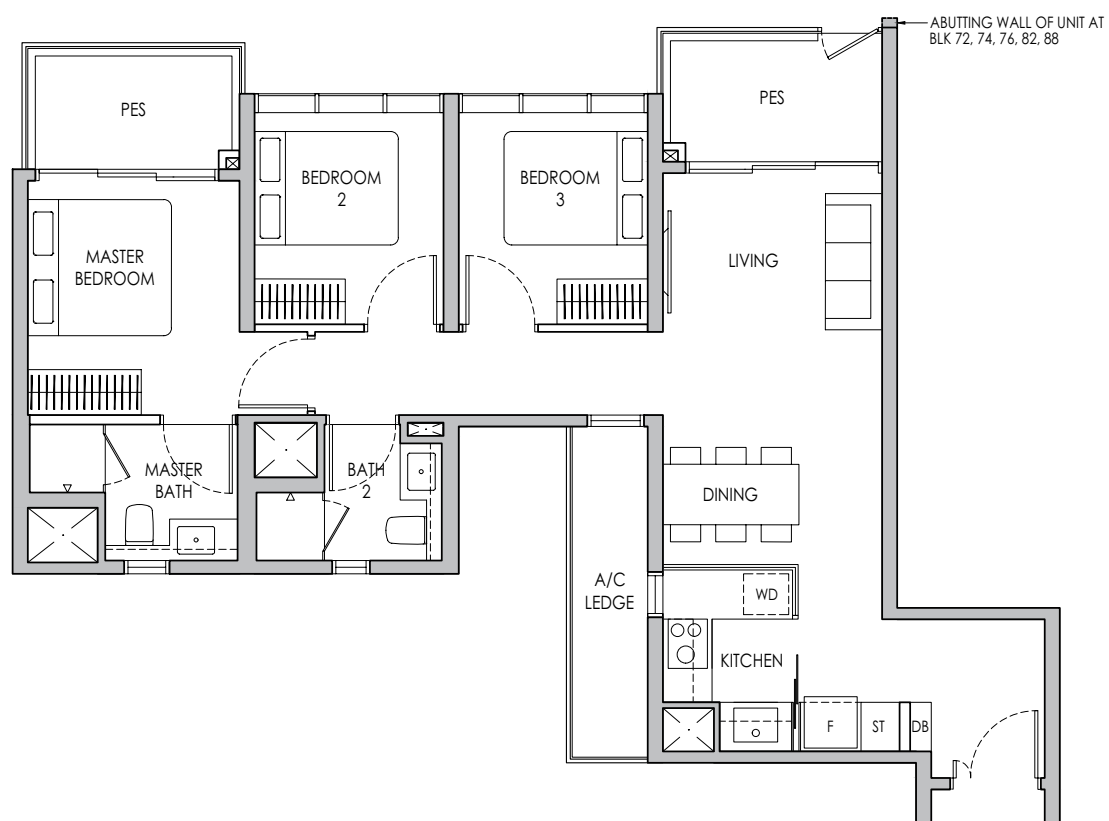


3-BEDROOM

Type C1(p)

87 sq m / 936 sq ft

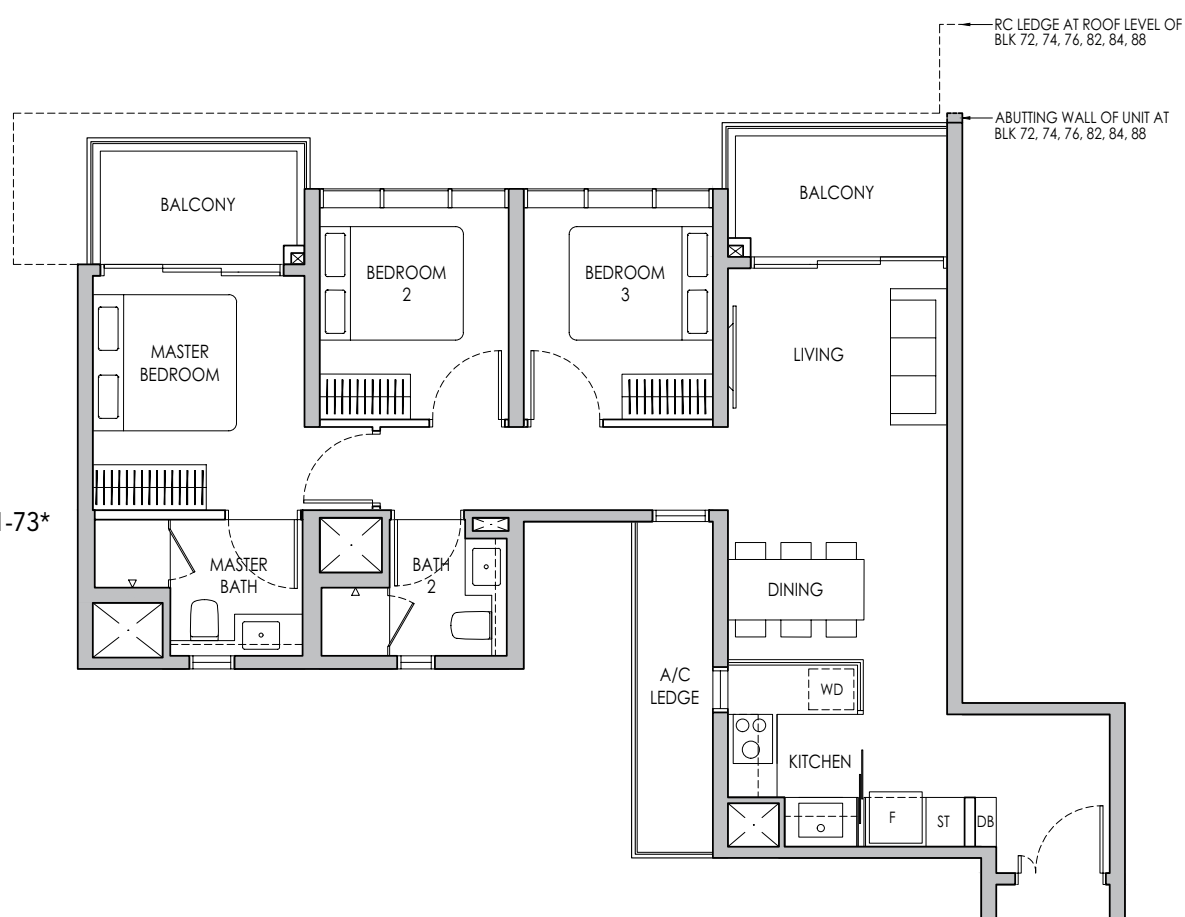
BLK 72 #04-03
BLK 74 #04-11
BLK 76 #04-22*
BLK 82 #04-43
BLK 88 #04-70, #04-73*



Type C1

87 sq m / 936 sq ft

BLK 72 #05-03 - #11-03
BLK 74 #05-11 - #11-11
BLK 76 #05-22* - #12-22*
BLK 82 #05-43 - #13-43
BLK 84 #06-51 - #13-51
BLK 88 #05-70 - #11-70, #05-73* - #11-73*



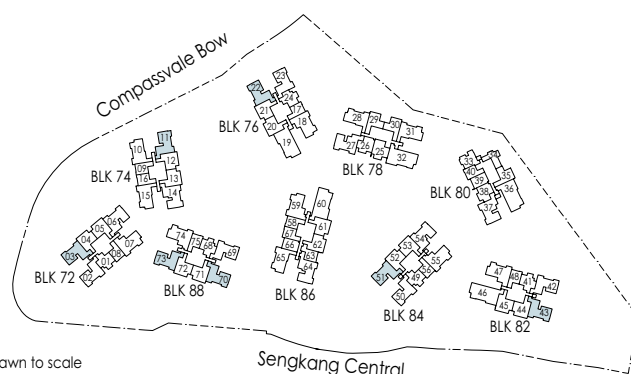
* Mirror Image



Area includes air-con (A/C) ledge, private enclosed space (PES), balcony and strata void area where applicable. Some units are mirror images of the apartment plans shown in the brochure. Please refer to the keyplan for orientation. The plans are subject to change as may be approved by relevant authorities. All floor plans are approximate measurements only and are subject to government re-survey. The balcony shall not be enclosed unless with the approved balcony screen. For an illustration of the approved balcony screen, please refer to the diagram annexed hereto as "Annexure A".



Keyplan is not drawn to scale

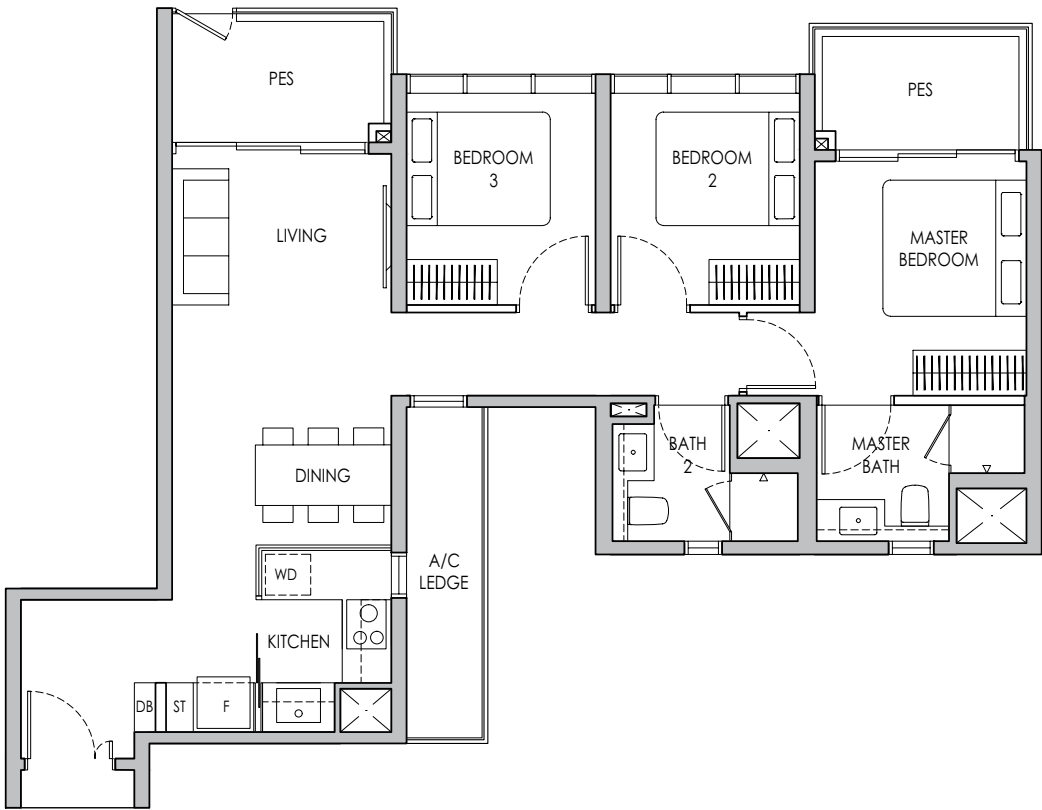


3-BEDROOM

Type C1a(p)

87 sq m / 936 sq ft

- BLK 72 #04-02
- BLK 76 #04-23*
- BLK 82 #04-42
- BLK 84 #04-50
- BLK 88 #04-69

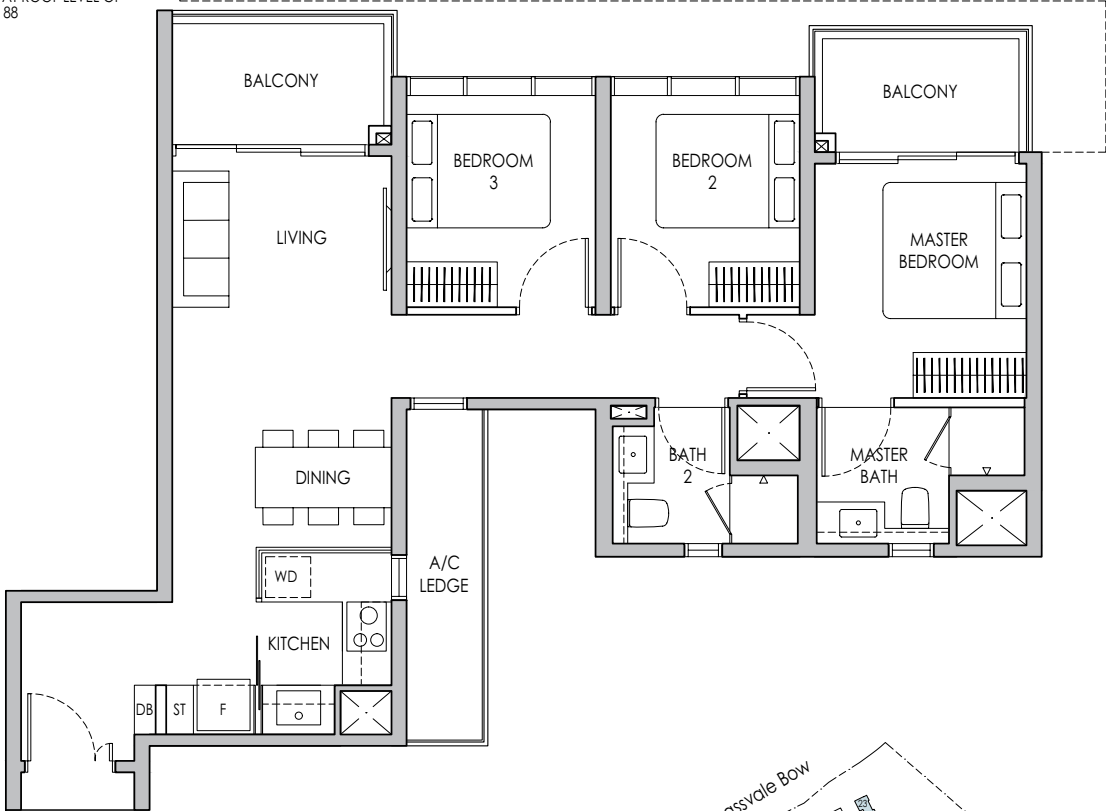


Type C1a

87 sq m / 936 sq ft

- BLK 72 #05-02 - #11-02
- BLK 76 #05-23* - #12-23*
- BLK 82 #05-42 - #13-42
- BLK 84 #05-50 - #13-50
- BLK 88 #05-69 - #11-69

RC LEDGE AT ROOF LEVEL OF BLK 84
RC LEDGE AT ROOF LEVEL OF BLK 82
RC LEDGE AT ROOF LEVEL OF BLK 72, 76, 88



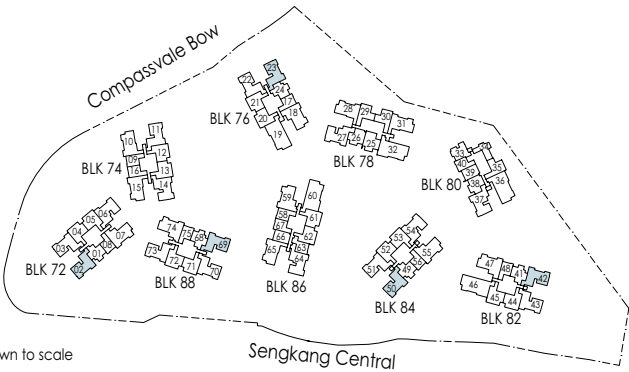
* Mirror Image



Area includes air-con (A/C) ledge, private enclosed space (PES), balcony and strata void area where applicable. Some units are mirror images of the apartment plans shown in the brochure. Please refer to the keyplan for orientation. The plans are subject to change as may be approved by relevant authorities. All floor plans are approximate measurements only and are subject to government re-survey. The balcony shall not be enclosed unless with the approved balcony screen. For an illustration of the approved balcony screen, please refer to the diagram annexed hereto as "Annexure A".



Keyplan is not drawn to scale

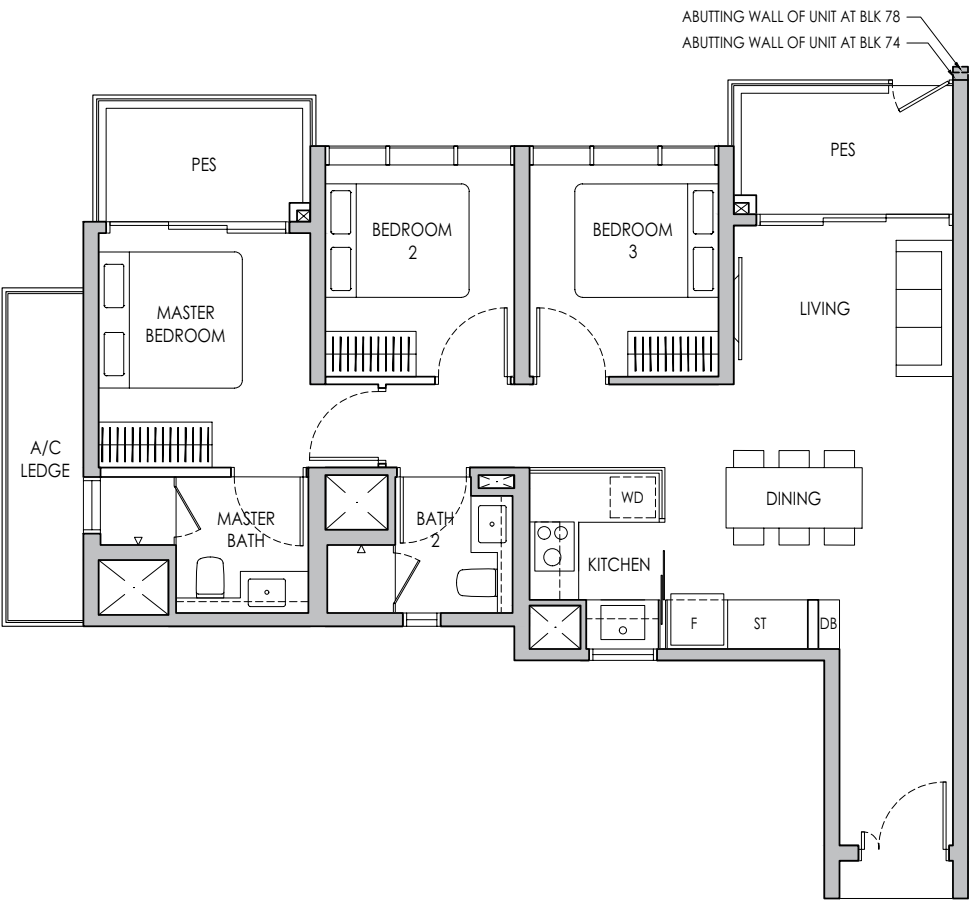


3-BEDROOM

Type C2(p)

87 sq m / 936 sq ft

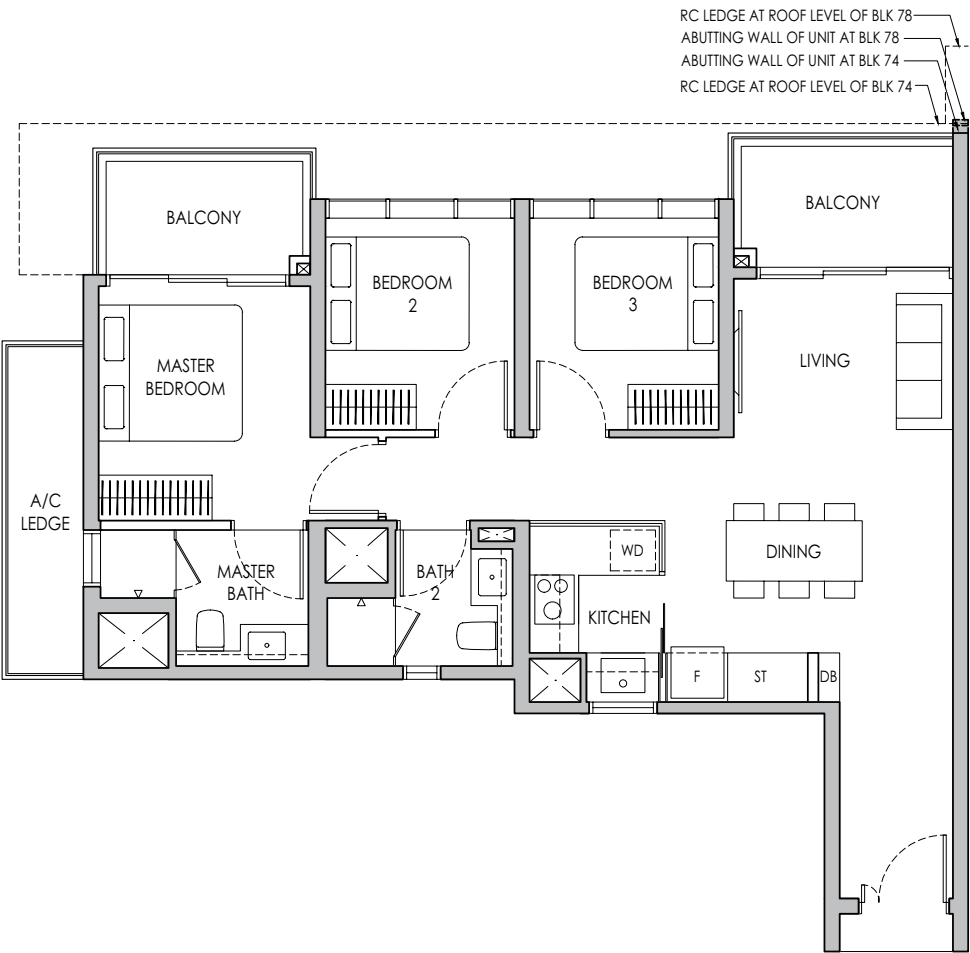
BLK 74 #04-10*, #04-15
BLK 78 #04-28, #04-31*



Type C2

87 sq m / 936 sq ft

BLK 74 #05-10* - #11-10*, #05-15 - #11-15
BLK 78 #05-28 - #13-28, #05-31* - #13-31*



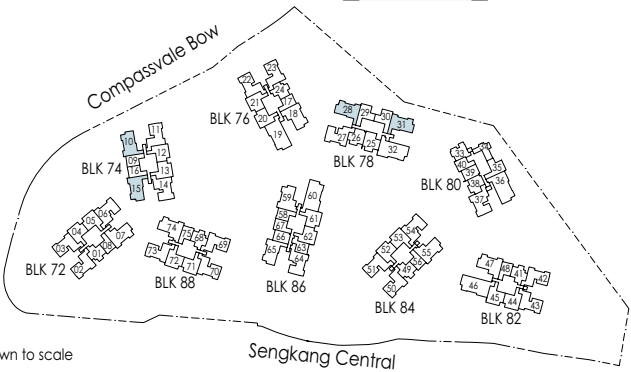
* Mirror Image



Area includes air-con (A/C) ledge, private enclosed space (PES), balcony and strata void area where applicable. Some units are mirror images of the apartment plans shown in the brochure. Please refer to the keyplan for orientation. The plans are subject to change as may be approved by relevant authorities. All floor plans are approximate measurements only and are subject to government re-survey. The balcony shall not be enclosed unless with the approved balcony screen. For an illustration of the approved balcony screen, please refer to the diagram annexed hereto as "Annexure A".



Keyplan is not drawn to scale

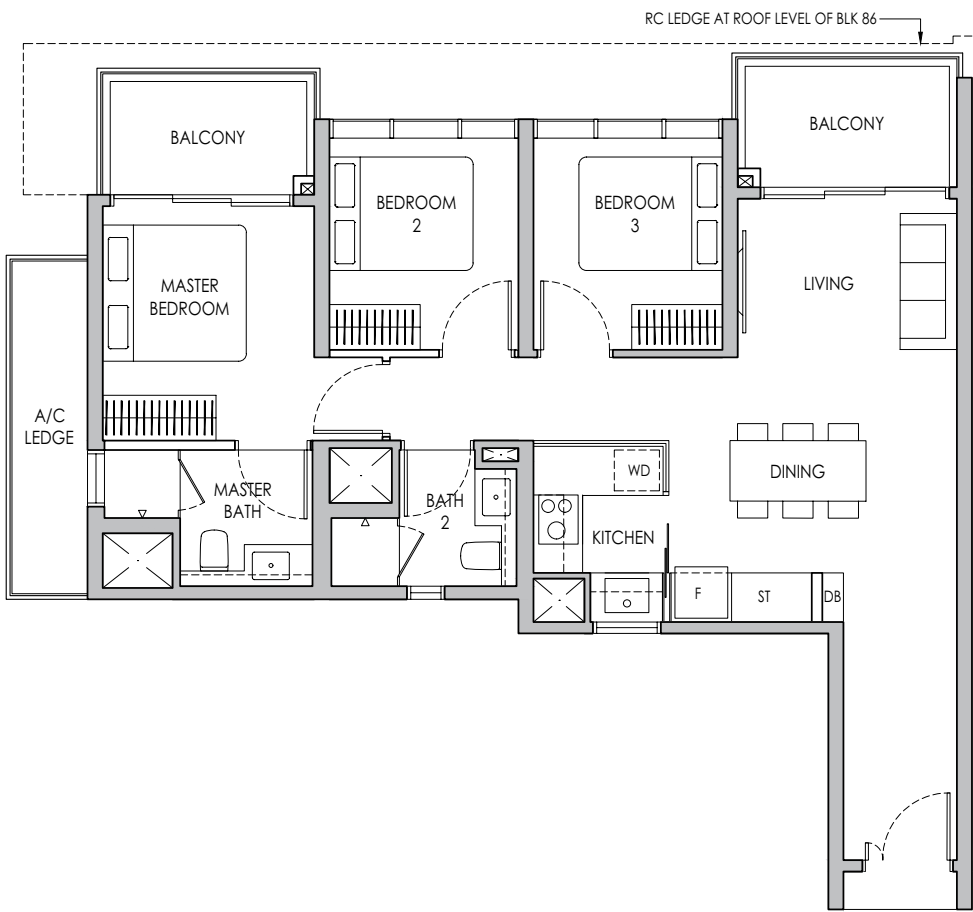


3-BEDROOM

Type C2a

88 sq m / 947 sq ft

BLK 86 #06-65 - #13-65



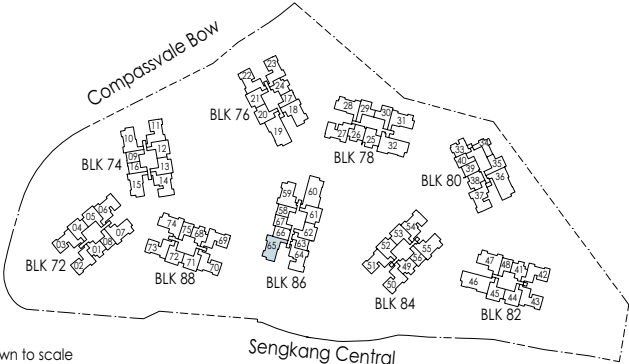
* Mirror Image



Area includes air-con (A/C) ledge, private enclosed space (PES), balcony and strata void area where applicable. Some units are mirror images of the apartment plans shown in the brochure. Please refer to the keyplan for orientation. The plans are subject to change as may be approved by relevant authorities. All floor plans are approximate measurements only and are subject to government re-survey. The balcony shall not be enclosed unless with the approved balcony screen. For an illustration of the approved balcony screen, please refer to the diagram annexed hereto as "Annexure A".



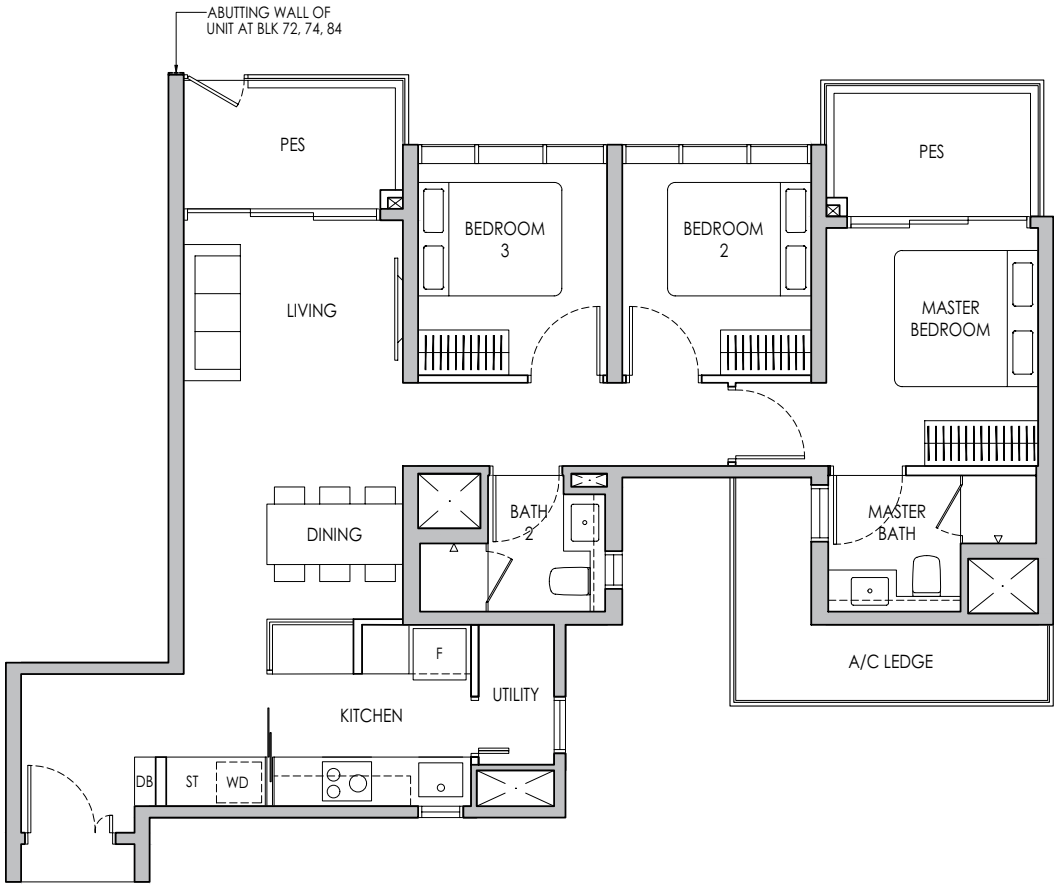
Keyplan is not drawn to scale



3-BEDROOM PREMIUM

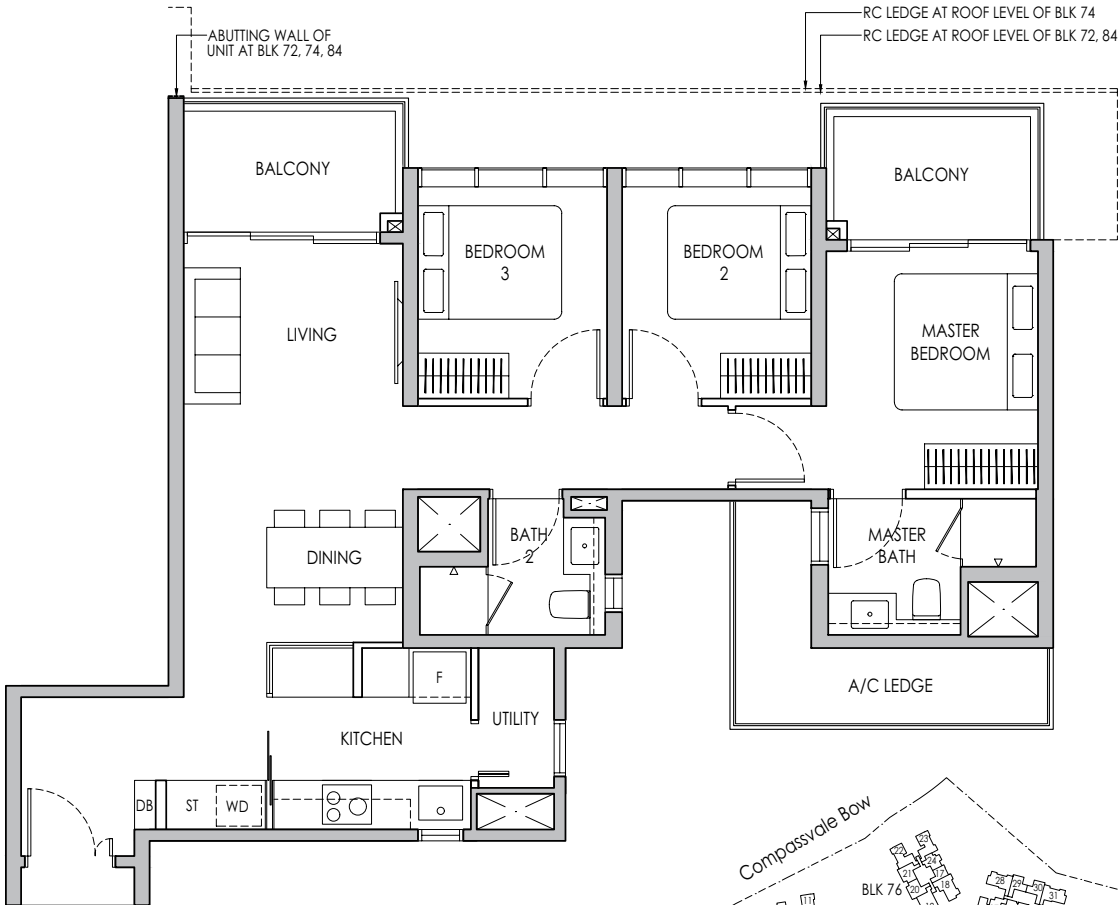
Type C3P(p)
95 sq m / 1023 sq ft

- BLK 72 #04-06
- BLK 74 #04-14
- BLK 84 #04-54



Type C3P
95 sq m / 1023 sq ft

- BLK 72 #05-06 - #11-06
- BLK 74 #05-14 - #11-14
- BLK 84 #05-54 - #13-54



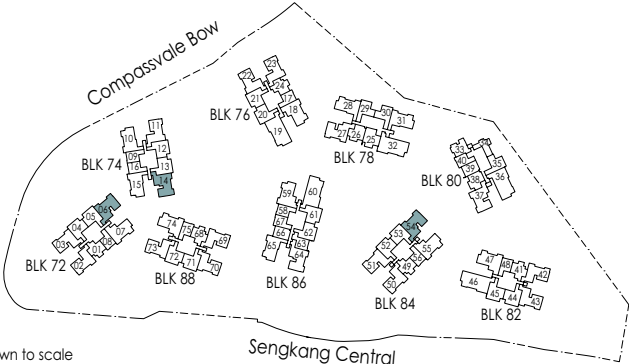
* Mirror Image



Area includes air-con (A/C) ledge, private enclosed space (PES), balcony and strata void area where applicable. Some units are mirror images of the apartment plans shown in the brochure. Please refer to the keyplan for orientation. The plans are subject to change as may be approved by relevant authorities. All floor plans are approximate measurements only and are subject to government re-survey. The balcony shall not be enclosed unless with the approved balcony screen. For an illustration of the approved balcony screen, please refer to the diagram annexed hereto as "Annexure A".



Keyplan is not drawn to scale



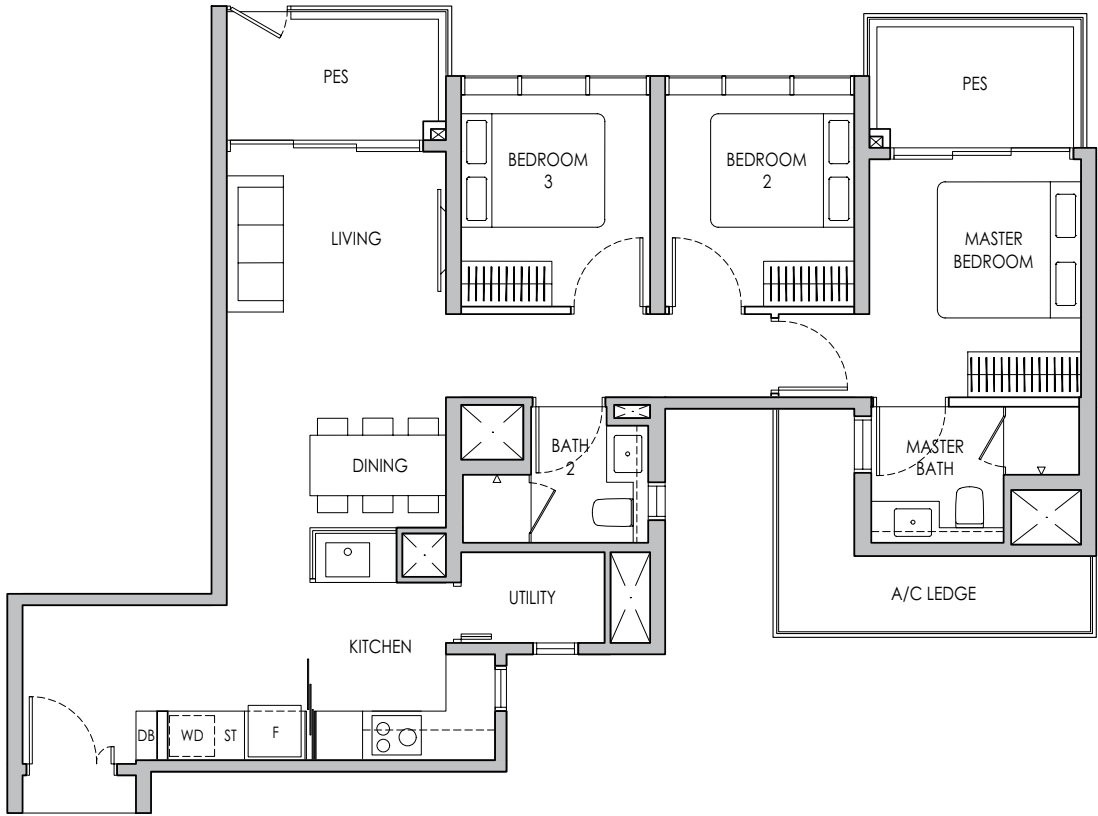
3-BEDROOM PREMIUM

Type C3Pa(p)

96 sq m / 1033 sq ft

BLK 78 #04-27

BLK 80 #04-37*

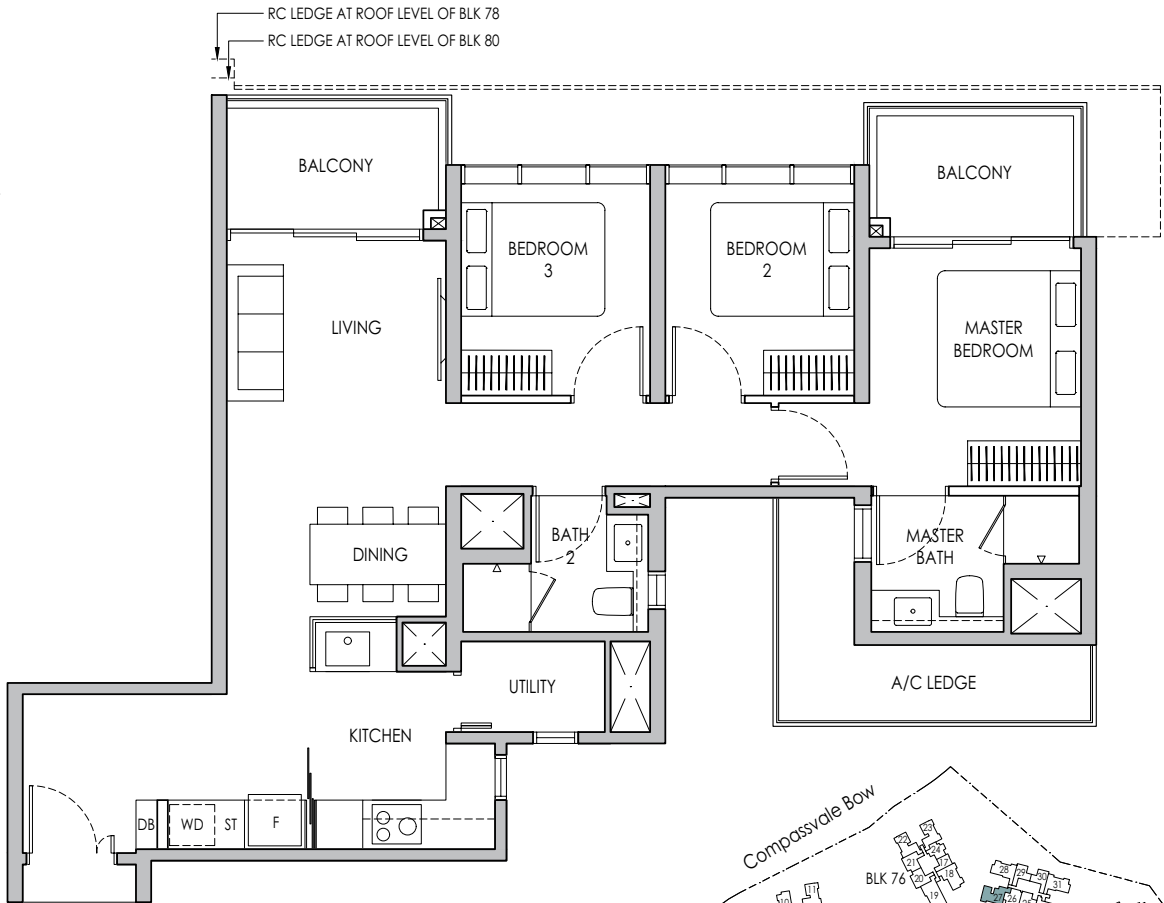


Type C3Pa

96 sq m / 1033 sq ft

BLK 78 #05-27 - #13-27

BLK 80 #05-37* - #13-37*



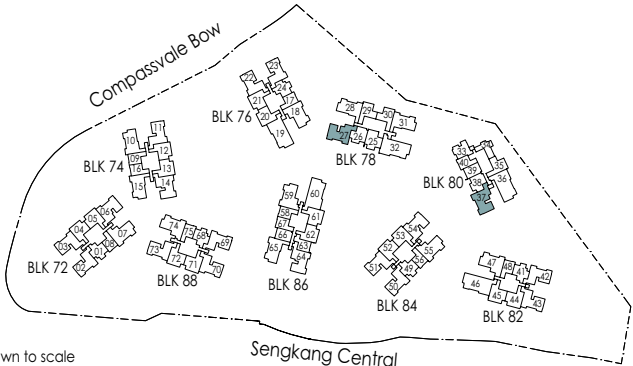
* Mirror Image



Area includes air-con (A/C) ledge, private enclosed space (PES), balcony and strata void area where applicable. Some units are mirror images of the apartment plans shown in the brochure. Please refer to the keyplan for orientation. The plans are subject to change as may be approved by relevant authorities. All floor plans are approximate measurements only and are subject to government re-survey. The balcony shall not be enclosed unless with the approved balcony screen. For an illustration of the approved balcony screen, please refer to the diagram annexed hereto as "Annexure A".



Keyplan is not drawn to scale

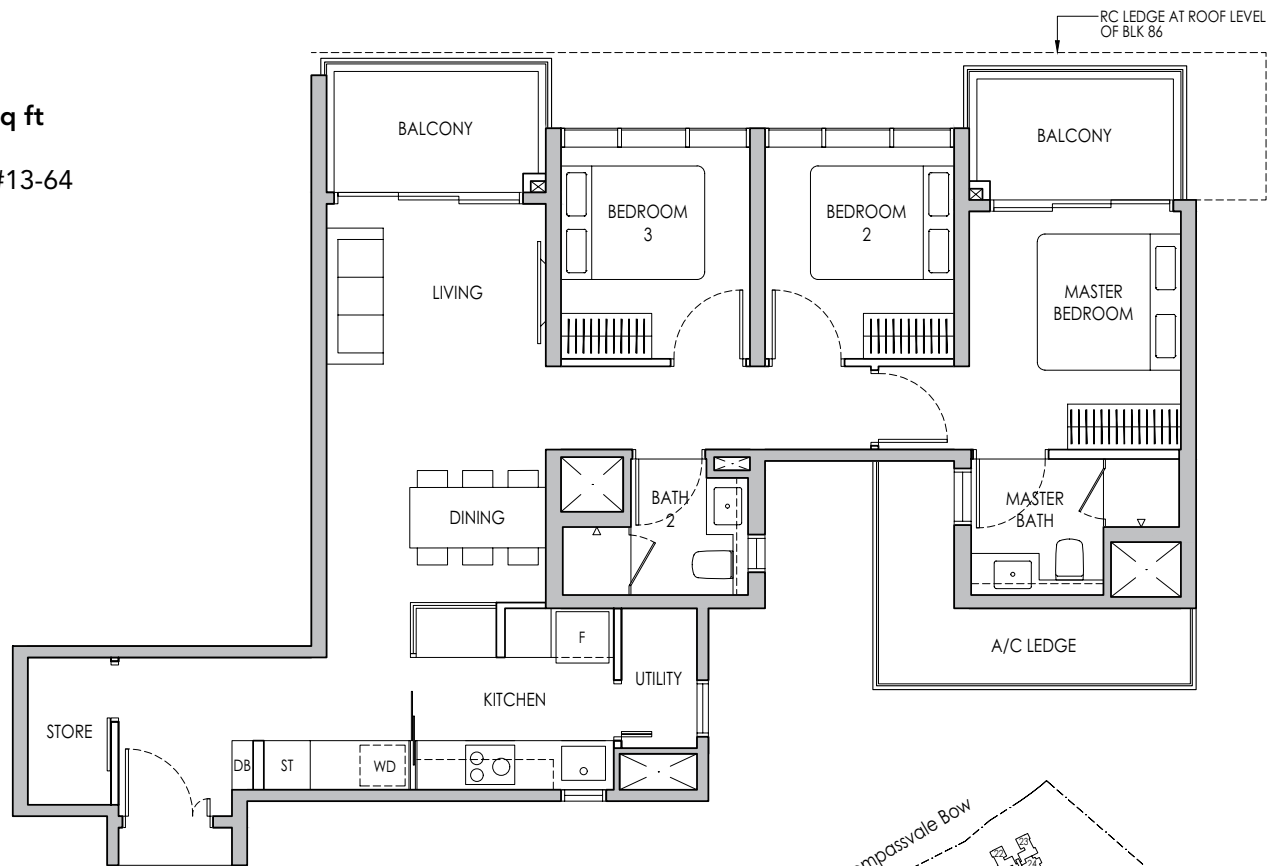


3-BEDROOM PREMIUM

Type C4P(p)
98 sq m / 1055 sq ft
BLK 86 #04-64



Type C4P
98 sq m / 1055 sq ft
BLK 86 #05-64 - #13-64



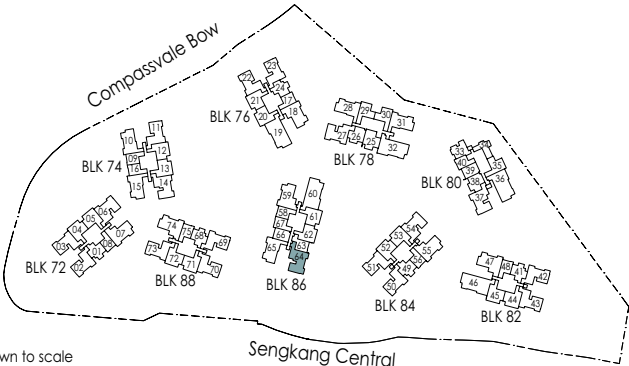
* Mirror Image



Area includes air-con (A/C) ledge, private enclosed space (PES), balcony and strata void area where applicable. Some units are mirror images of the apartment plans shown in the brochure. Please refer to the keyplan for orientation. The plans are subject to change as may be approved by relevant authorities. All floor plans are approximate measurements only and are subject to government re-survey. The balcony shall not be enclosed unless with the approved balcony screen. For an illustration of the approved balcony screen, please refer to the diagram annexed hereto as "Annexure A".



Keyplan is not drawn to scale

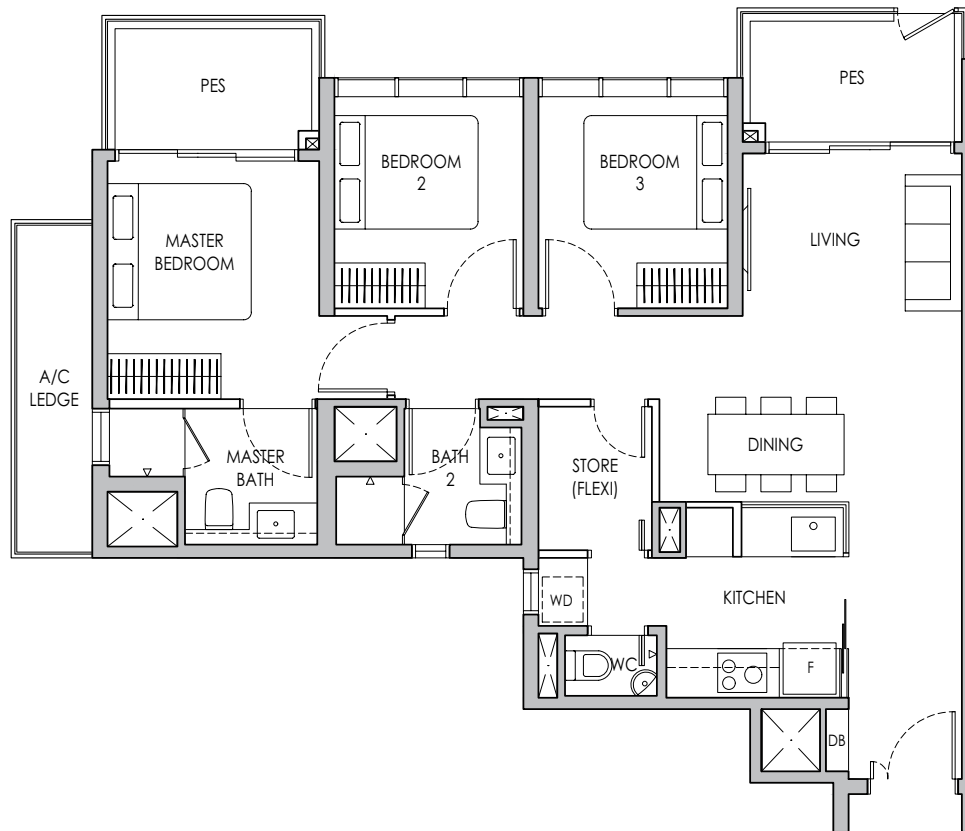


3-BEDROOM PREMIUM + FLEXI

Type C5PF(p)

94 sq m / 1012 sq ft

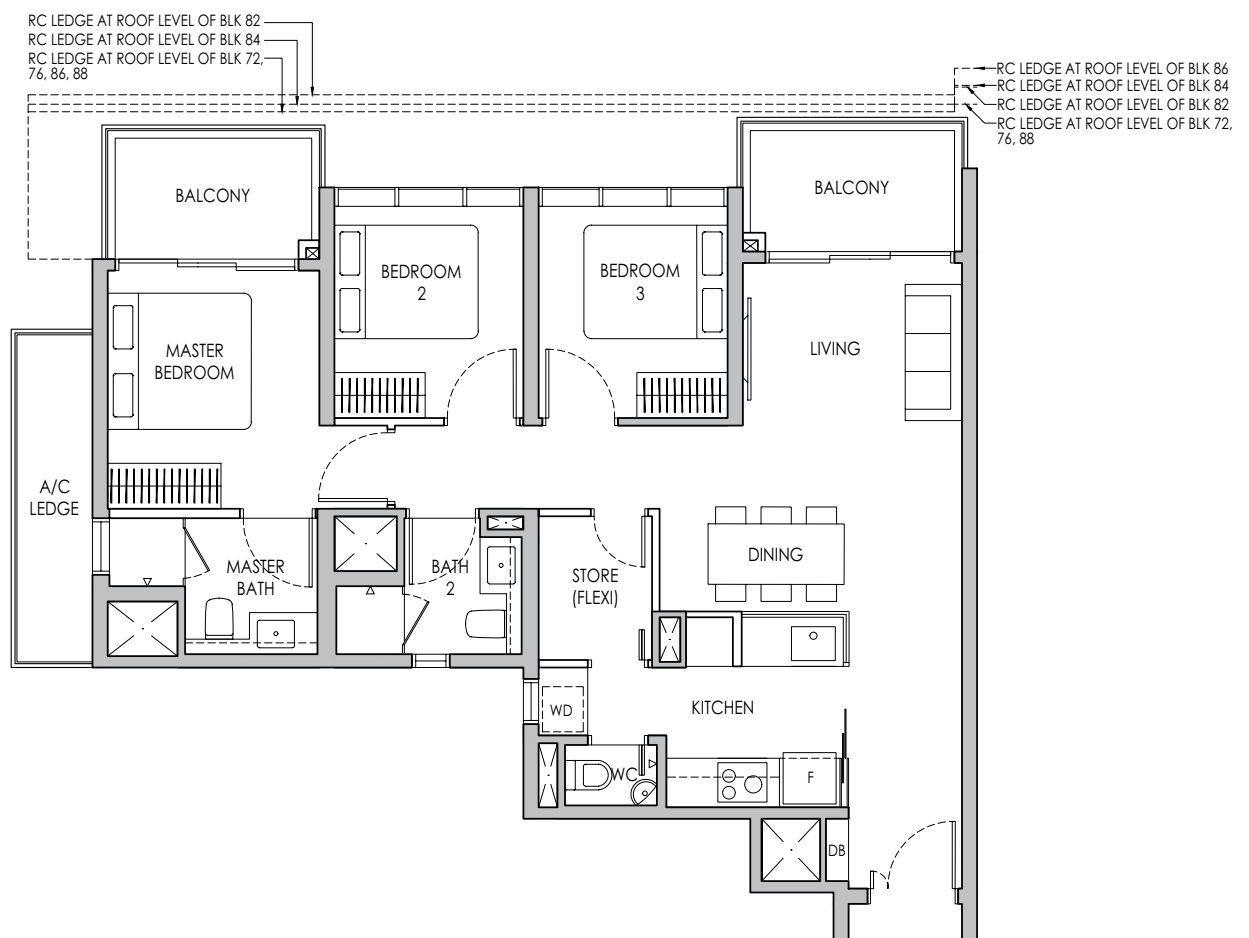
BLK 72 #04-07
BLK 76 #04-18*
BLK 82 #04-47
BLK 84 #04-55
BLK 86 #04-59*
BLK 88 #04-74



Type C5PF

94 sq m / 1012 sq ft

BLK 72 #05-07 - #11-07
BLK 76 #05-18* - #12-18*
BLK 82 #05-47 - #13-47
BLK 84 #05-55 - #13-55
BLK 86 #05-59* - #13-59*
BLK 88 #05-74 - #11-74



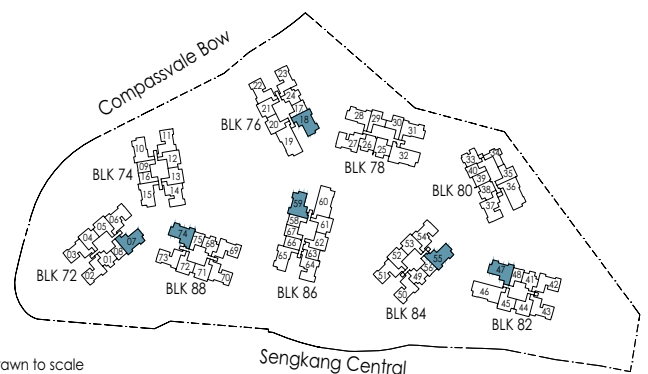
* Mirror Image



Area includes air-con (A/C) ledge, private enclosed space (PES), balcony and strata void area where applicable. Some units are mirror images of the apartment plans shown in the brochure. Please refer to the keyplan for orientation. The plans are subject to change as may be approved by relevant authorities. All floor plans are approximate measurements only and are subject to government re-survey. The balcony shall not be enclosed unless with the approved balcony screen. For an illustration of the approved balcony screen, please refer to the diagram annexed hereto as "Annexure A".



Keyplan is not drawn to scale



4-BEDROOM PREMIUM + FLEXI

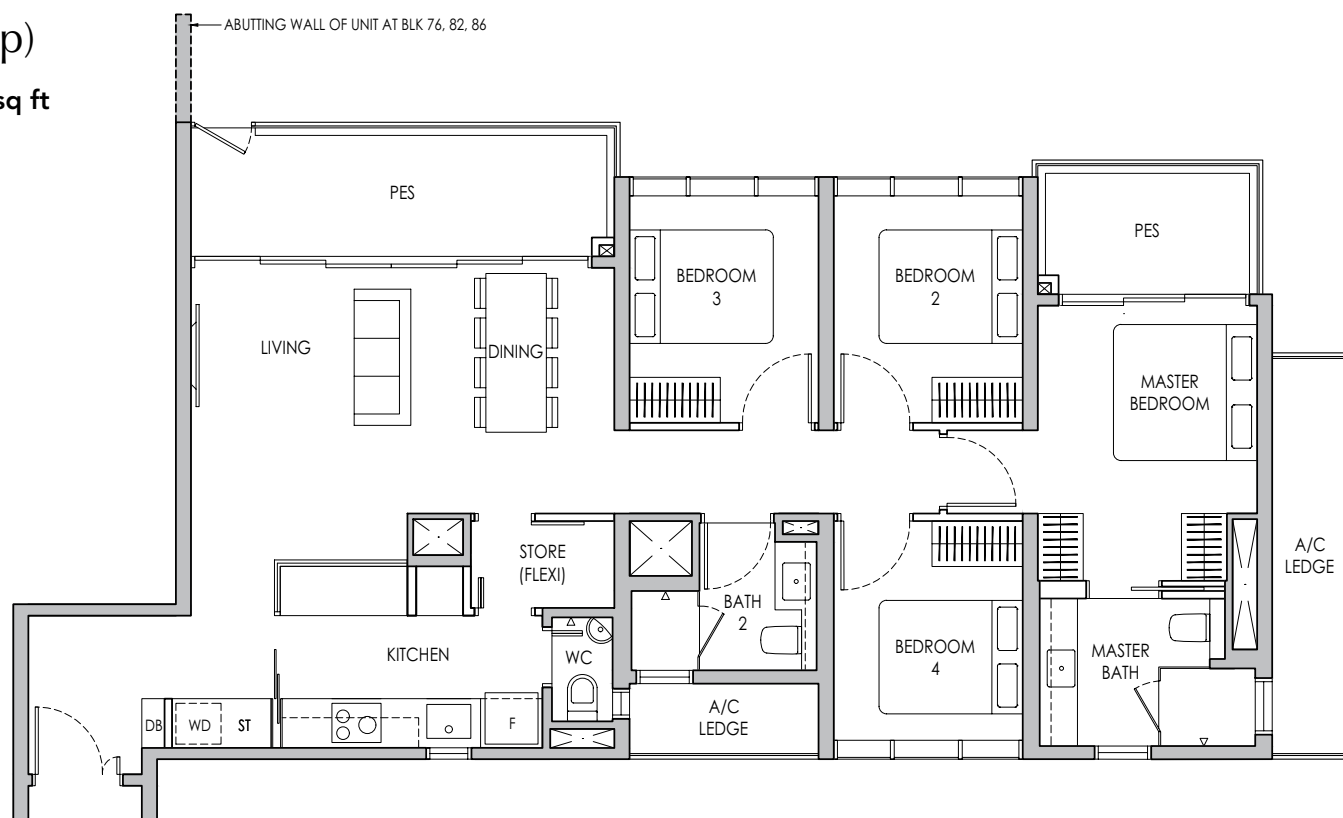
Type D1PF(p)

123 sq m / 1324 sq ft

BLK 76 #04-19*

BLK 82 #04-46

BLK 86 #04-60*



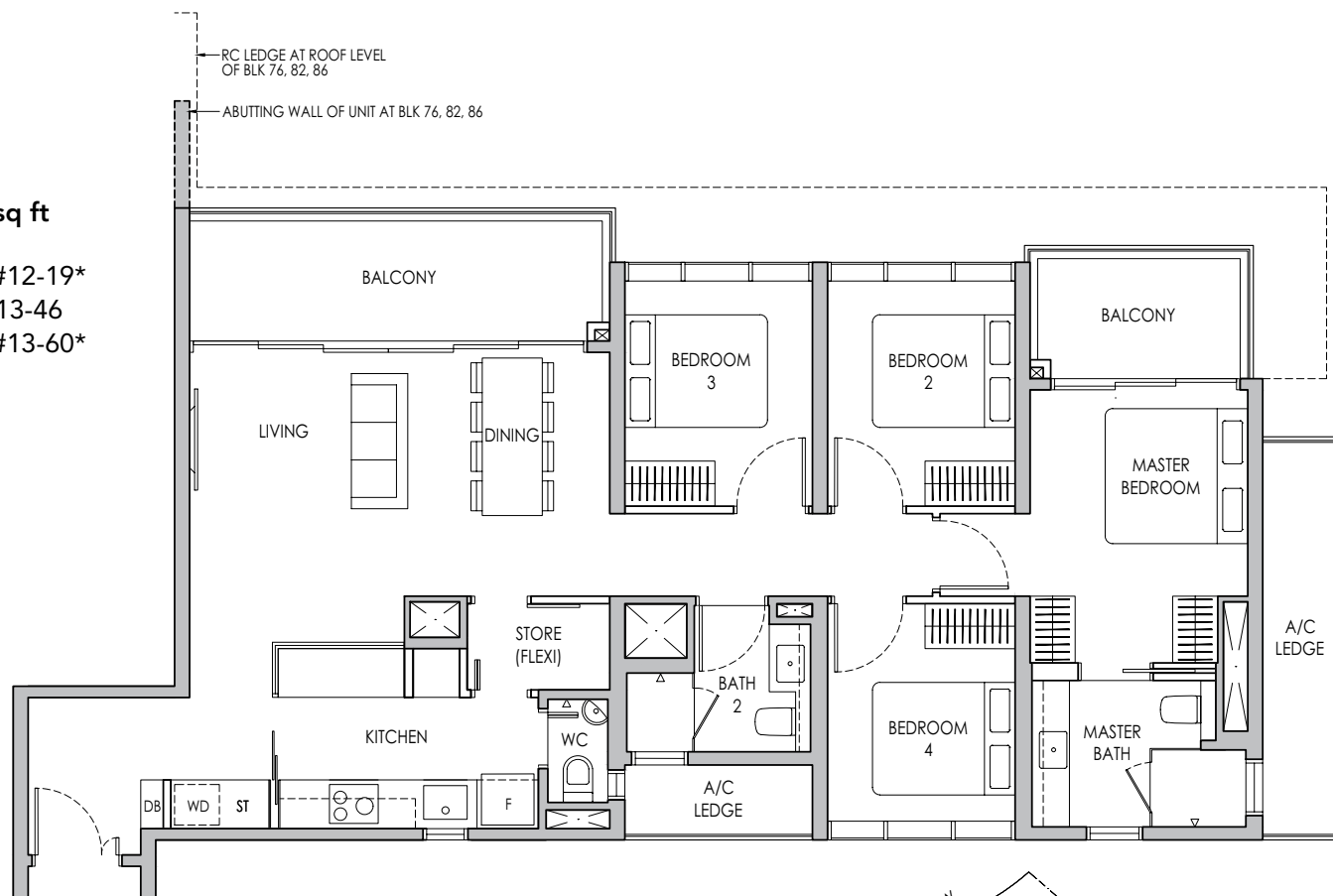
Type D1PF

123 sq m / 1324 sq ft

BLK 76 #05-19* - #12-19*

BLK 82 #05-46 - #13-46

BLK 86 #05-60* - #13-60*



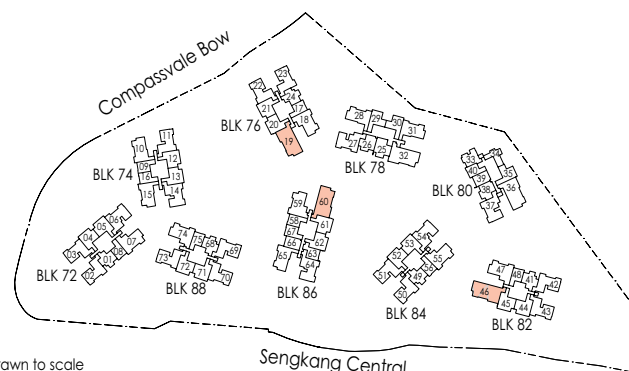
* Mirror Image



Area includes air-con (A/C) ledge, private enclosed space (PES), balcony and strata void area where applicable. Some units are mirror images of the apartment plans shown in the brochure. Please refer to the keyplan for orientation. The plans are subject to change as may be approved by relevant authorities. All floor plans are approximate measurements only and are subject to government re-survey. The balcony shall not be enclosed unless with the approved balcony screen. For an illustration of the approved balcony screen, please refer to the diagram annexed hereto as "Annexure A".



Keyplan is not drawn to scale



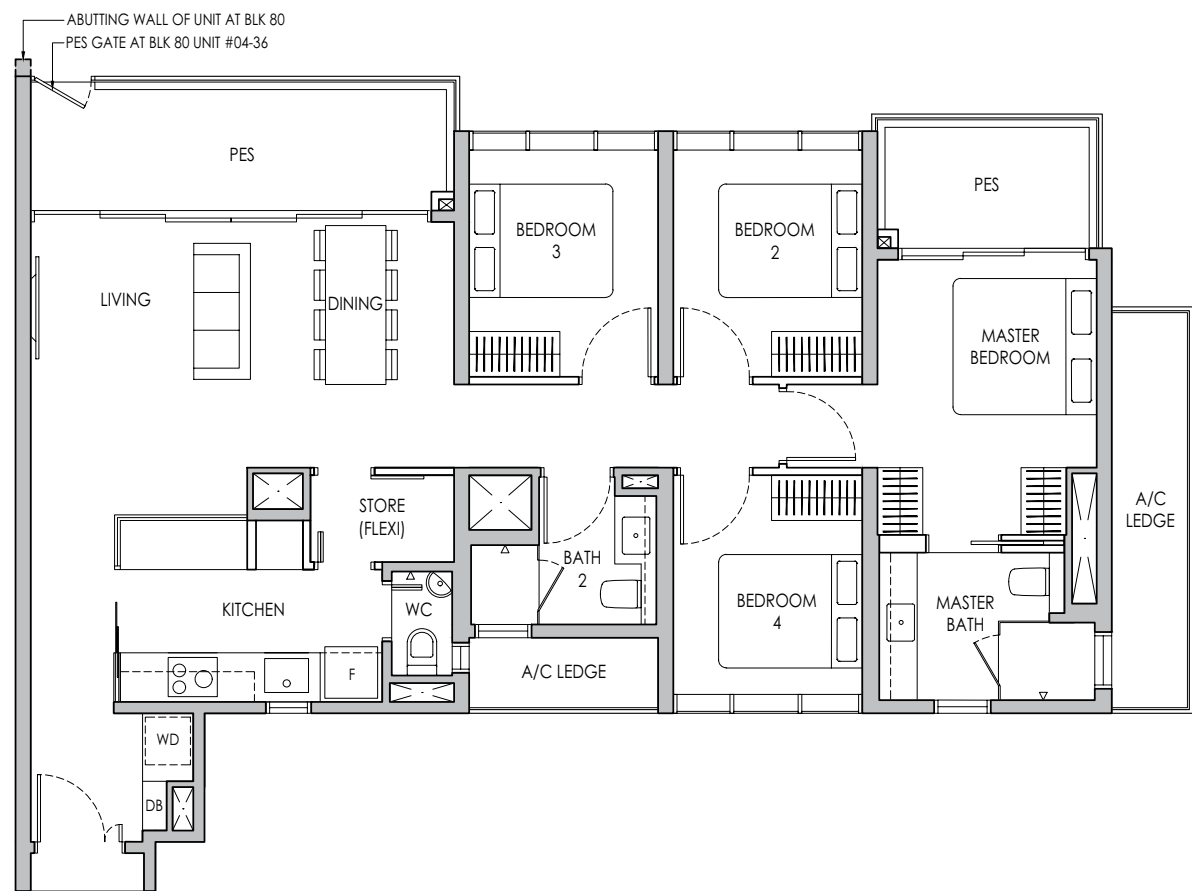
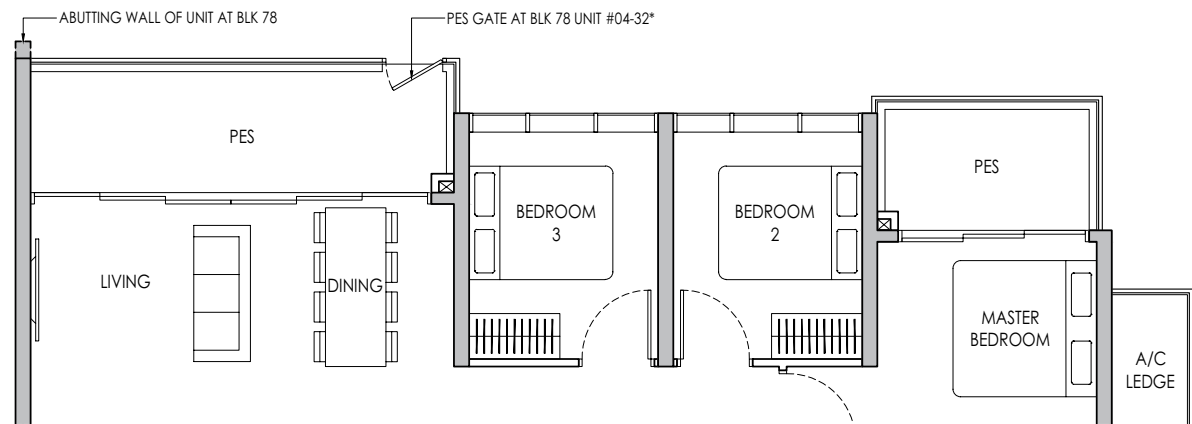
4-BEDROOM PREMIUM + FLEXI

Type D2PF(p)

122 sq m / 1313 sq ft

BLK 78 #04-32*

BLK 80 #04-36



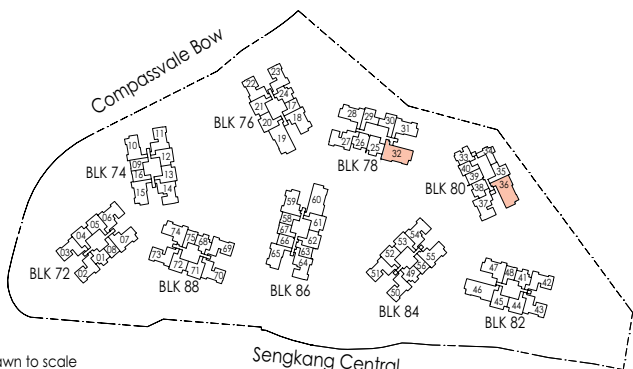
* Mirror Image



Area includes air-con (A/C) ledge, private enclosed space (PES), balcony and strata void area where applicable. Some units are mirror images of the apartment plans shown in the brochure. Please refer to the keyplan for orientation. The plans are subject to change as may be approved by relevant authorities. All floor plans are approximate measurements only and are subject to government re-survey. The balcony shall not be enclosed unless with the approved balcony screen. For an illustration of the approved balcony screen, please refer to the diagram annexed hereto as "Annexure A".



Keyplan is not drawn to scale



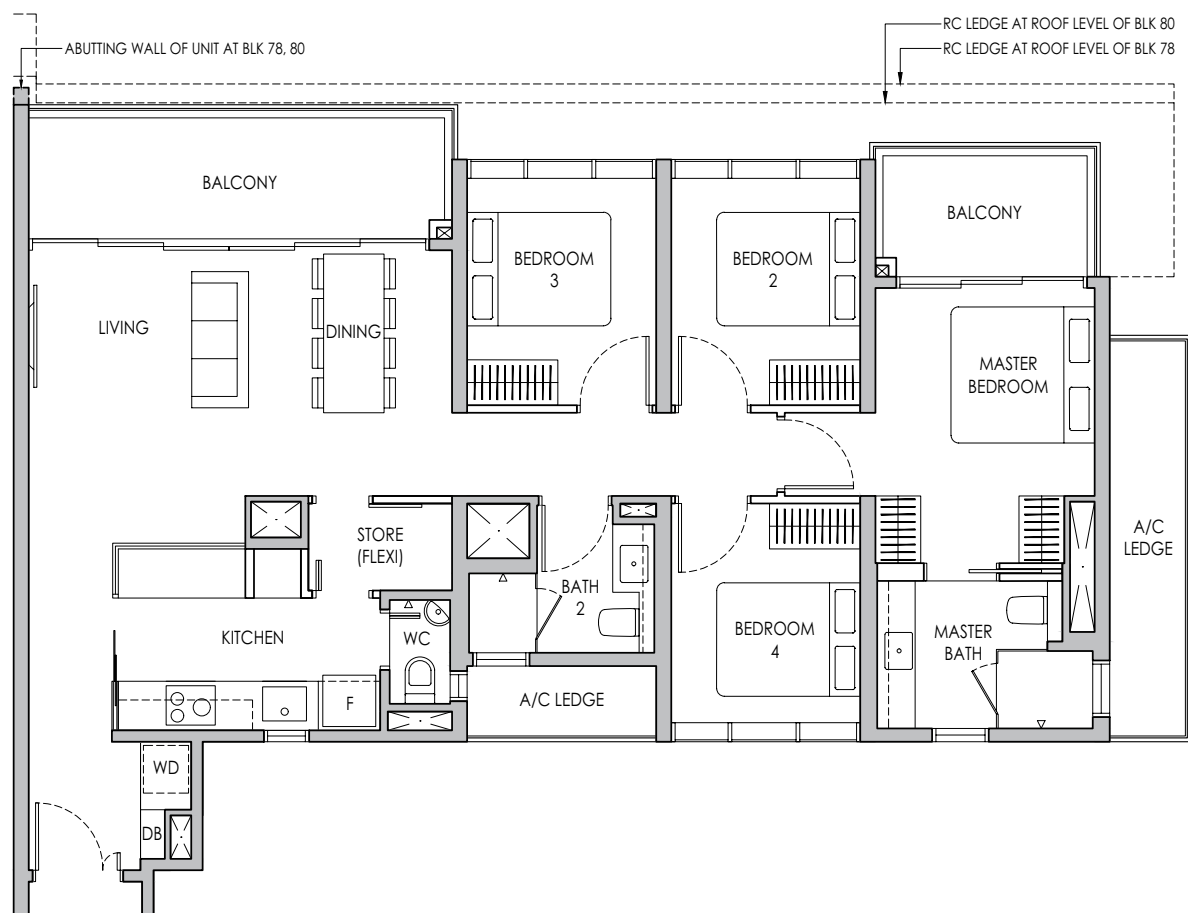
4-BEDROOM PREMIUM + FLEXI

Type D2PF

122 sq m / 1313 sq ft

BLK 78 #05-32* - #13-32*

BLK 80 #05-36 - #13-36



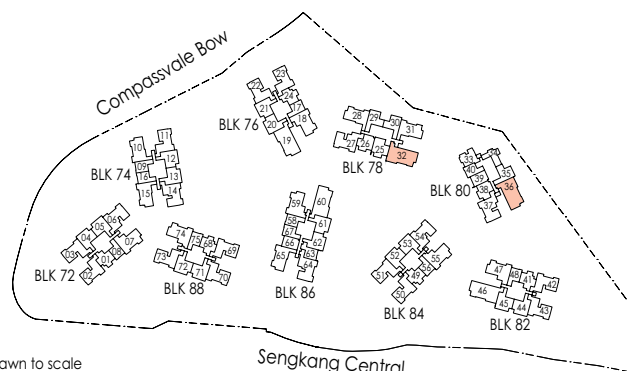
* Mirror Image



Area includes air-con (A/C) ledge, private enclosed space (PES), balcony and strata void area where applicable. Some units are mirror images of the apartment plans shown in the brochure. Please refer to the keyplan for orientation. The plans are subject to change as may be approved by relevant authorities. All floor plans are approximate measurements only and are subject to government re-survey. The balcony shall not be enclosed unless with the approved balcony screen. For an illustration of the approved balcony screen, please refer to the diagram annexed hereto as "Annexure A".

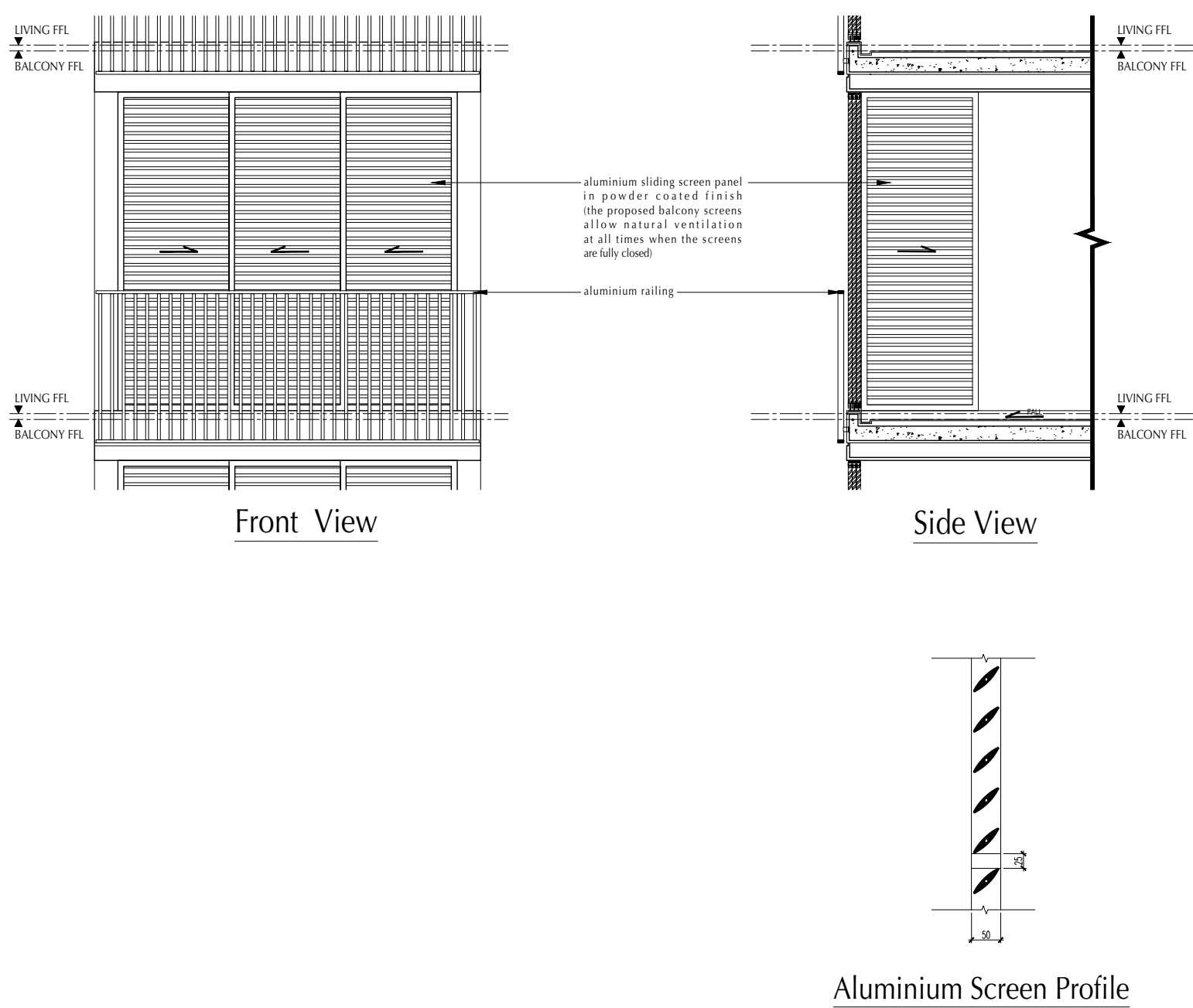


Keyplan is not drawn to scale



ANNEXURE A

Approved Typical Balcony Screen



Note:
The balcony shall not be enclosed unless with the approved balcony screen as shown above. The cost of screen and installation shall be borne by the Purchaser.