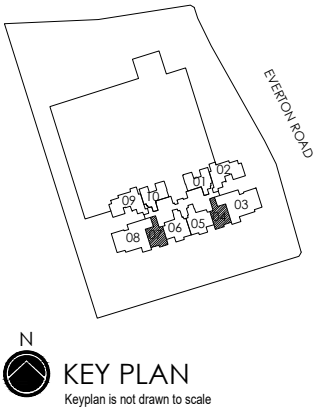
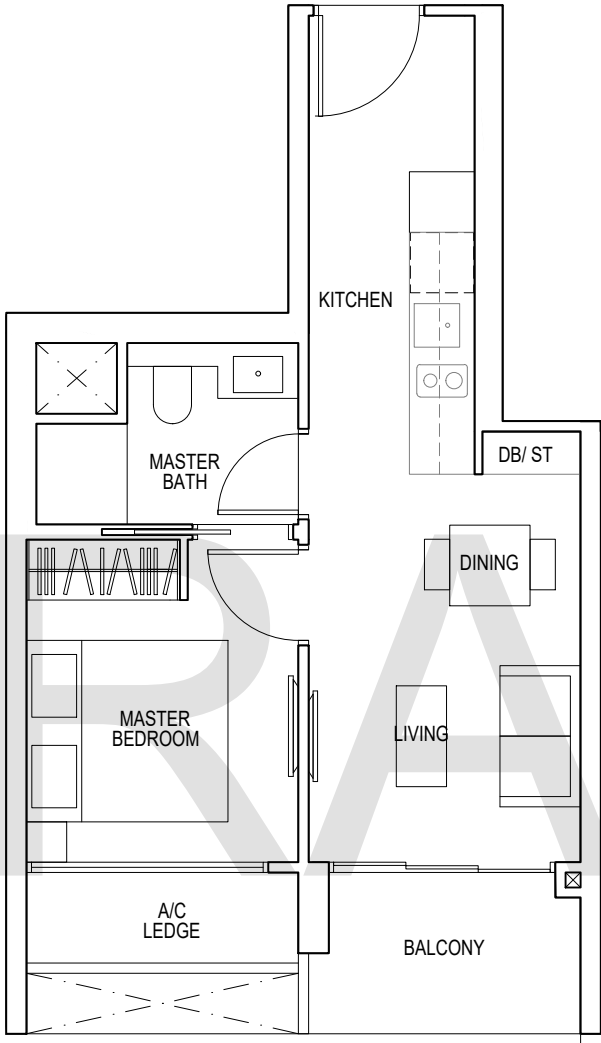


1 - BEDROOM

TYPE A1
43 sq m / 463 sq ft

- #06-04* to #12-04*
- #06-07 to #12-07
- #15-04* to #22-04*
- #15-07 to #22-07



*Mirror Image



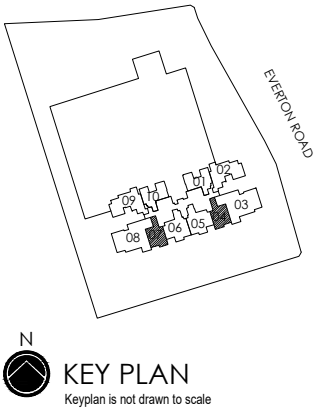
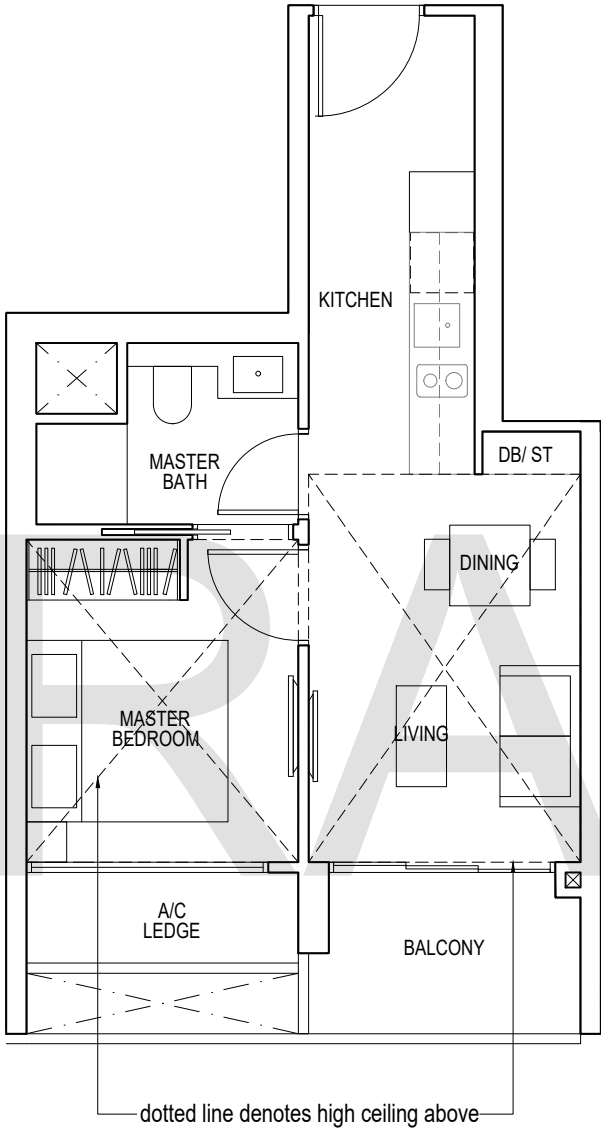
Area includes air-con (A/C) ledge, balcony and strata void area where applicable. Some units are mirror images of the apartment plans shown in the brochure. Please refer to the key plan for orientation. The plans are subject to change as may be approved by relevant authorities. All floor plans are approximate measurements only and are subject to government re-survey. The balcony shall not be enclosed unless with the approved balcony screen. For an illustration of the approved balcony screen, please refer to the diagram annexed hereto as "Annexure 1".

1 - BEDROOM

TYPE A2

55 sq m / 592 sq ft

#13-04*, #13-07, #23-04*, #23-07



*Mirror Image

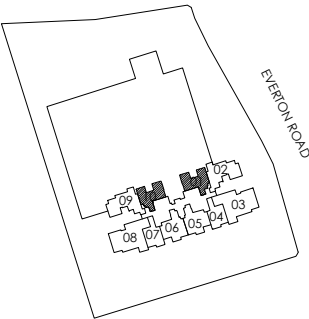


Area includes air-con (A/C) ledge, balcony and strata void area where applicable. Some units are mirror images of the apartment plans shown in the brochure. Please refer to the key plan for orientation. The plans are subject to change as may be approved by relevant authorities. All floor plans are approximate measurements only and are subject to government re-survey. The balcony shall not be enclosed unless with the approved balcony screen. For an illustration of the approved balcony screen, please refer to the diagram annexed hereto as "Annexure 1".

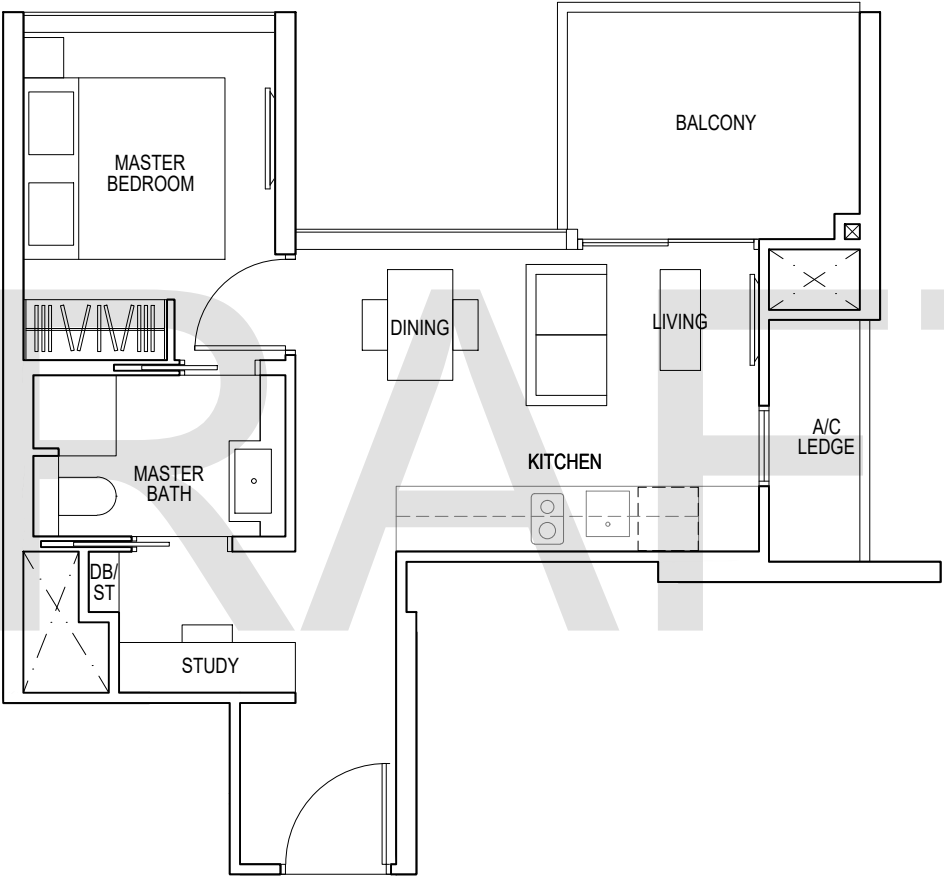
1 - BEDROOM + STUDY

TYPE A3
47 sq m / 506 sq ft

#06-01*to #12-01*
#06-10 to #12-10



N
KEY PLAN
Keyplan is not drawn to scale



*Mirror Image

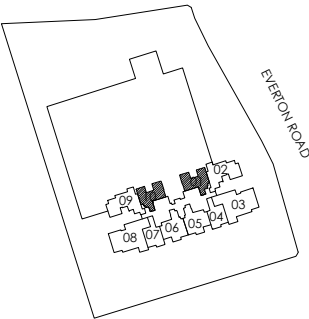
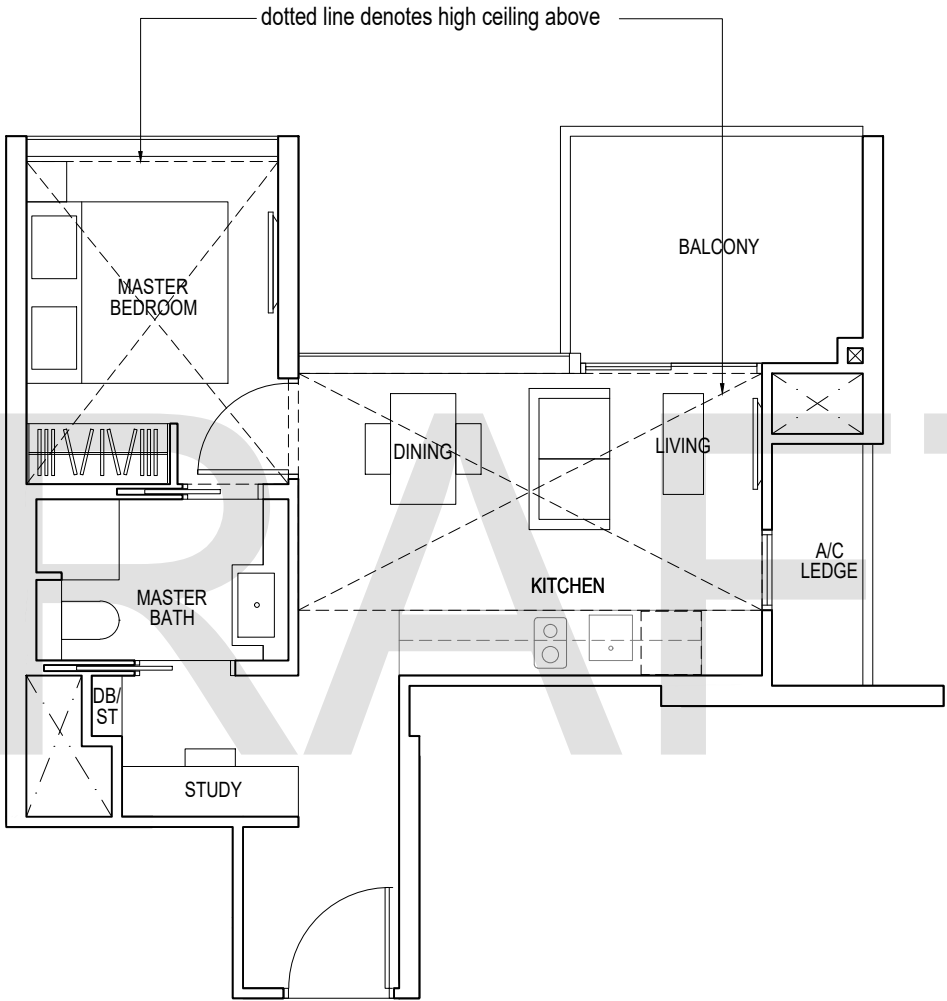


Area includes air-con (A/C) ledge, balcony and strata void area where applicable. Some units are mirror images of the apartment plans shown in the brochure. Please refer to the key plan for orientation. The plans are subject to change as may be approved by relevant authorities. All floor plans are approximate measurements only and are subject to government re-survey. The balcony shall not be enclosed unless with the approved balcony screen. For an illustration of the approved balcony screen, please refer to the diagram annexed hereto as "Annexure 1".

1 - BEDROOM + STUDY

TYPE A4
59 sq m / 635 sq ft

#13-01*, #13-10



*Mirror Image

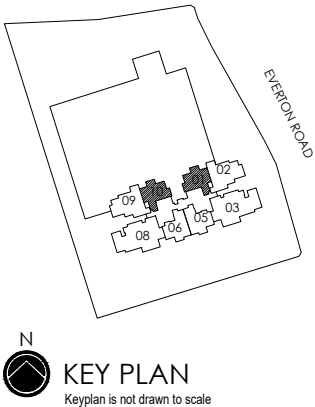
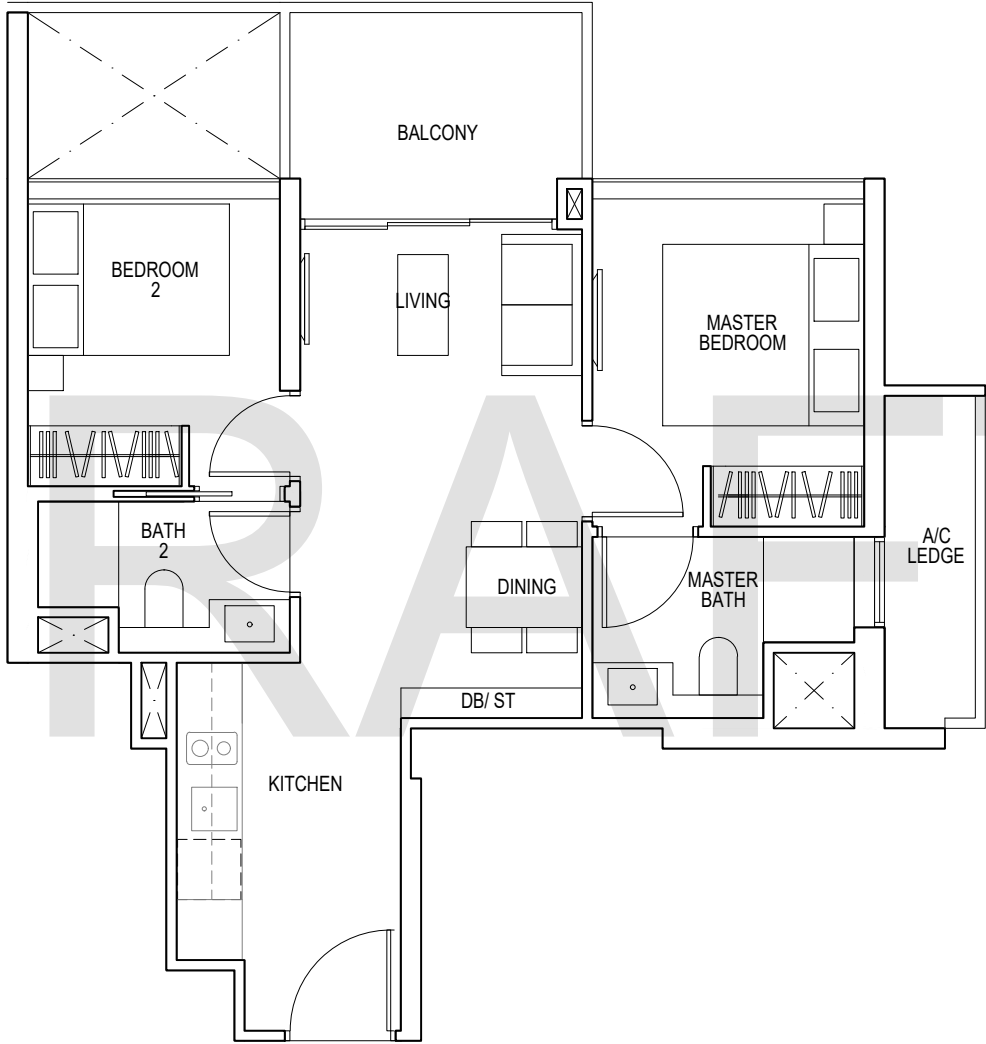


Area includes air-con (A/C) ledge, balcony and strata void area where applicable. Some units are mirror images of the apartment plans shown in the brochure. Please refer to the key plan for orientation. The plans are subject to change as may be approved by relevant authorities. All floor plans are approximate measurements only and are subject to government re-survey. The balcony shall not be enclosed unless with the approved balcony screen. For an illustration of the approved balcony screen, please refer to the diagram annexed hereto as "Annexure 1".

2 - BEDROOM

TYPE B1
60 sq m / 646 sq ft

#15-01*to #22-01*
#15-10 to #22-10
#25-01*to #35-01*
#25-10 to #35-10



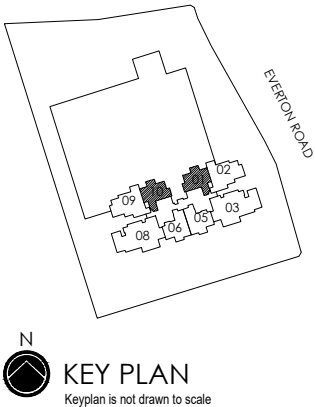
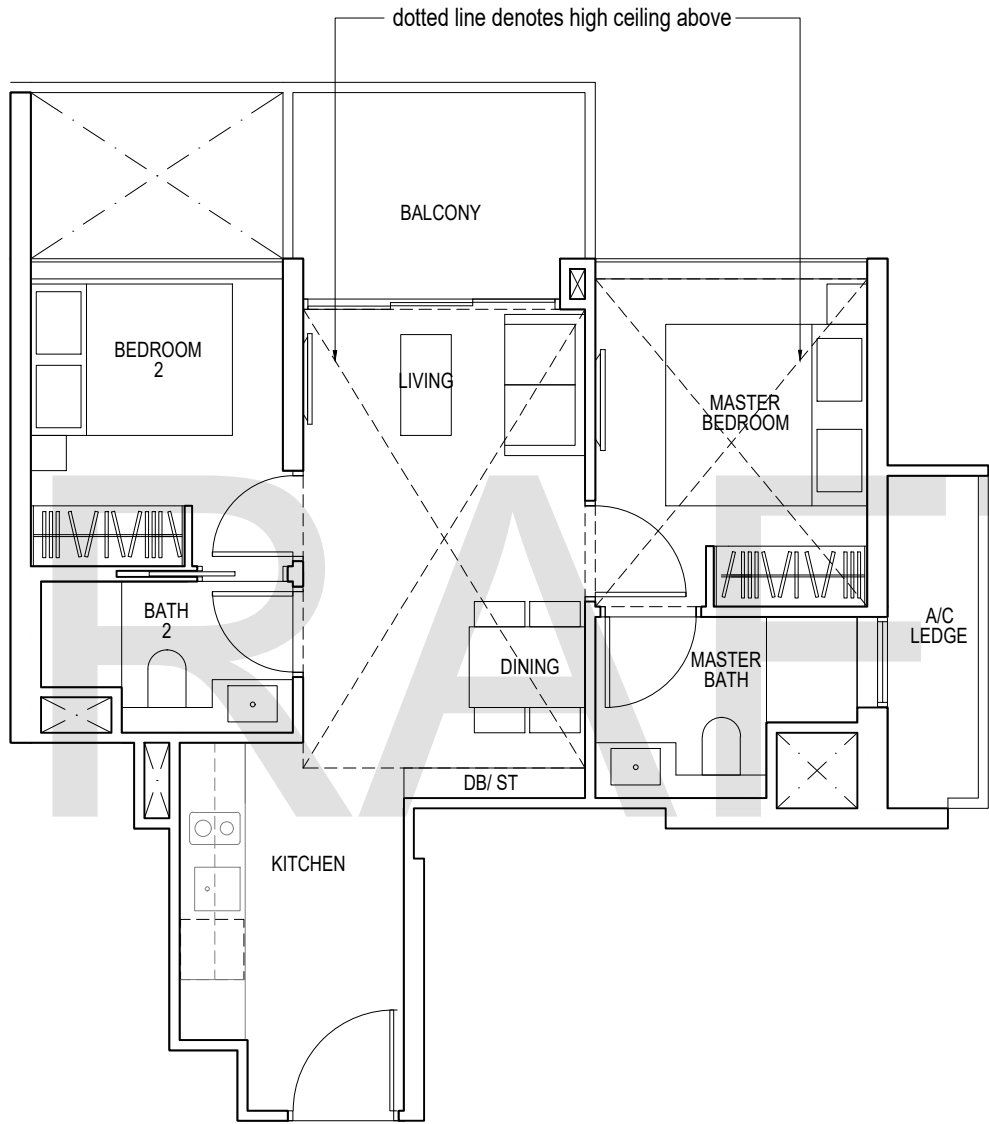
*Mirror Image



Area includes air-con (A/C) ledge, balcony and strata void area where applicable. Some units are mirror images of the apartment plans shown in the brochure. Please refer to the key plan for orientation. The plans are subject to change as may be approved by relevant authorities. All floor plans are approximate measurements only and are subject to government re-survey. The balcony shall not be enclosed unless with the approved balcony screen. For an illustration of the approved balcony screen, please refer to the diagram annexed hereto as "Annexure 1".

2 - BEDROOM
TYPE B2
75 sq m / 807 sq ft

#23-01*, #23-10



*Mirror Image



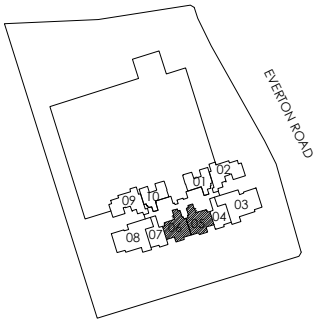
Area includes air-con (A/C) ledge, balcony and strata void area where applicable. Some units are mirror images of the apartment plans shown in the brochure. Please refer to the key plan for orientation. The plans are subject to change as may be approved by relevant authorities. All floor plans are approximate measurements only and are subject to government re-survey. The balcony shall not be enclosed unless with the approved balcony screen. For an illustration of the approved balcony screen, please refer to the diagram annexed hereto as "Annexure 1".

2 - BEDROOM

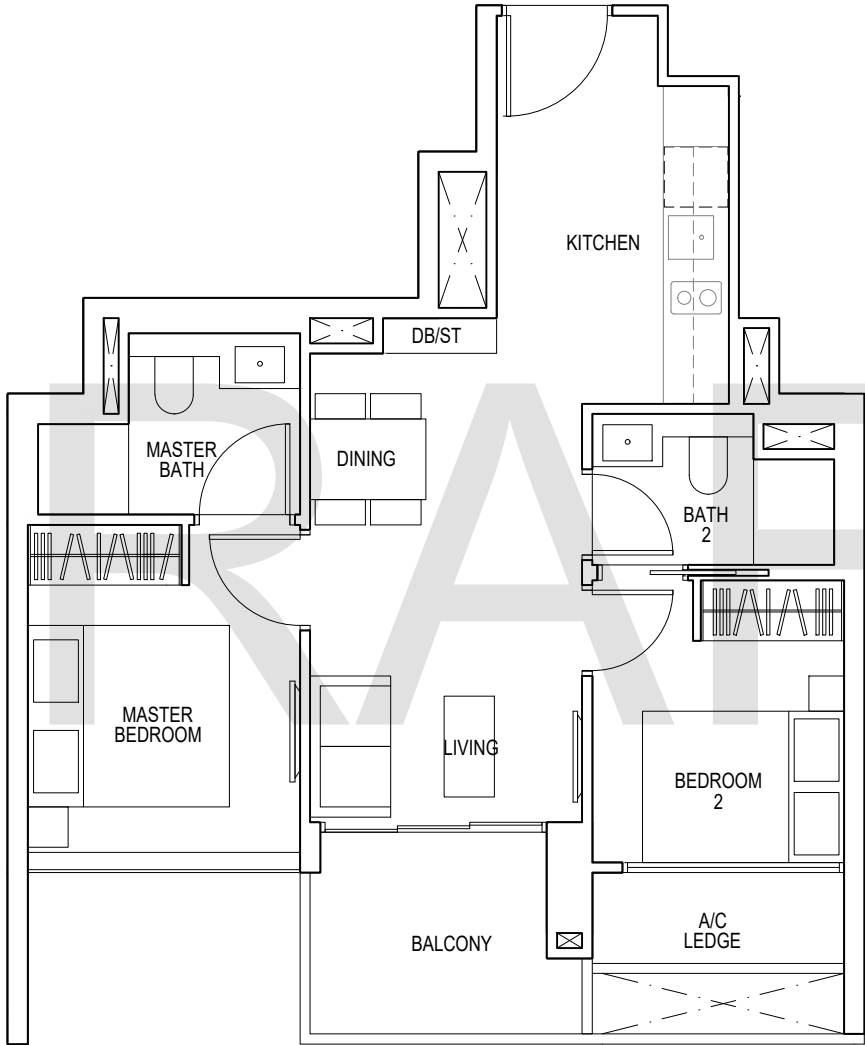
TYPE B3

58 sq m / 624 sq ft

- #06-05*to #12-05*
- #06-06 to #12-06
- #15-05*to #22-05*
- #15-06 to #22-06



N
KEY PLAN
Keyplan is not drawn to scale



*Mirror Image



Area includes air-con (A/C) ledge, balcony and strata void area where applicable. Some units are mirror images of the apartment plans shown in the brochure. Please refer to the key plan for orientation. The plans are subject to change as may be approved by relevant authorities. All floor plans are approximate measurements only and are subject to government re-survey. The balcony shall not be enclosed unless with the approved balcony screen. For an illustration of the approved balcony screen, please refer to the diagram annexed hereto as "Annexure 1".

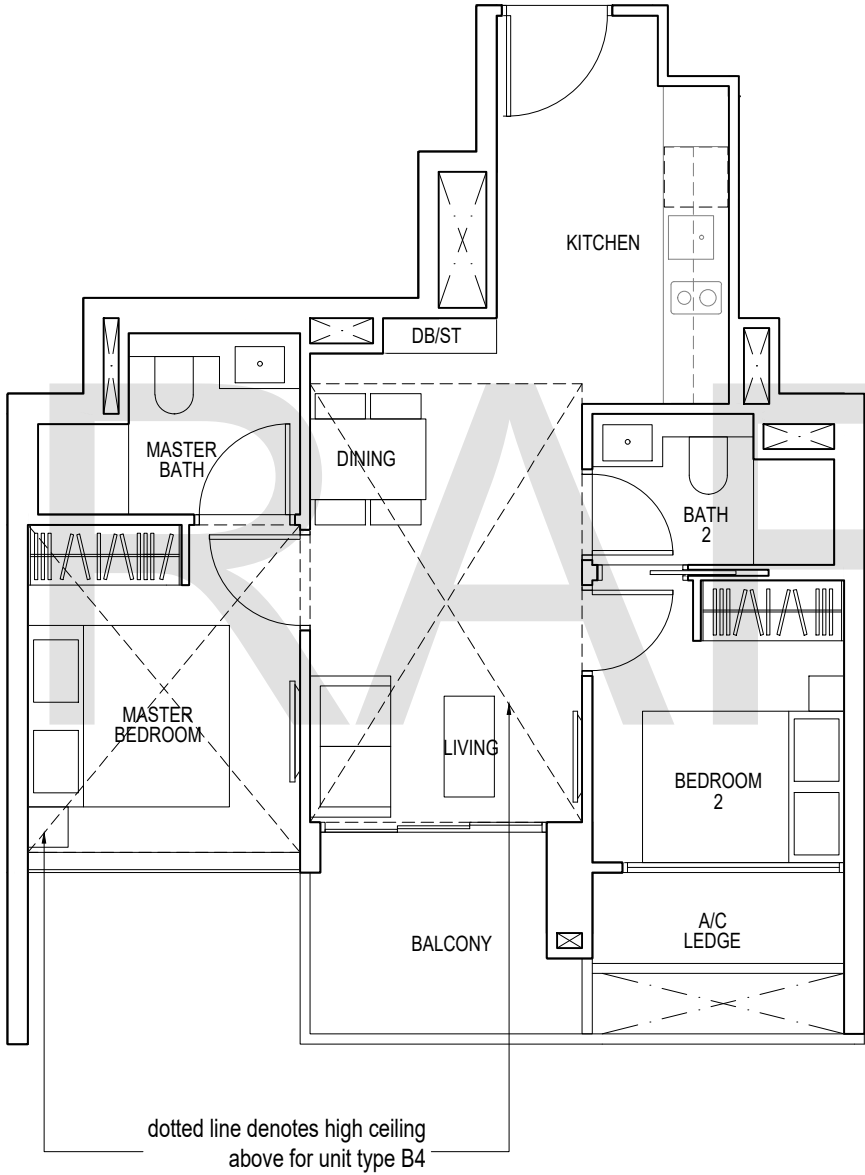
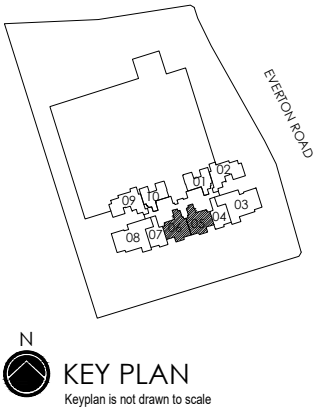
2 - BEDROOM

TYPE B4

71 sq m / 764 sq ft

#13-05*,
#23-05*, #23-06

#13-06



*Mirror Image

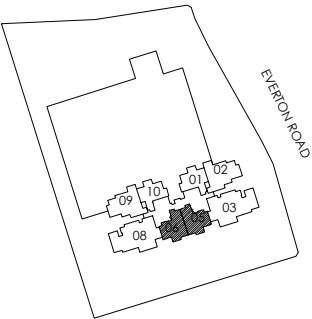
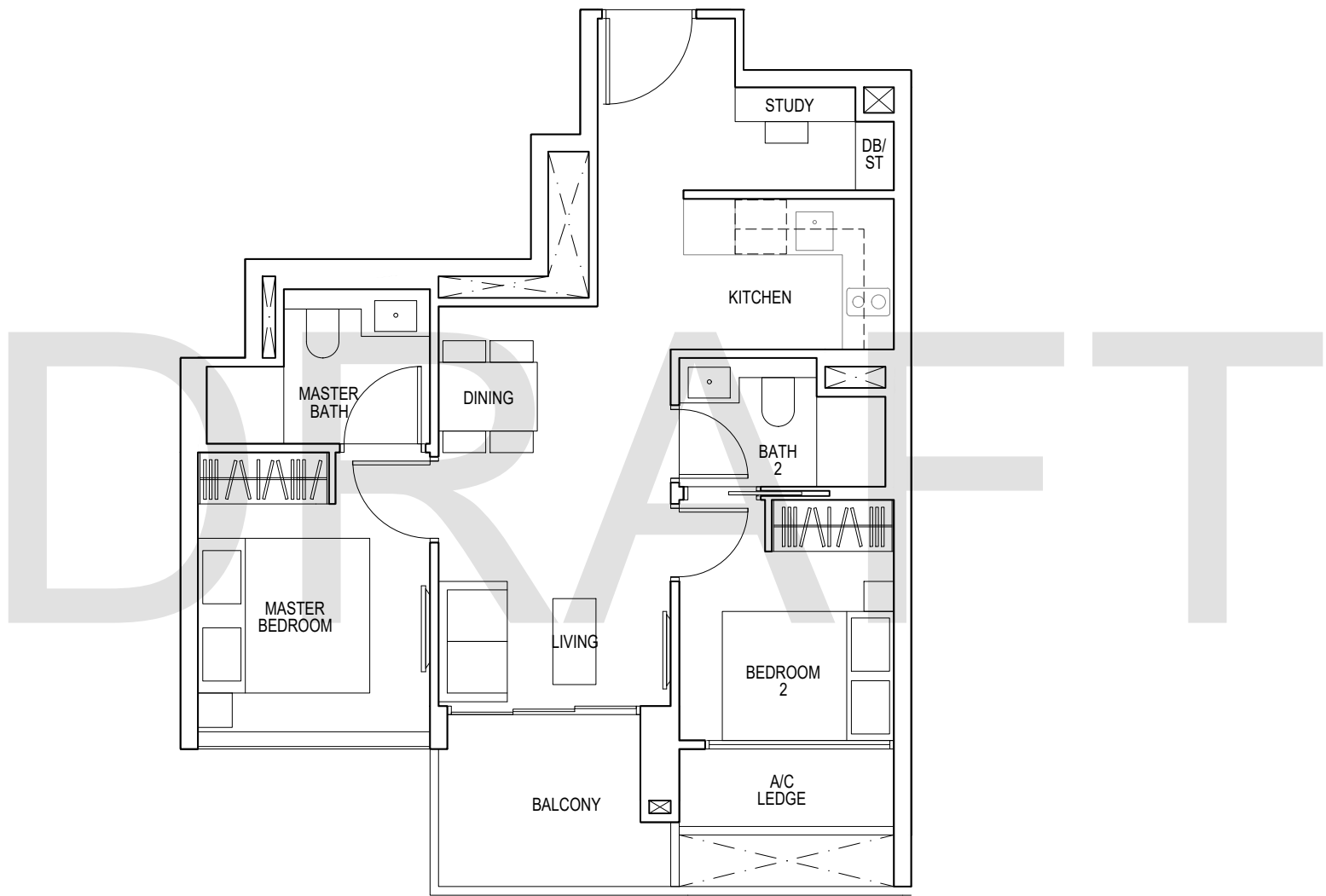


Area includes air-con (A/C) ledge, balcony and strata void area where applicable. Some units are mirror images of the apartment plans shown in the brochure. Please refer to the key plan for orientation. The plans are subject to change as may be approved by relevant authorities. All floor plans are approximate measurements only and are subject to government re-survey. The balcony shall not be enclosed unless with the approved balcony screen. For an illustration of the approved balcony screen, please refer to the diagram annexed hereto as "Annexure 1".

2 - BEDROOM + STUDY

TYPE B5
61 sq m / 657 sq ft

#25-05*to #35-05*
#25-06 to #35-06



N
KEY PLAN
Keyplan is not drawn to scale

*Mirror Image

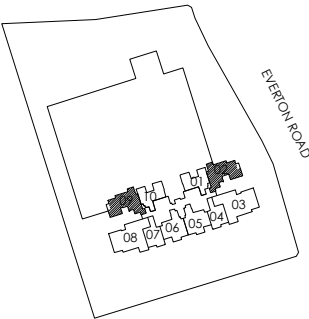
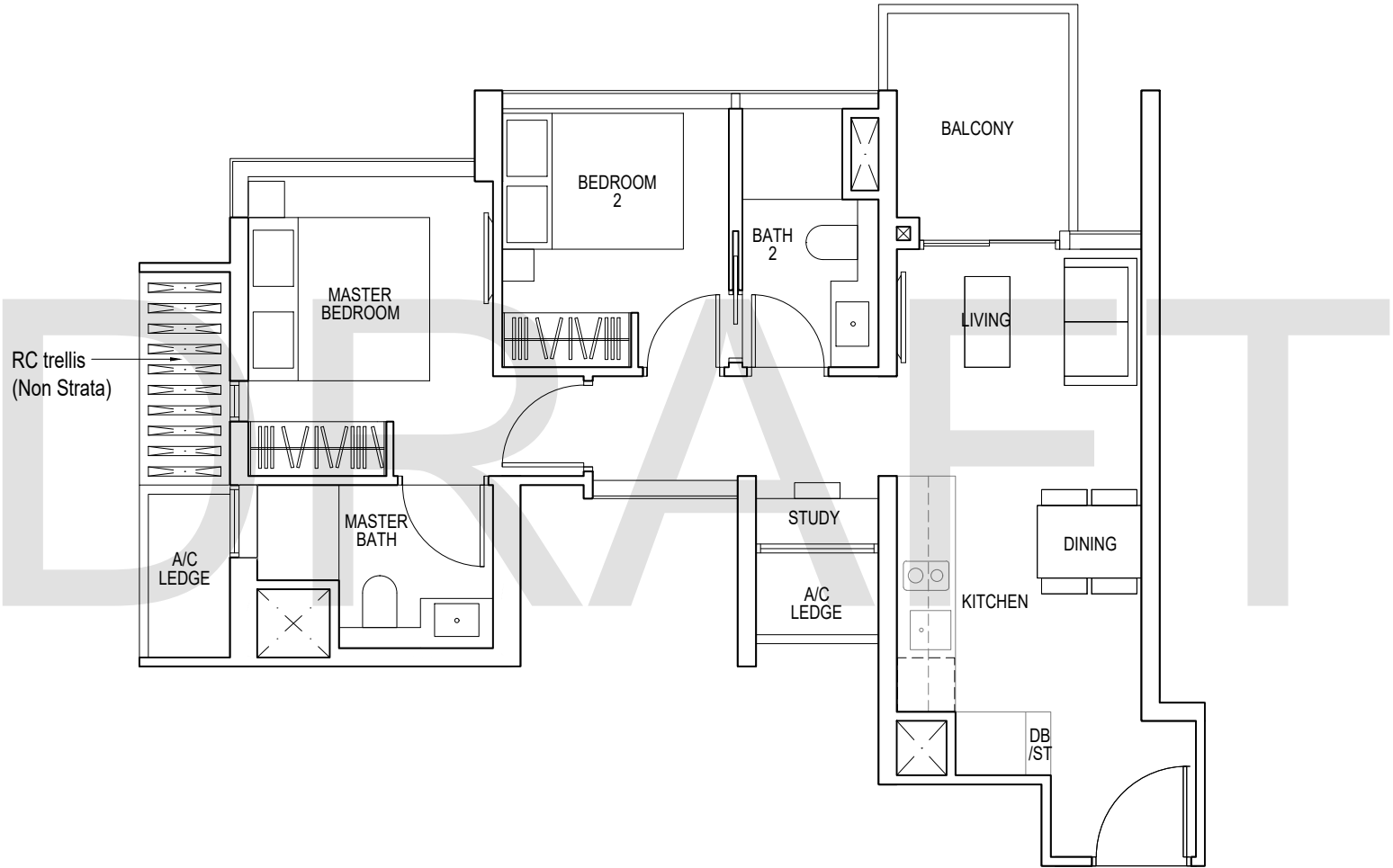


Area includes air-con (A/C) ledge, balcony and strata void area where applicable. Some units are mirror images of the apartment plans shown in the brochure. Please refer to the key plan for orientation. The plans are subject to change as may be approved by relevant authorities. All floor plans are approximate measurements only and are subject to government re-survey. The balcony shall not be enclosed unless with the approved balcony screen. For an illustration of the approved balcony screen, please refer to the diagram annexed hereto as "Annexure 1".

2 - BEDROOM + STUDY

TYPE B6
63 sq m / 678 sq ft

#06-02* to #12-02*
#06-09 to #12-09



N
KEY PLAN
Keyplan is not drawn to scale

*Mirror Image



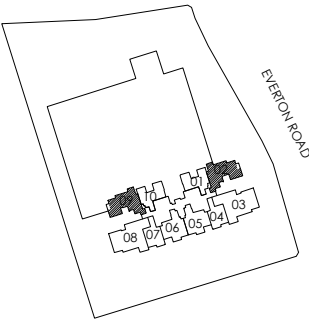
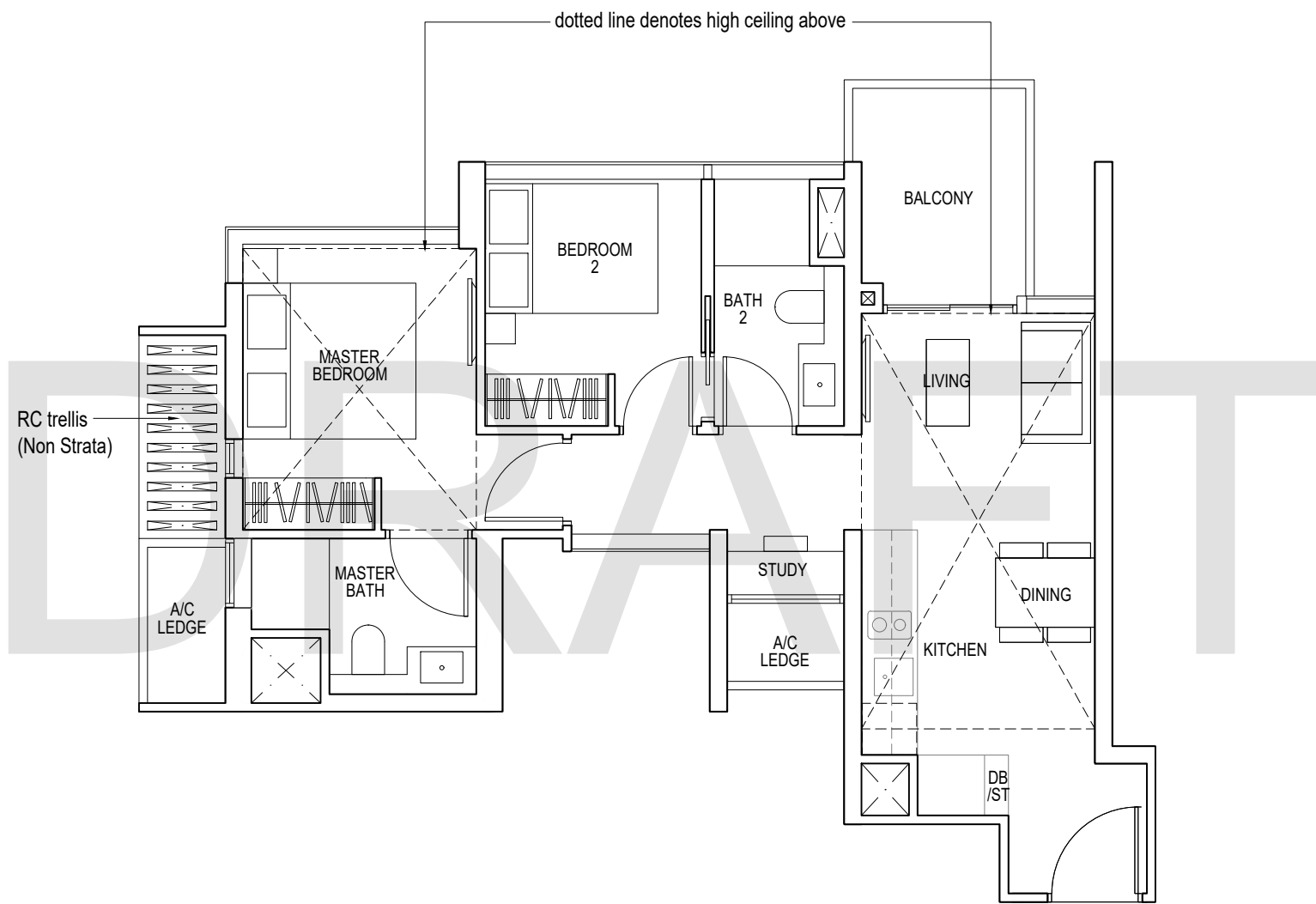
Area includes air-con (A/C) ledge, balcony and strata void area where applicable. Some units are mirror images of the apartment plans shown in the brochure. Please refer to the key plan for orientation. The plans are subject to change as may be approved by relevant authorities. All floor plans are approximate measurements only and are subject to government re-survey. The balcony shall not be enclosed unless with the approved balcony screen. For an illustration of the approved balcony screen, please refer to the diagram annexed hereto as "Annexure 1".

2 - BEDROOM + STUDY

TYPE B7

78 sq m / 840 sq ft

#13-02*, #13-09



N
KEY PLAN
Keyplan is not drawn to scale

*Mirror Image

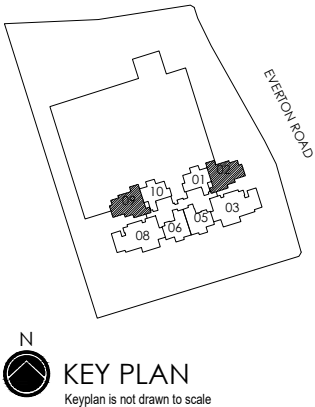
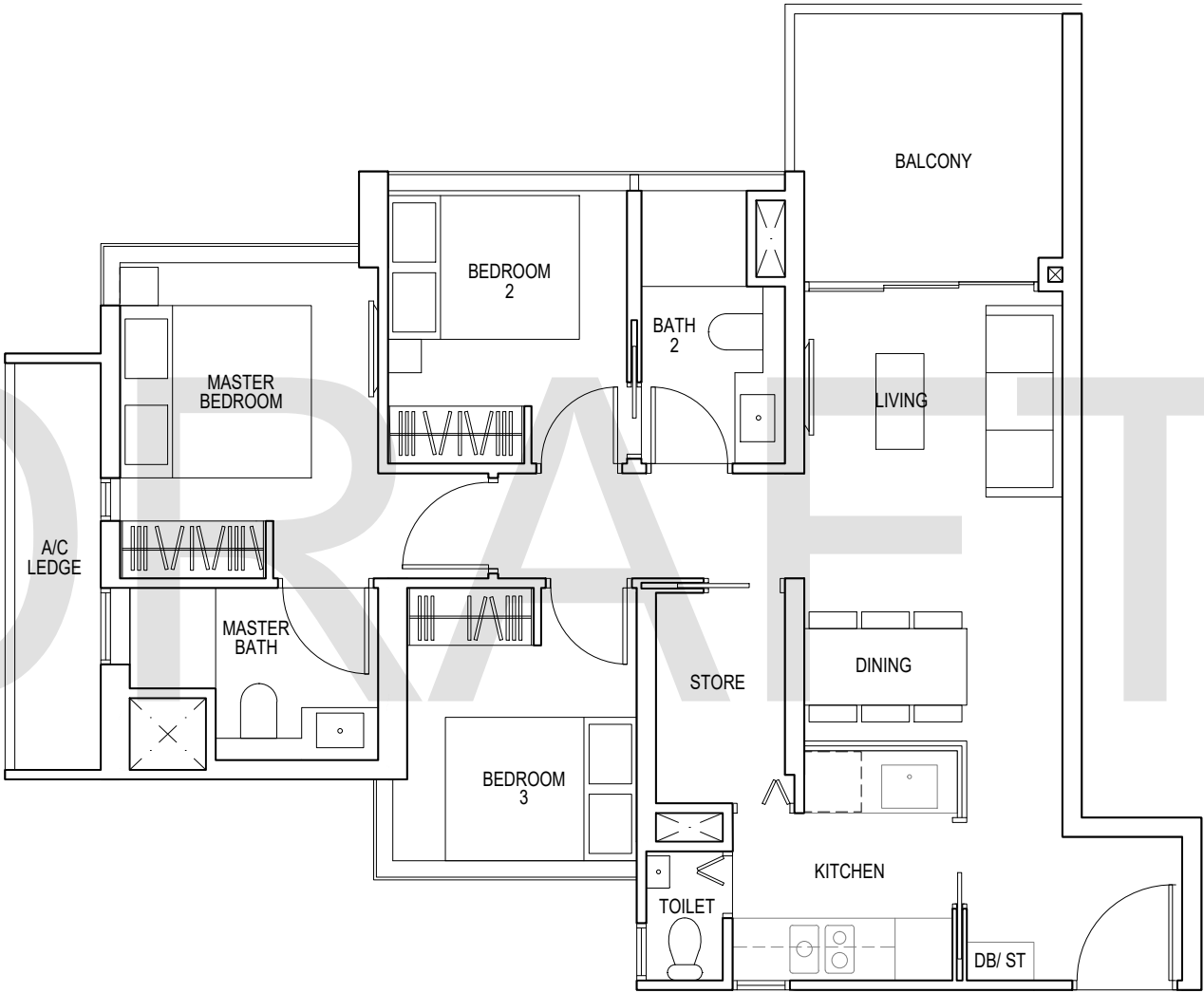


Area includes air-con (A/C) ledge, balcony and strata void area where applicable. Some units are mirror images of the apartment plans shown in the brochure. Please refer to the key plan for orientation. The plans are subject to change as may be approved by relevant authorities. All floor plans are approximate measurements only and are subject to government re-survey. The balcony shall not be enclosed unless with the approved balcony screen. For an illustration of the approved balcony screen, please refer to the diagram annexed hereto as "Annexure 1".

3 - BEDROOM

TYPE C1
85 sq m / 915 sq ft

- #15-02*to #22-02*
- #15-09 to #22-09
- #25-02*to #35-02*
- #25-09 to #35-09



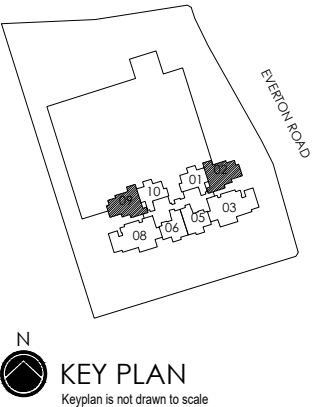
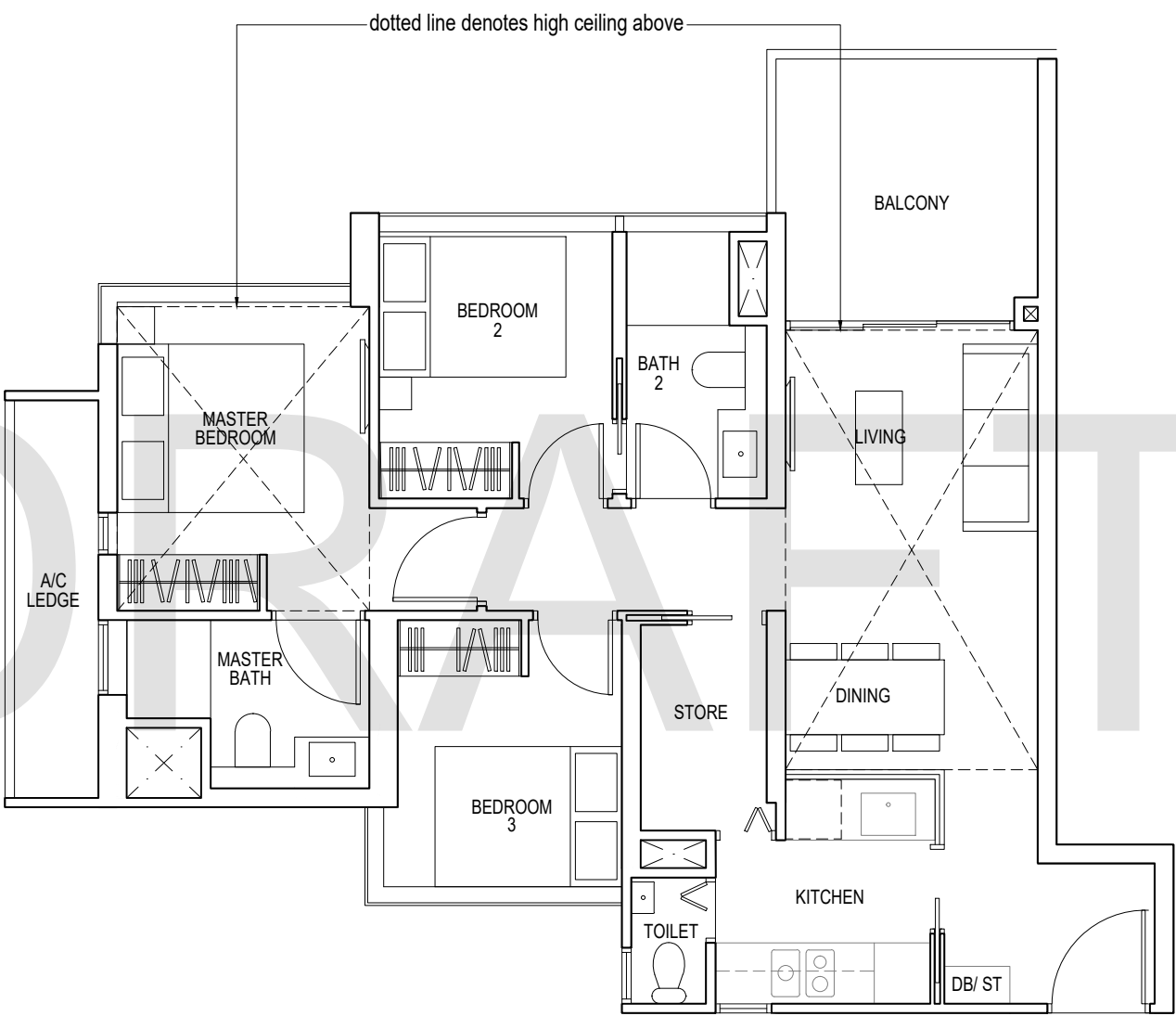
*Mirror Image



Area includes air-con (A/C) ledge, balcony and strata void area where applicable. Some units are mirror images of the apartment plans shown in the brochure. Please refer to the key plan for orientation. The plans are subject to change as may be approved by relevant authorities. All floor plans are approximate measurements only and are subject to government re-survey. The balcony shall not be enclosed unless with the approved balcony screen. For an illustration of the approved balcony screen, please refer to the diagram annexed hereto as "Annexure 1".

3 - BEDROOM
TYPE C2
99 sq m / 1066 sq ft

#23-02*, #23-09



*Mirror Image

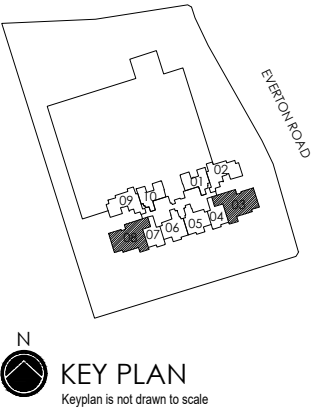
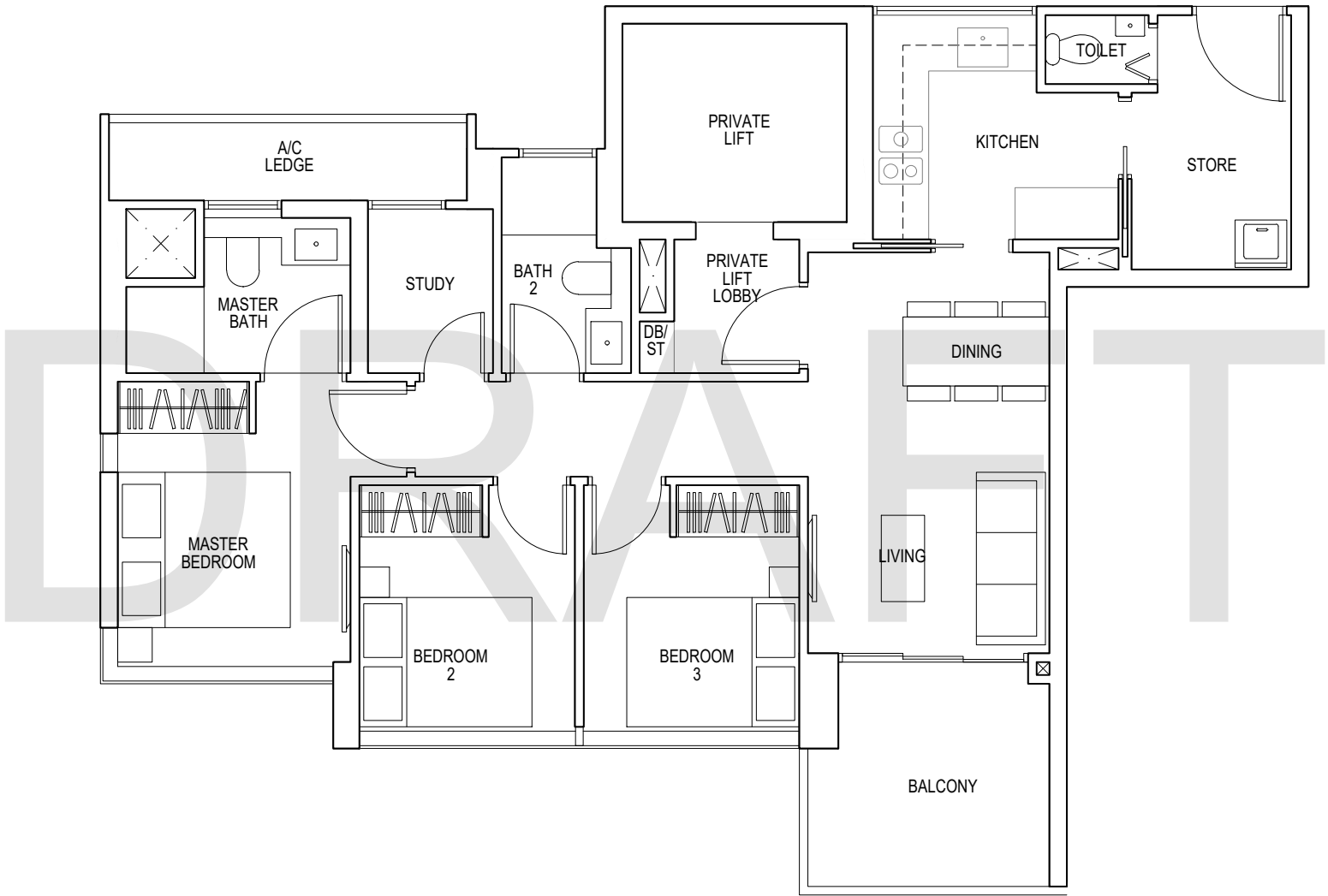


Area includes air-con (A/C) ledge, balcony and strata void area where applicable. Some units are mirror images of the apartment plans shown in the brochure. Please refer to the key plan for orientation. The plans are subject to change as may be approved by relevant authorities. All floor plans are approximate measurements only and are subject to government re-survey. The balcony shall not be enclosed unless with the approved balcony screen. For an illustration of the approved balcony screen, please refer to the diagram annexed hereto as "Annexure 1".

3 - BEDROOM + STUDY

TYPE C3
89 sq m / 958 sq ft

#06-03*to #12-03*
#06-08 to #12-08
#15-03*to #22-03*
#15-08 to #22-08



*Mirror Image



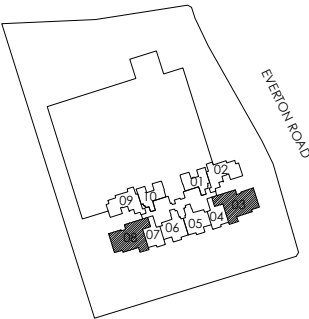
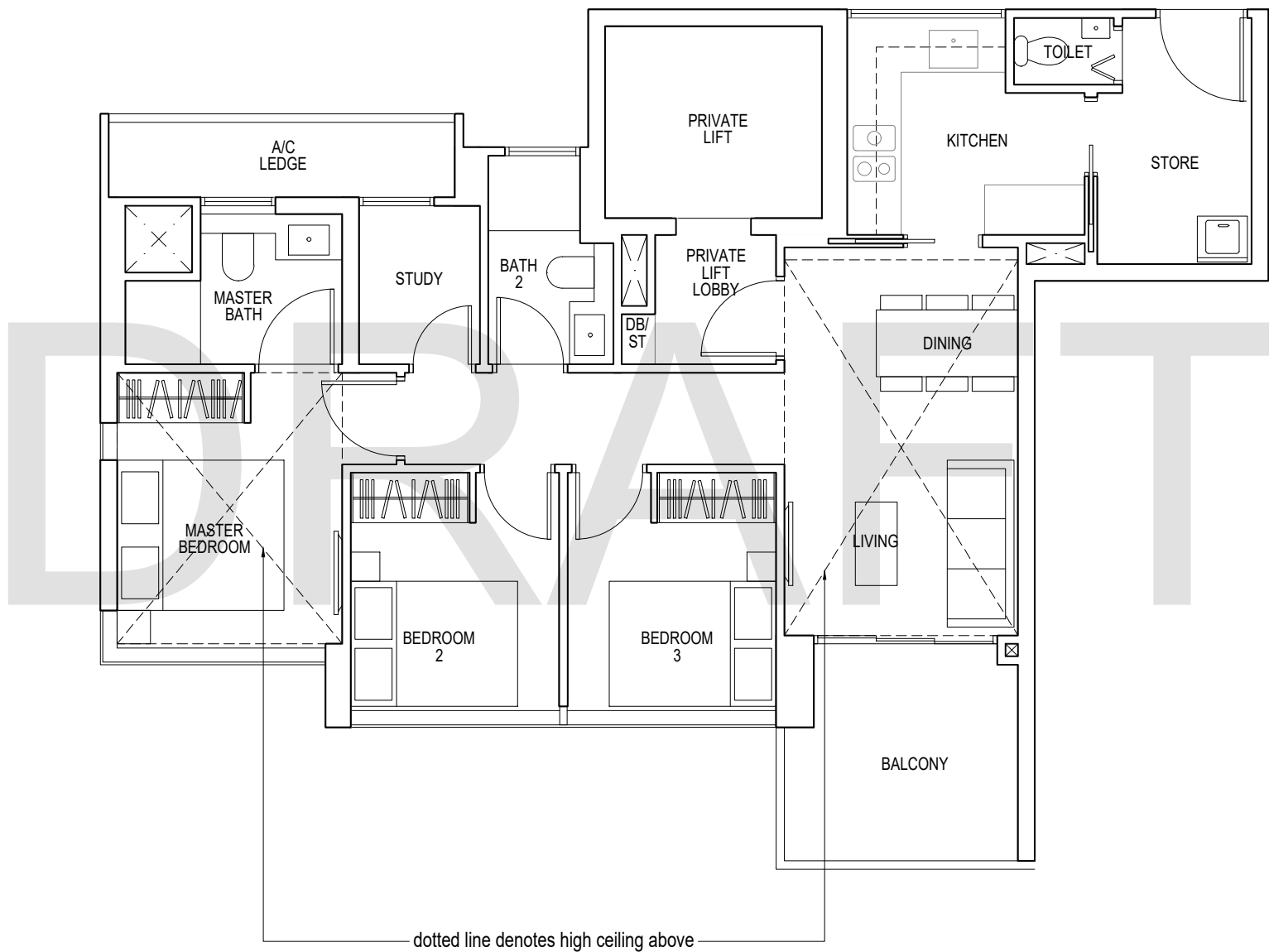
Area includes air-con (A/C) ledge, balcony and strata void area where applicable. Some units are mirror images of the apartment plans shown in the brochure. Please refer to the key plan for orientation. The plans are subject to change as may be approved by relevant authorities. All floor plans are approximate measurements only and are subject to government re-survey. The balcony shall not be enclosed unless with the approved balcony screen. For an illustration of the approved balcony screen, please refer to the diagram annexed hereto as "Annexure 1".

3 - BEDROOM + STUDY

TYPE C4

103 sq m / 1109 sq ft

#13-03*, #13-08, #23-03*, #23-08



N
KEY PLAN
Keyplan is not drawn to scale

*Mirror Image



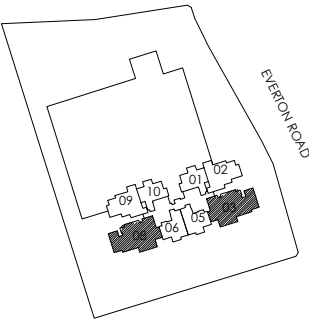
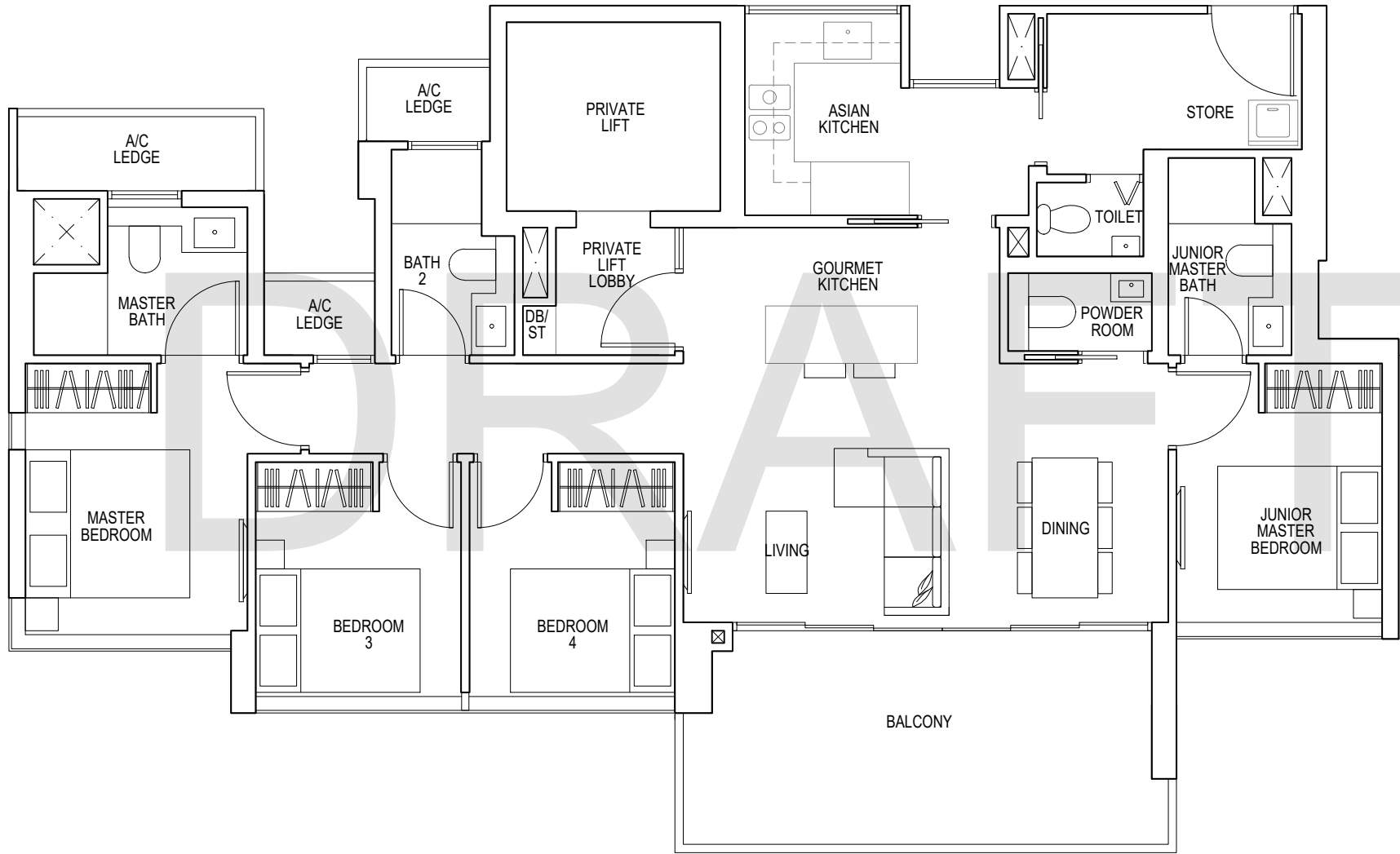
Area includes air-con (A/C) ledge, balcony and strata void area where applicable. Some units are mirror images of the apartment plans shown in the brochure. Please refer to the key plan for orientation. The plans are subject to change as may be approved by relevant authorities. All floor plans are approximate measurements only and are subject to government re-survey. The balcony shall not be enclosed unless with the approved balcony screen. For an illustration of the approved balcony screen, please refer to the diagram annexed hereto as "Annexure 1".

4 - BEDROOM

TYPE D1

125 sq m / 1346 sq ft

#25-03*to #35-03*
#25-08 to #35-08



N
KEY PLAN
Keyplan is not drawn to scale

*Mirror Image



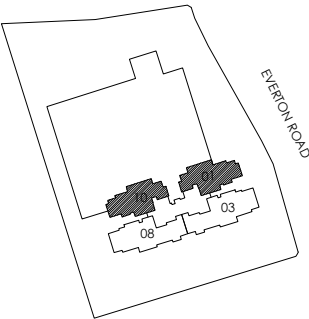
Area includes air-con (A/C) ledge, balcony and strata void area where applicable. Some units are mirror images of the apartment plans shown in the brochure. Please refer to the key plan for orientation. The plans are subject to change as may be approved by relevant authorities. All floor plans are approximate measurements only and are subject to government re-survey. The balcony shall not be enclosed unless with the approved balcony screen. For an illustration of the approved balcony screen, please refer to the diagram annexed hereto as "Annexure 1".

5 - BEDROOM

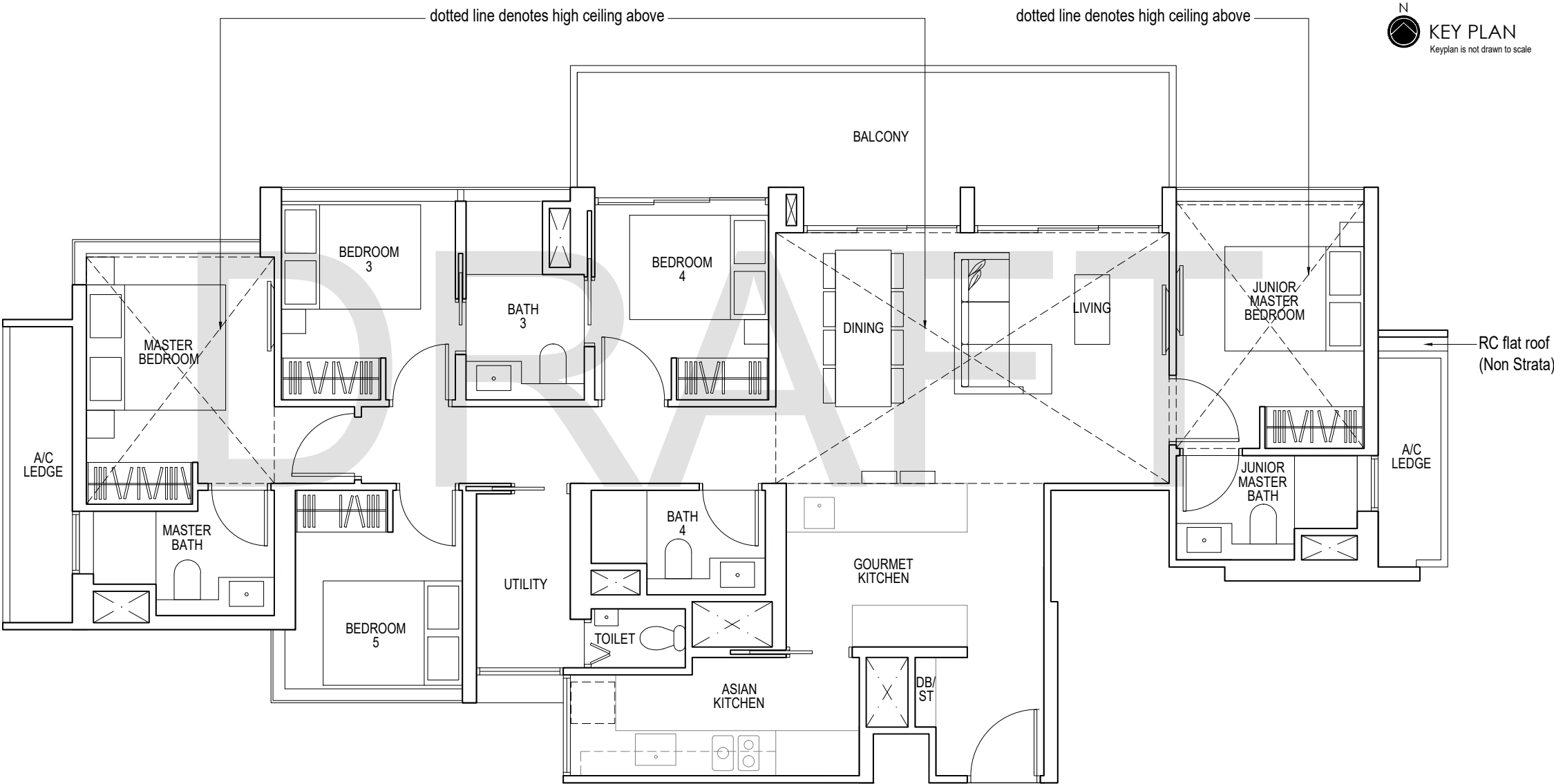
TYPE PH1

169 sq m / 1819 sq ft

#36-01*, #36-10



N
KEY PLAN
Keyplan is not drawn to scale



*Mirror Image



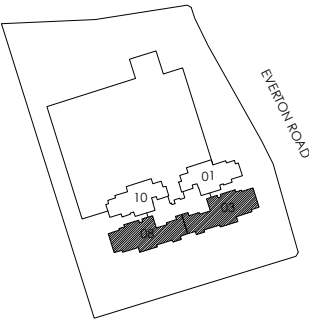
Area includes air-con (A/C) ledge, balcony and strata void area where applicable. Some units are mirror images of the apartment plans shown in the brochure. Please refer to the key plan for orientation. The plans are subject to change as may be approved by relevant authorities. All floor plans are approximate measurements only and are subject to government re-survey. The balcony shall not be enclosed unless with the approved balcony screen. For an illustration of the approved balcony screen, please refer to the diagram annexed hereto as "Annexure 1".

6 - BEDROOM

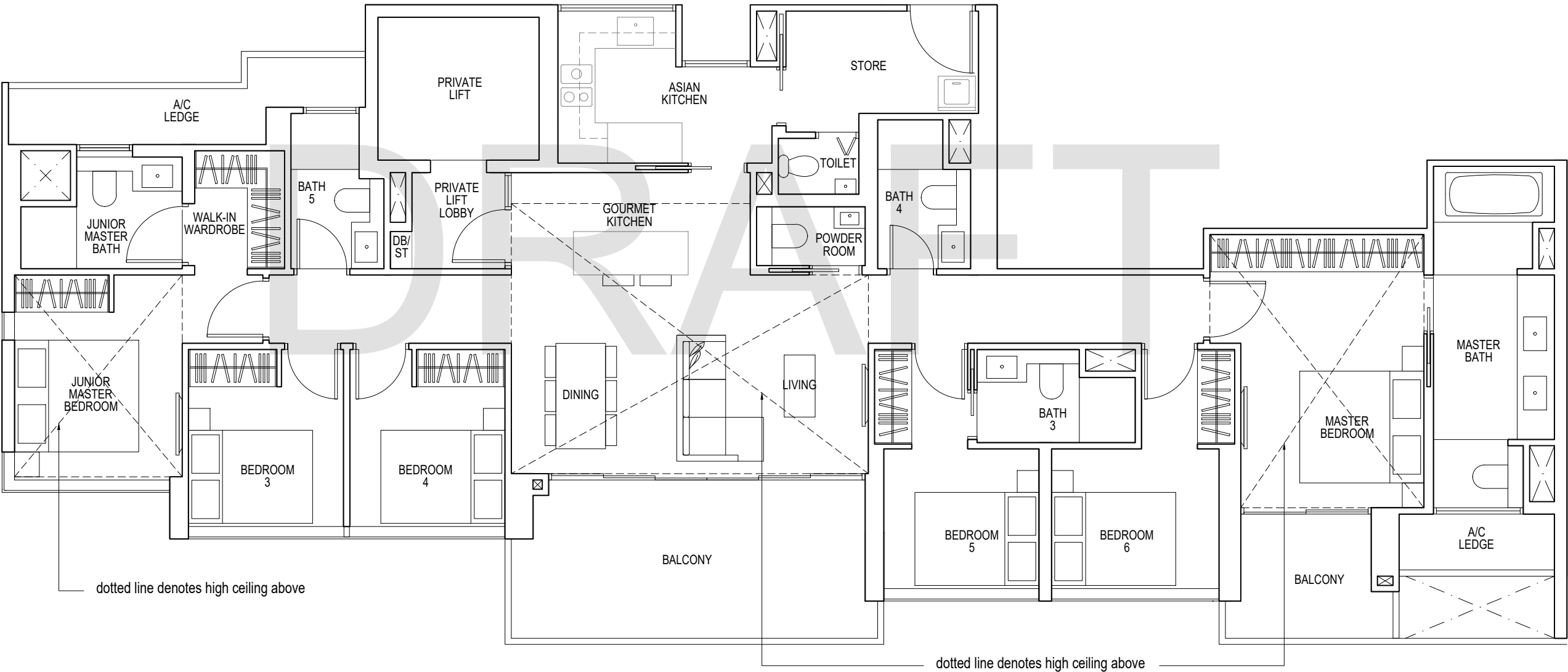
TYPE PH2

207 sq m / 2228 sq ft

#36-03*, #36-08



N
KEY PLAN
Keyplan is not drawn to scale



*Mirror Image



Area includes air-con (A/C) ledge, balcony and strata void area where applicable. Some units are mirror images of the apartment plans shown in the brochure. Please refer to the key plan for orientation. The plans are subject to change as may be approved by relevant authorities. All floor plans are approximate measurements only and are subject to government re-survey. The balcony shall not be enclosed unless with the approved balcony screen. For an illustration of the approved balcony screen, please refer to the diagram annexed hereto as "Annexure 1".