



M A R T I N  
M O D E R N

FLOORPLANS

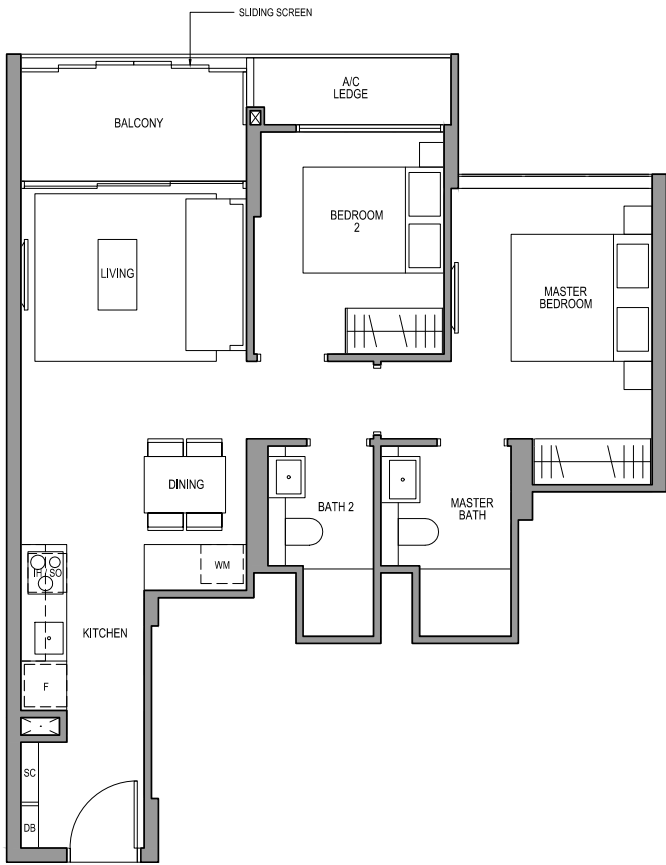


2 BEDROOM  
TYPE B1

71 SQM / 764 SQFT  
INCLUSIVE OF 6 SQM BALCONY & 3 SQM AC LEDGE

TOWER 10

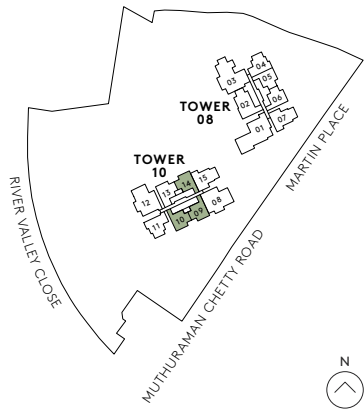
UNIT  
#02-09 TO #29-09  
#02-10\* TO #29-10\*  
#02-14\* TO #29-14\*  
\* MIRROR IMAGE



0 1M 3M 5M

F	FRIDGE	SC	SHOE CABINET	WD	WARMER DRAWER
DW	DISHWASHER	WCH	WINE CHILLER	CO	CONVENTIONAL OVEN
IH	INDUCTION HOB	WM	WASHER CUM DRYER	DB	DISTRIBUTION BOARD
GH	GAS HOB	SO	STEAM OVEN		

All plans are subjected to amendments as may be approved by the relevant authorities. Floor areas are approximate measurements and are subjected to final survey. BP approval number: A1709-00014-2016-BP01 dated: 4 May 2017.

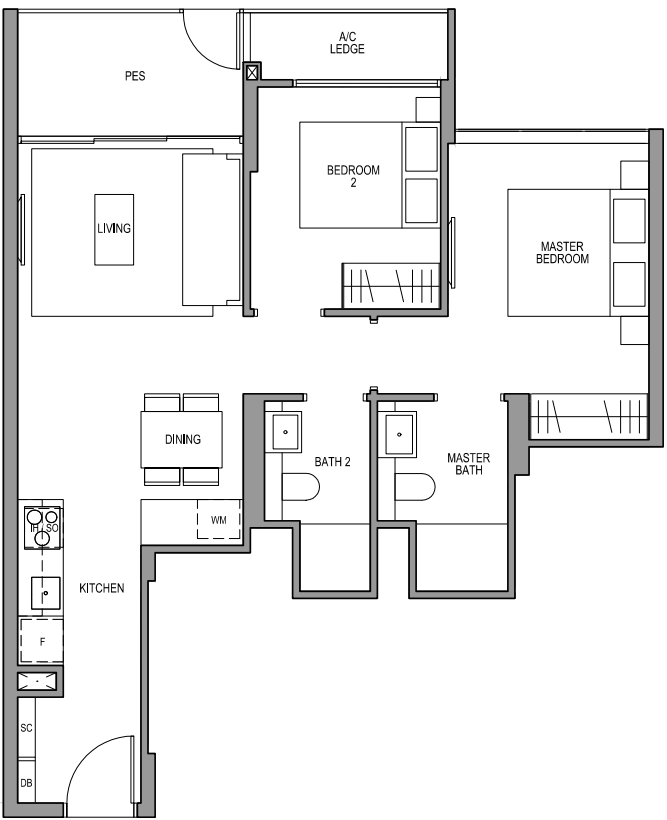


2 BEDROOM  
TYPE B1-G

71 SQM / 764 SQFT  
INCLUSIVE OF 6 SQM PES & 3 SQM AC LEDGE

TOWER 10

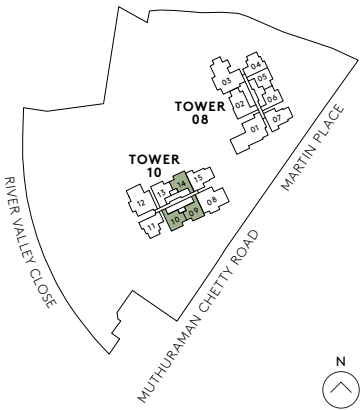
UNIT  
#01-09  
#01-10\*  
#01-14\*  
\* MIRROR IMAGE



0 1M 3M 5M

F	FRIDGE	SC	SHOE CABINET	WD	WARMER DRAWER
DW	DISHWASHER	WCH	WINE CHILLER	CO	CONVENTIONAL OVEN
IH	INDUCTION HOB	WM	WASHER CUM DRYER	DB	DISTRIBUTION BOARD
GH	GAS HOB	SO	STEAM OVEN		

All plans are subjected to amendments as may be approved by the relevant authorities. Floor areas are approximate measurements and are subjected to final survey. BP approval number: A1709-00014-2016-BP01 dated: 4 May 2017.

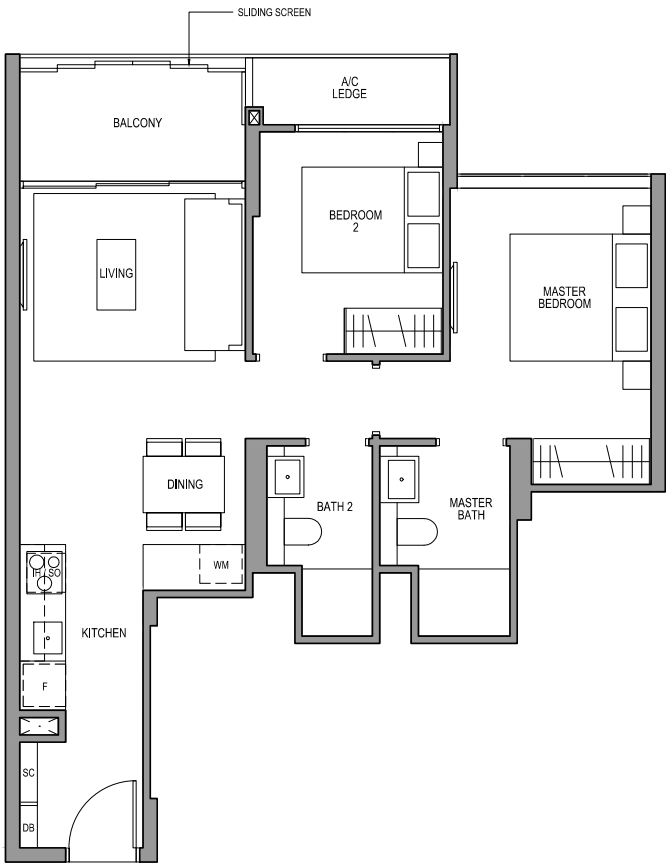


2 BEDROOM  
TYPE B1-R

71 SQM / 764 SQFT  
INCLUSIVE OF 6 SQM BALCONY & 3 SQM AC LEDGE

TOWER 10

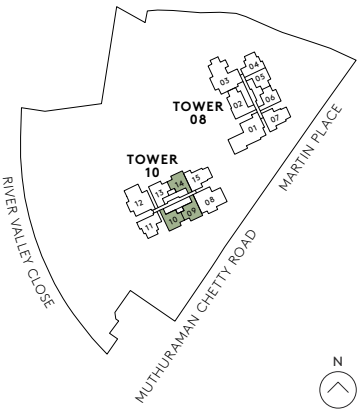
UNIT  
#30-09  
#30-10\*  
#30-14\*  
\* MIRROR IMAGE



0 1M 3M 5M

F	FRIDGE	SC	SHOE CABINET	WD	WARMER DRAWER
DW	DISHWASHER	WCH	WINE CHILLER	CO	CONVENTIONAL OVEN
IH	INDUCTION HOB	WM	WASHER CUM DRYER	DB	DISTRIBUTION BOARD
GH	GAS HOB	SO	STEAM OVEN		

All plans are subjected to amendments as may be approved by the relevant authorities. Floor areas are approximate measurements and are subjected to final survey. BP approval number: A1709-00014-2016-BP01 dated: 4 May 2017.

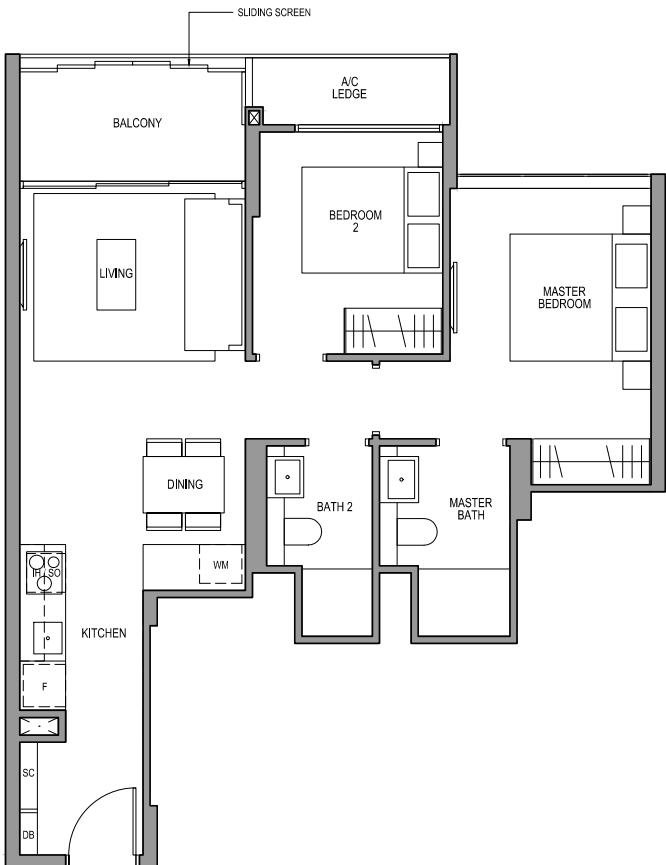


2 BEDROOM  
TYPE B1a

71 SQM / 764 SQFT  
INCLUSIVE OF 6 SQM BALCONY & 3 SQM AC LEDGE

TOWER 08

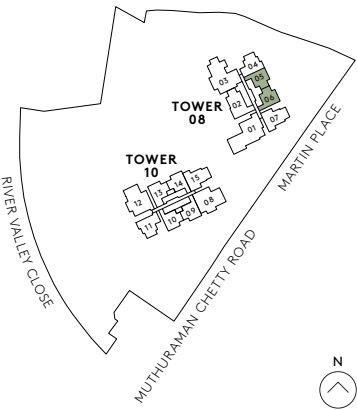
UNIT  
#02-05 TO #29-05  
#02-06\* TO #29-06\*  
\* MIRROR IMAGE



0 1M 3M 5M

F	FRIDGE	SC	SHOE CABINET	WD	WARMER DRAWER
DW	DISHWASHER	WCH	WINE CHILLER	CO	CONVENTIONAL OVEN
IH	INDUCTION HOB	WM	WASHER CUM DRYER	DB	DISTRIBUTION BOARD
GH	GAS HOB	SO	STEAM OVEN		

All plans are subjected to amendments as may be approved by the relevant authorities. Floor areas are approximate measurements and are subjected to final survey. BP approval number: A1709-00014-2016-BP01 dated: 4 May 2017.

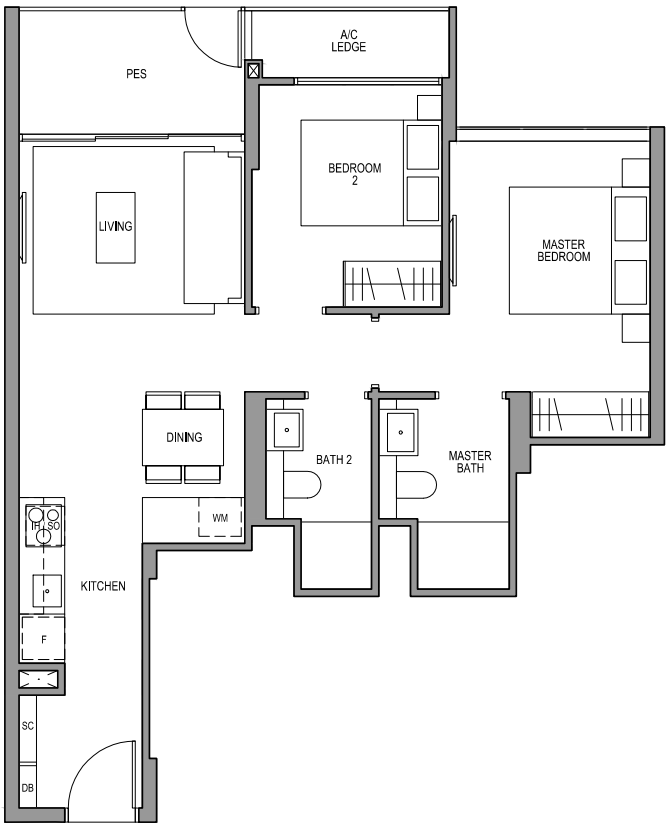


2 BEDROOM  
TYPE B1a - G

71 SQM / 764 SQFT  
INCLUSIVE OF 6 SQM PES & 3 SQM AC LEDGE

TOWER 08

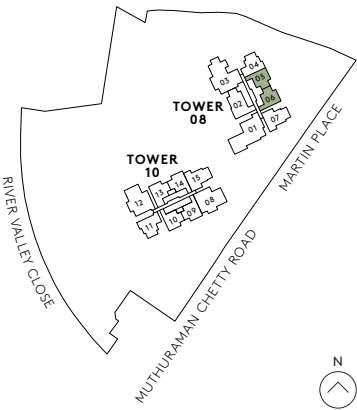
UNIT  
#01-05  
#01-06\*  
\* MIRROR IMAGE



0 1M 3M 5M

- |    |               |     |                  |    |                    |
|----|---------------|-----|------------------|----|--------------------|
| F  | FRIDGE        | SC  | SHOE CABINET     | WD | WARMER DRAWER      |
| DW | DISHWASHER    | WCH | WINE CHILLER     | CO | CONVENTIONAL OVEN  |
| IH | INDUCTION HOB | WM  | WASHER CUM DRYER | DB | DISTRIBUTION BOARD |
| GH | GAS HOB       | SO  | STEAM OVEN       |    |                    |

All plans are subjected to amendments as may be approved by the relevant authorities. Floor areas are approximate measurements and are subjected to final survey. BP approval number: A1709-00014-2016-BP01 dated: 4 May 2017.

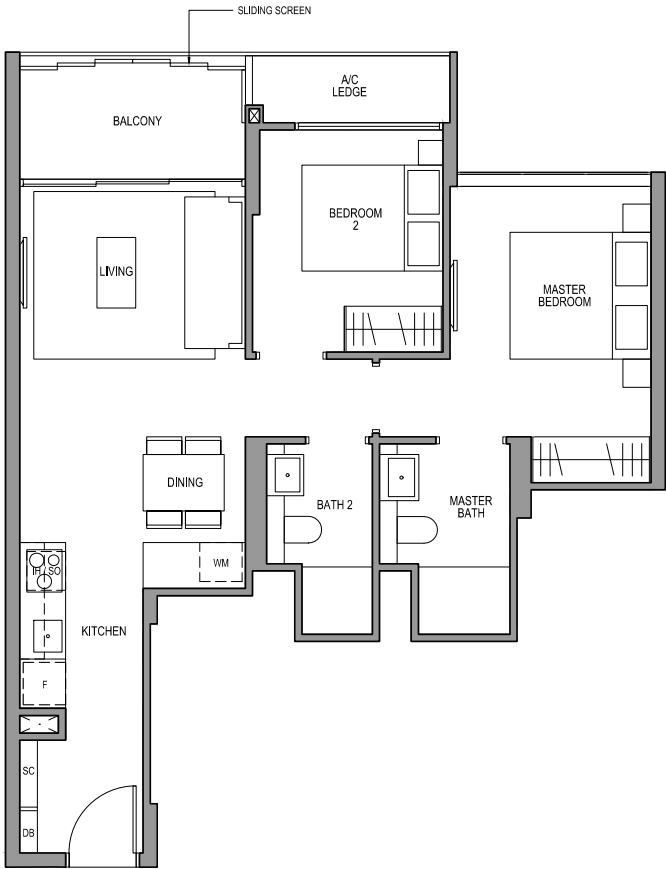


2 BEDROOM  
TYPE B1a - R

71 SQM / 764 SQFT  
INCLUSIVE OF 6 SQM BALCONY & 3 SQM AC LEDGE

TOWER 08

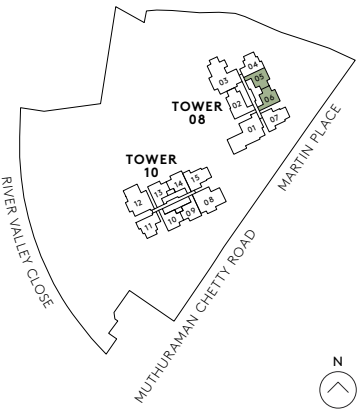
UNIT  
#30-05  
#30-06\*  
\* MIRROR IMAGE



0 1M 3M 5M

- |    |               |     |                  |    |                    |
|----|---------------|-----|------------------|----|--------------------|
| F  | FRIDGE        | SC  | SHOE CABINET     | WD | WARMER DRAWER      |
| DW | DISHWASHER    | WCH | WINE CHILLER     | CO | CONVENTIONAL OVEN  |
| IH | INDUCTION HOB | WM  | WASHER CUM DRYER | DB | DISTRIBUTION BOARD |
| GH | GAS HOB       | SO  | STEAM OVEN       |    |                    |

All plans are subjected to amendments as may be approved by the relevant authorities. Floor areas are approximate measurements and are subjected to final survey. BP approval number: A1709-00014-2016-BP01 dated: 4 May 2017.



2 BEDROOM + STUDY  
TYPE B2S

79 SQM / 850 SQFT  
INCLUSIVE OF 7 SQM BALCONY & 3 SQM AC LEDGE

TOWER 10

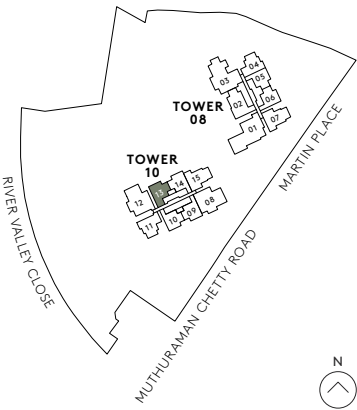
UNIT  
#02-13 TO #29-13



0 1M 3M 5M

- |    |               |     |                  |    |                    |
|----|---------------|-----|------------------|----|--------------------|
| F  | FRIDGE        | SC  | SHOE CABINET     | WD | WARMER DRAWER      |
| DW | DISHWASHER    | WCH | WINE CHILLER     | CO | CONVENTIONAL OVEN  |
| IH | INDUCTION HOB | WM  | WASHER CUM DRYER | DB | DISTRIBUTION BOARD |
| GH | GAS HOB       | SO  | STEAM OVEN       |    |                    |

All plans are subjected to amendments as may be approved by the relevant authorities. Floor areas are approximate measurements and are subjected to final survey. BP approval number: A1709-00014-2016-BP01 dated: 4 May 2017.



2 BEDROOM + STUDY  
TYPE B2S-G

79 SQM / 850 SQFT  
INCLUSIVE OF 7 SQM PES & 3 SQM AC LEDGE

TOWER 10

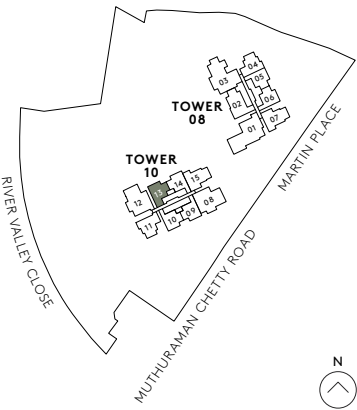
UNIT  
#01-13



0 1M 3M 5M

- |    |               |     |                  |    |                    |
|----|---------------|-----|------------------|----|--------------------|
| F  | FRIDGE        | SC  | SHOE CABINET     | WD | WARMER DRAWER      |
| DW | DISHWASHER    | WCH | WINE CHILLER     | CO | CONVENTIONAL OVEN  |
| IH | INDUCTION HOB | WM  | WASHER CUM DRYER | DB | DISTRIBUTION BOARD |
| GH | GAS HOB       | SO  | STEAM OVEN       |    |                    |

All plans are subjected to amendments as may be approved by the relevant authorities. Floor areas are approximate measurements and are subjected to final survey. BP approval number: A1709-00014-2016-BP01 dated: 4 May 2017.



2 BEDROOM + STUDY  
TYPE B2S-R

79 SQM / 850 SQFT  
INCLUSIVE OF 7 SQM BALCONY & 3 SQM AC LEDGE

TOWER 10

UNIT

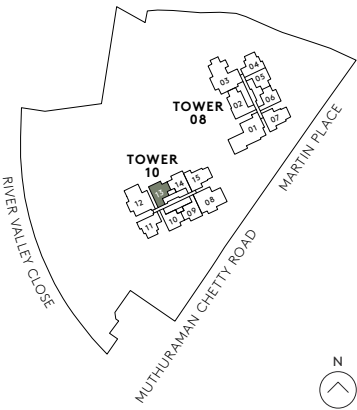
#30-13



0 1M 3M 5M

- |    |               |     |                  |    |                    |
|----|---------------|-----|------------------|----|--------------------|
| F  | FRIDGE        | SC  | SHOE CABINET     | WD | WARMER DRAWER      |
| DW | DISHWASHER    | WCH | WINE CHILLER     | CO | CONVENTIONAL OVEN  |
| IH | INDUCTION HOB | WM  | WASHER CUM DRYER | DB | DISTRIBUTION BOARD |
| GH | GAS HOB       | SO  | STEAM OVEN       |    |                    |

All plans are subjected to amendments as may be approved by the relevant authorities. Floor areas are approximate measurements and are subjected to final survey. BP approval number: A1709-00014-2016-BP01 dated: 4 May 2017.



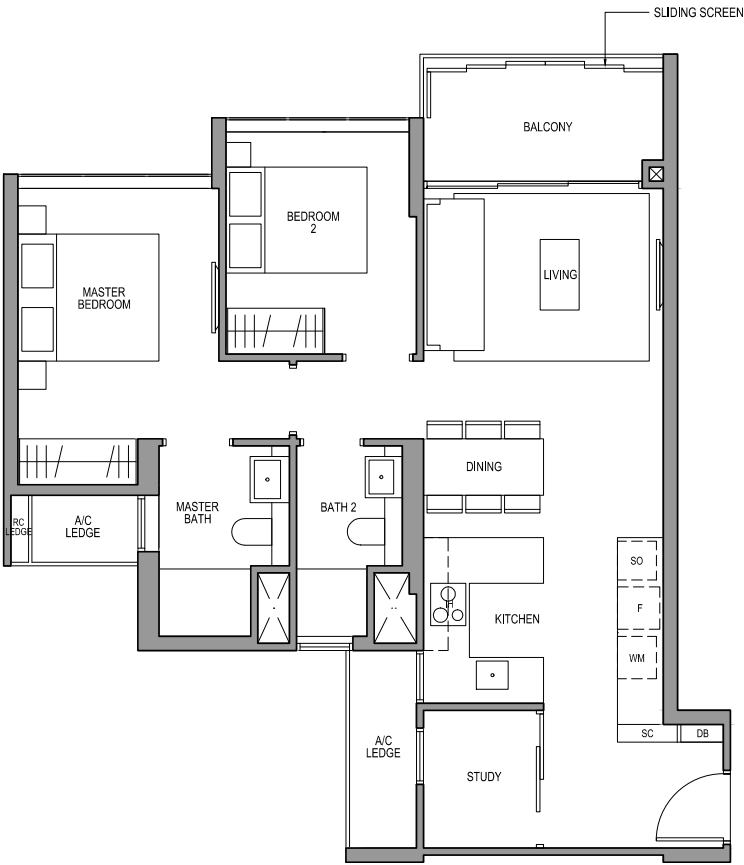
2 BEDROOM + STUDY  
TYPE B3S

82 SQM / 883 SQFT  
INCLUSIVE OF 6 SQM BALCONY & 5 SQM AC LEDGE

TOWER 10

UNIT

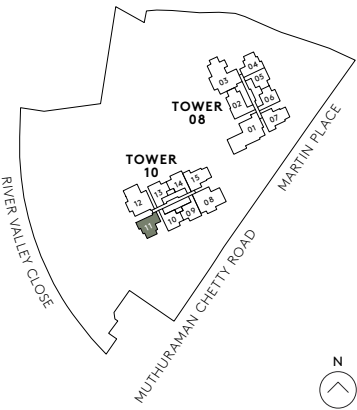
#02-11 to #29-11



0 1M 3M 5M

- |    |               |     |                  |    |                    |
|----|---------------|-----|------------------|----|--------------------|
| F  | FRIDGE        | SC  | SHOE CABINET     | WD | WARMER DRAWER      |
| DW | DISHWASHER    | WCH | WINE CHILLER     | CO | CONVENTIONAL OVEN  |
| IH | INDUCTION HOB | WM  | WASHER CUM DRYER | DB | DISTRIBUTION BOARD |
| GH | GAS HOB       | SO  | STEAM OVEN       |    |                    |

All plans are subjected to amendments as may be approved by the relevant authorities. Floor areas are approximate measurements and are subjected to final survey. BP approval number: A1709-00014-2016-BP01 dated: 4 May 2017.



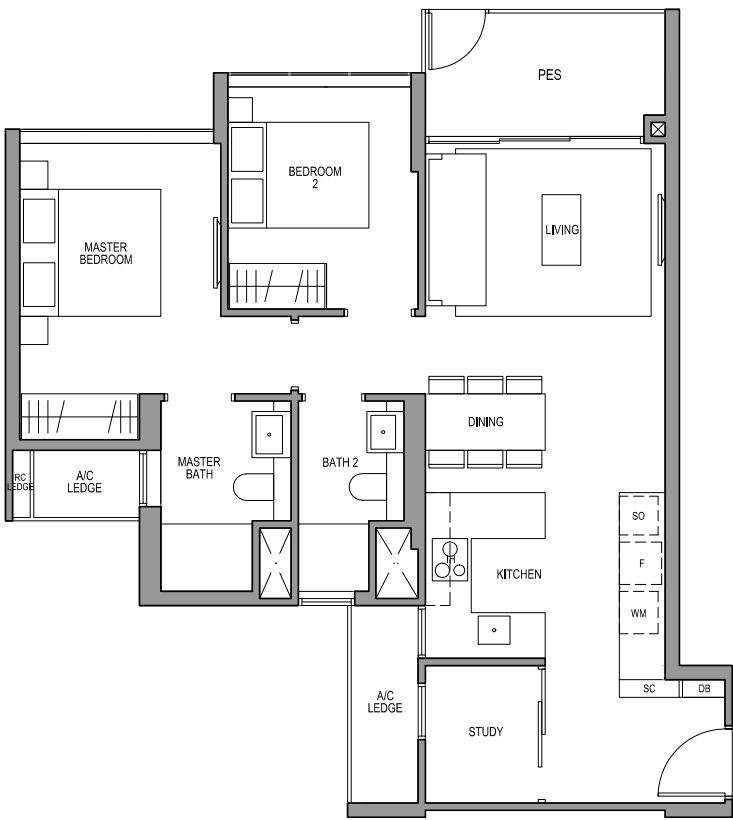
2 BEDROOM + STUDY  
TYPE B3S-G

82 SQM / 883 SQFT  
INCLUSIVE OF 6 SQM PES & 5 SQM AC LEDGE

TOWER 10

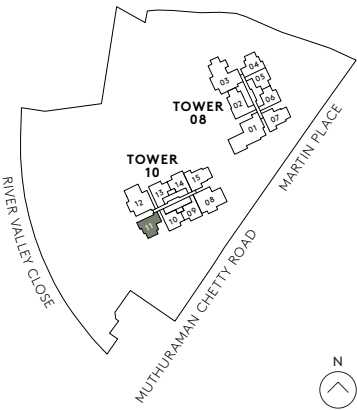
UNIT

#01-11



- |    |               |     |                  |    |                    |
|----|---------------|-----|------------------|----|--------------------|
| F  | FRIDGE        | SC  | SHOE CABINET     | WD | WARMER DRAWER      |
| DW | DISHWASHER    | WCH | WINE CHILLER     | CO | CONVENTIONAL OVEN  |
| IH | INDUCTION HOB | WM  | WASHER CUM DRYER | DB | DISTRIBUTION BOARD |
| GH | GAS HOB       | SO  | STEAM OVEN       |    |                    |

All plans are subjected to amendments as may be approved by the relevant authorities. Floor areas are approximate measurements and are subjected to final survey. BP approval number: A1709-00014-2016-BP01 dated: 4 May 2017.



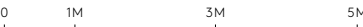
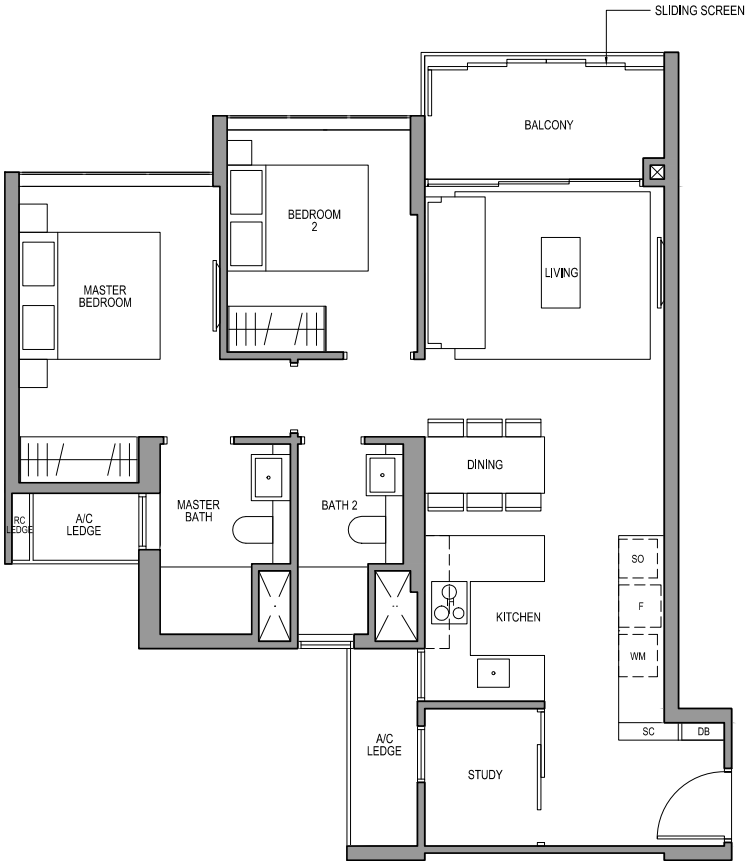
2 BEDROOM + STUDY  
TYPE B3S-R

82 SQM / 883 SQFT  
INCLUSIVE OF 6 SQM BALCONY & 5 SQM AC LEDGE

TOWER 10

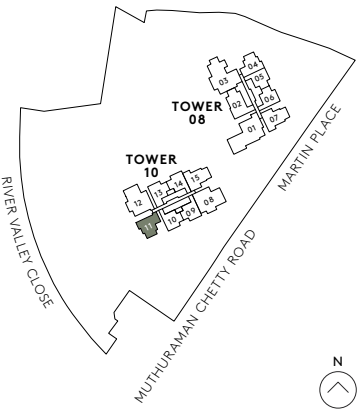
UNIT

#30-11



- |    |               |     |                  |    |                    |
|----|---------------|-----|------------------|----|--------------------|
| F  | FRIDGE        | SC  | SHOE CABINET     | WD | WARMER DRAWER      |
| DW | DISHWASHER    | WCH | WINE CHILLER     | CO | CONVENTIONAL OVEN  |
| IH | INDUCTION HOB | WM  | WASHER CUM DRYER | DB | DISTRIBUTION BOARD |
| GH | GAS HOB       | SO  | STEAM OVEN       |    |                    |

All plans are subjected to amendments as may be approved by the relevant authorities. Floor areas are approximate measurements and are subjected to final survey. BP approval number: A1709-00014-2016-BP01 dated: 4 May 2017.



2 BEDROOM + STUDY  
TYPE B4S

81 SQM / 872 SQFT  
INCLUSIVE OF 6 SQM BALCONY & 5 SQM AC LEDGE

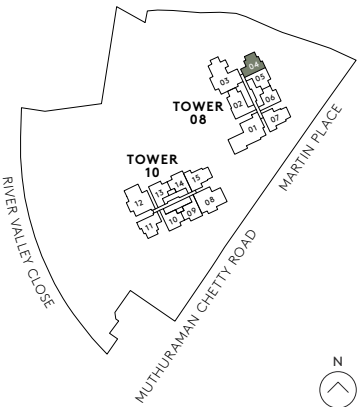
TOWER 08

UNIT  
#02-04 TO #29-04



- |    |               |     |                  |    |                    |
|----|---------------|-----|------------------|----|--------------------|
| F  | FRIDGE        | SC  | SHOE CABINET     | WD | WARMER DRAWER      |
| DW | DISHWASHER    | WCH | WINE CHILLER     | CO | CONVENTIONAL OVEN  |
| IH | INDUCTION HOB | WM  | WASHER CUM DRYER | DB | DISTRIBUTION BOARD |
| GH | GAS HOB       | SO  | STEAM OVEN       |    |                    |

All plans are subjected to amendments as may be approved by the relevant authorities. Floor areas are approximate measurements and are subjected to final survey. BP approval number: A1709-00014-2016-BP01 dated: 4 May 2017.



2 BEDROOM + STUDY  
TYPE B4S-G

81 SQM / 872 SQFT  
INCLUSIVE OF 6 SQM PES & 5 SQM AC LEDGE

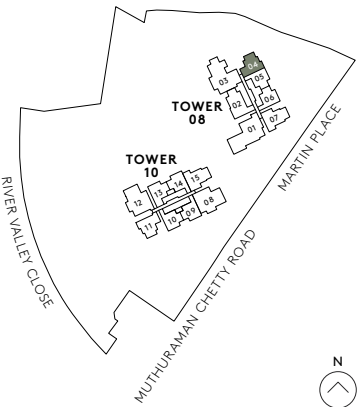
TOWER 08

UNIT  
#01-04



- |    |               |     |                  |    |                    |
|----|---------------|-----|------------------|----|--------------------|
| F  | FRIDGE        | SC  | SHOE CABINET     | WD | WARMER DRAWER      |
| DW | DISHWASHER    | WCH | WINE CHILLER     | CO | CONVENTIONAL OVEN  |
| IH | INDUCTION HOB | WM  | WASHER CUM DRYER | DB | DISTRIBUTION BOARD |
| GH | GAS HOB       | SO  | STEAM OVEN       |    |                    |

All plans are subjected to amendments as may be approved by the relevant authorities. Floor areas are approximate measurements and are subjected to final survey. BP approval number: A1709-00014-2016-BP01 dated: 4 May 2017.





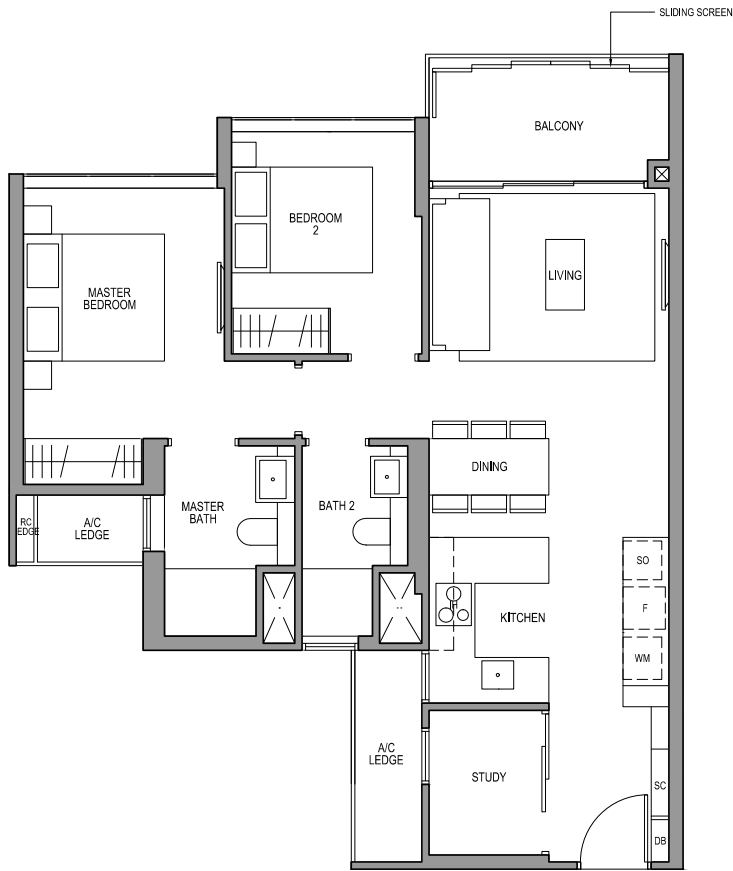
2 BEDROOM + STUDY  
TYPE B4S-R

81 SQM / 872 SQFT  
INCLUSIVE OF 6 SQM BALCONY & 5 SQM AC LEDGE

TOWER 08

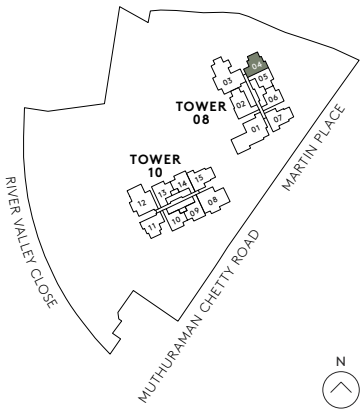
UNIT

#30-04



- |    |               |     |                  |    |                    |
|----|---------------|-----|------------------|----|--------------------|
| F  | FRIDGE        | SC  | SHOE CABINET     | WD | WARMER DRAWER      |
| DW | DISHWASHER    | WCH | WINE CHILLER     | CO | CONVENTIONAL OVEN  |
| IH | INDUCTION HOB | WM  | WASHER CUM DRYER | DB | DISTRIBUTION BOARD |
| GH | GAS HOB       | SO  | STEAM OVEN       |    |                    |

All plans are subjected to amendments as may be approved by the relevant authorities. Floor areas are approximate measurements and are subjected to final survey. BP approval number: A1709-00014-2016-BP01 dated: 4 May 2017.



3 BEDROOM  
TYPE C1

94 SQM / 1012 SQFT  
INCLUSIVE OF 7 SQM BALCONY & 5 SQM AC LEDGE

TOWER 10

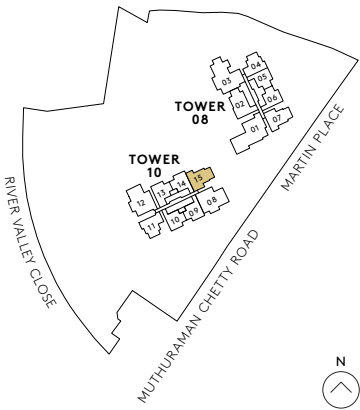
UNIT

#02-15 TO #29-15



- |    |               |     |                  |    |                    |
|----|---------------|-----|------------------|----|--------------------|
| F  | FRIDGE        | SC  | SHOE CABINET     | WD | WARMER DRAWER      |
| DW | DISHWASHER    | WCH | WINE CHILLER     | CO | CONVENTIONAL OVEN  |
| IH | INDUCTION HOB | WM  | WASHER CUM DRYER | DB | DISTRIBUTION BOARD |
| GH | GAS HOB       | SO  | STEAM OVEN       |    |                    |

All plans are subjected to amendments as may be approved by the relevant authorities. Floor areas are approximate measurements and are subjected to final survey. BP approval number: A1709-00014-2016-BP01 dated: 4 May 2017.



3 BEDROOM  
TYPE C1-G

94 SQM / 1012 SQFT  
INCLUSIVE OF 7 SQM PES & 5 SQM AC LEDGE

TOWER 10

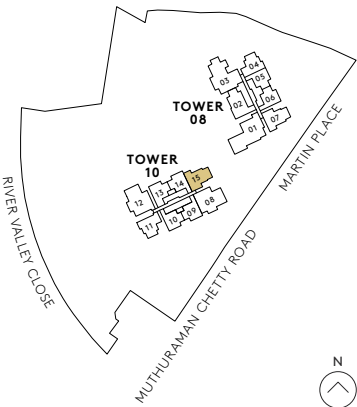
UNIT  
#01-15



0 1M 3M 5M

- |    |               |     |                  |    |                    |
|----|---------------|-----|------------------|----|--------------------|
| F  | FRIDGE        | SC  | SHOE CABINET     | WD | WARMER DRAWER      |
| DW | DISHWASHER    | WCH | WINE CHILLER     | CO | CONVENTIONAL OVEN  |
| IH | INDUCTION HOB | WM  | WASHER CUM DRYER | DB | DISTRIBUTION BOARD |
| GH | GAS HOB       | SO  | STEAM OVEN       |    |                    |

All plans are subjected to amendments as may be approved by the relevant authorities. Floor areas are approximate measurements and are subjected to final survey. BP approval number: A1709-00014-2016-BP01 dated: 4 May 2017.



3 BEDROOM  
TYPE C1-R

94 SQM / 1012 SQFT  
INCLUSIVE OF 7 SQM BALCONY & 5 SQM AC LEDGE

TOWER 10

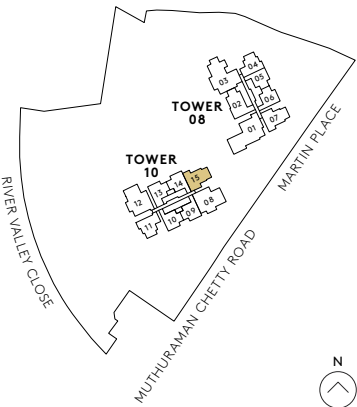
UNIT  
#30-15



0 1M 3M 5M

- |    |               |     |                  |    |                    |
|----|---------------|-----|------------------|----|--------------------|
| F  | FRIDGE        | SC  | SHOE CABINET     | WD | WARMER DRAWER      |
| DW | DISHWASHER    | WCH | WINE CHILLER     | CO | CONVENTIONAL OVEN  |
| IH | INDUCTION HOB | WM  | WASHER CUM DRYER | DB | DISTRIBUTION BOARD |
| GH | GAS HOB       | SO  | STEAM OVEN       |    |                    |

All plans are subjected to amendments as may be approved by the relevant authorities. Floor areas are approximate measurements and are subjected to final survey. BP approval number: A1709-00014-2016-BP01 dated: 4 May 2017.



3 BEDROOM  
TYPE C 2

94 SQM / 1012 SQFT  
INCLUSIVE OF 7 SQM BALCONY & 5 SQM AC LEDGE

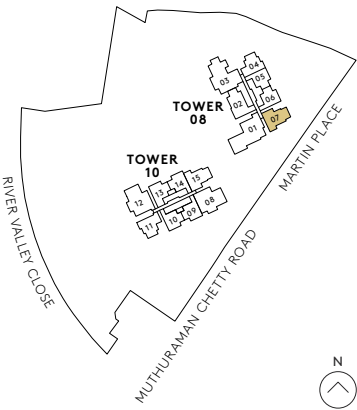
TOWER 08

UNIT  
#02-07 TO #29-07



- |    |               |     |                  |    |                    |
|----|---------------|-----|------------------|----|--------------------|
| F  | FRIDGE        | SC  | SHOE CABINET     | WD | WARMER DRAWER      |
| DW | DISHWASHER    | WCH | WINE CHILLER     | CO | CONVENTIONAL OVEN  |
| IH | INDUCTION HOB | WM  | WASHER CUM DRYER | DB | DISTRIBUTION BOARD |
| GH | GAS HOB       | SO  | STEAM OVEN       |    |                    |

All plans are subjected to amendments as may be approved by the relevant authorities. Floor areas are approximate measurements and are subjected to final survey. BP approval number: A1709-00014-2016-BP01 dated: 4 May 2017.



3 BEDROOM  
TYPE C 2 - G

94 SQM / 1012 SQFT  
INCLUSIVE OF 7 SQM PES & 5 SQM AC LEDGE

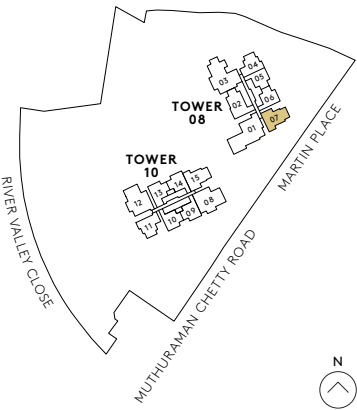
TOWER 08

UNIT  
#01-07



- |    |               |     |                  |    |                    |
|----|---------------|-----|------------------|----|--------------------|
| F  | FRIDGE        | SC  | SHOE CABINET     | WD | WARMER DRAWER      |
| DW | DISHWASHER    | WCH | WINE CHILLER     | CO | CONVENTIONAL OVEN  |
| IH | INDUCTION HOB | WM  | WASHER CUM DRYER | DB | DISTRIBUTION BOARD |
| GH | GAS HOB       | SO  | STEAM OVEN       |    |                    |

All plans are subjected to amendments as may be approved by the relevant authorities. Floor areas are approximate measurements and are subjected to final survey. BP approval number: A1709-00014-2016-BP01 dated: 4 May 2017.



3 BEDROOM  
TYPE C2-R

94 SQM / 1012 SQFT  
INCLUSIVE OF 7 SQM BALCONY & 5 SQM AC LEDGE

TOWER 08

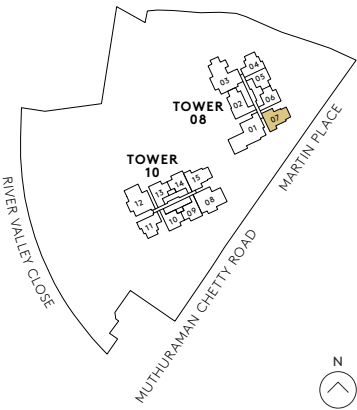
UNIT

#30-07



- |    |               |     |                  |    |                    |
|----|---------------|-----|------------------|----|--------------------|
| F  | FRIDGE        | SC  | SHOE CABINET     | WD | WARMER DRAWER      |
| DW | DISHWASHER    | WCH | WINE CHILLER     | CO | CONVENTIONAL OVEN  |
| IH | INDUCTION HOB | WM  | WASHER CUM DRYER | DB | DISTRIBUTION BOARD |
| GH | GAS HOB       | SO  | STEAM OVEN       |    |                    |

All plans are subjected to amendments as may be approved by the relevant authorities. Floor areas are approximate measurements and are subjected to final survey. BP approval number: A1709-00014-2016-BP01 dated: 4 May 2017.



3 BEDROOM  
TYPE C3

101 SQM / 1087 SQFT  
INCLUSIVE OF 12 SQM BALCONY & 5 SQM AC LEDGE

TOWER 08

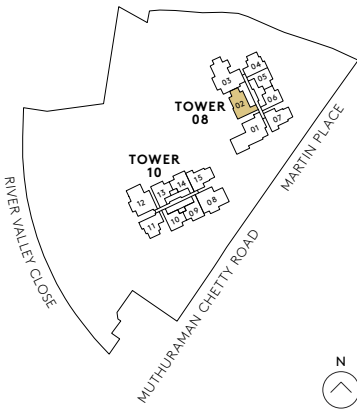
UNIT

#02-02 TO #29-02



- |    |               |     |                  |    |                    |
|----|---------------|-----|------------------|----|--------------------|
| F  | FRIDGE        | SC  | SHOE CABINET     | WD | WARMER DRAWER      |
| DW | DISHWASHER    | WCH | WINE CHILLER     | CO | CONVENTIONAL OVEN  |
| IH | INDUCTION HOB | WM  | WASHER CUM DRYER | DB | DISTRIBUTION BOARD |
| GH | GAS HOB       | SO  | STEAM OVEN       |    |                    |

All plans are subjected to amendments as may be approved by the relevant authorities. Floor areas are approximate measurements and are subjected to final survey. BP approval number: A1709-00014-2016-BP01 dated: 4 May 2017.





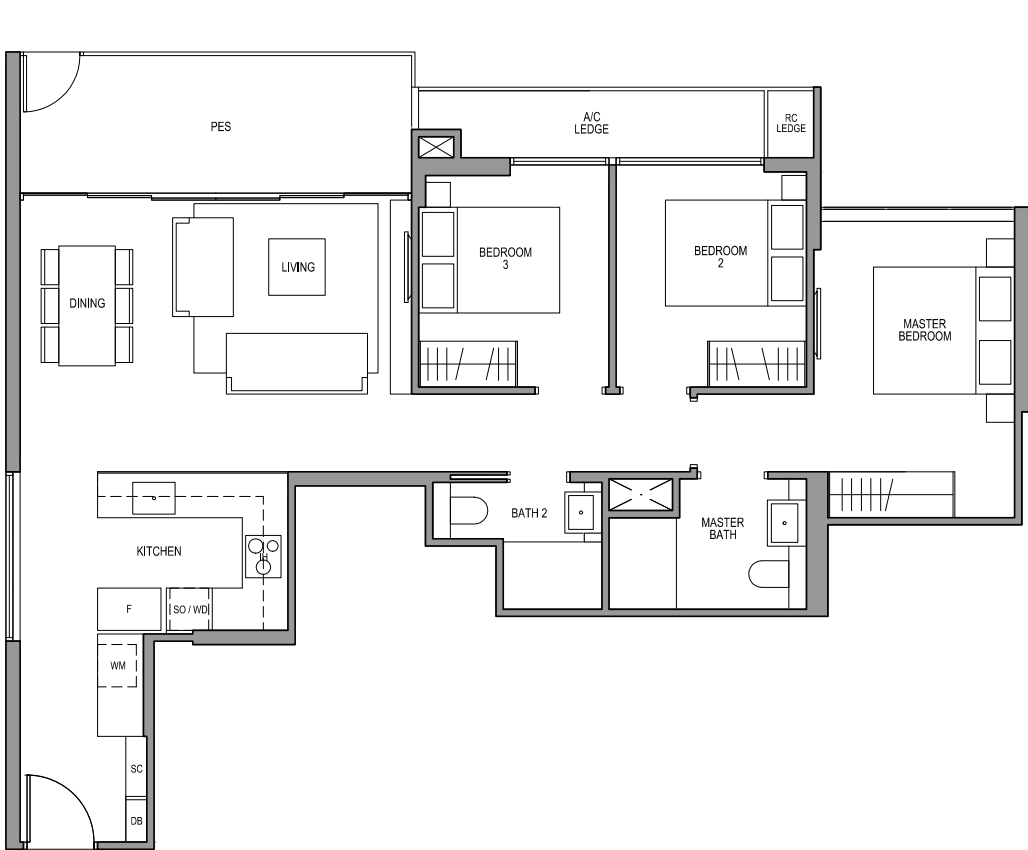
3 BEDROOM  
TYPE C3-G

101 SQM / 1087 SQFT  
INCLUSIVE OF 12 SQM PES & 5 SQM AC LEDGE

TOWER 08

UNIT

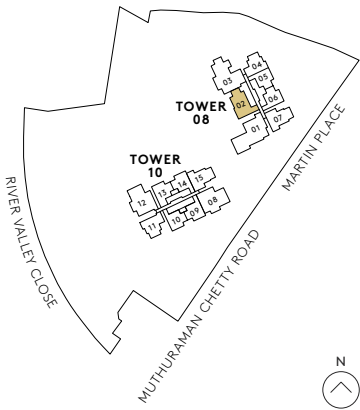
#01-02



0 1M 3M 5M

F	FRIDGE	SC	SHOE CABINET	WD	WARMER DRAWER
DW	DISHWASHER	WCH	WINE CHILLER	CO	CONVENTIONAL OVEN
IH	INDUCTION HOB	WM	WASHER CUM DRYER	DB	DISTRIBUTION BOARD
GH	GAS HOB	SO	STEAM OVEN		

All plans are subjected to amendments as may be approved by the relevant authorities. Floor areas are approximate measurements and are subjected to final survey. BP approval number: A1709-00014-2016-BP01 dated: 4 May 2017.



3 BEDROOM  
TYPE C3-R

101 SQM / 1087 SQFT  
INCLUSIVE OF 12 SQM BALCONY & 5 SQM AC LEDGE

TOWER 08

UNIT

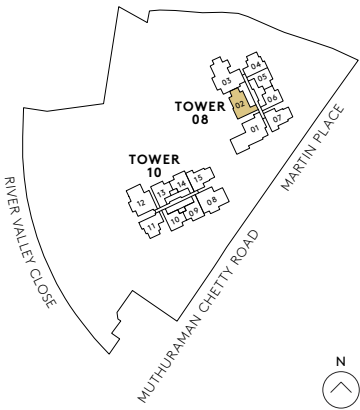
#30-02



0 1M 3M 5M

F	FRIDGE	SC	SHOE CABINET	WD	WARMER DRAWER
DW	DISHWASHER	WCH	WINE CHILLER	CO	CONVENTIONAL OVEN
IH	INDUCTION HOB	WM	WASHER CUM DRYER	DB	DISTRIBUTION BOARD
GH	GAS HOB	SO	STEAM OVEN		

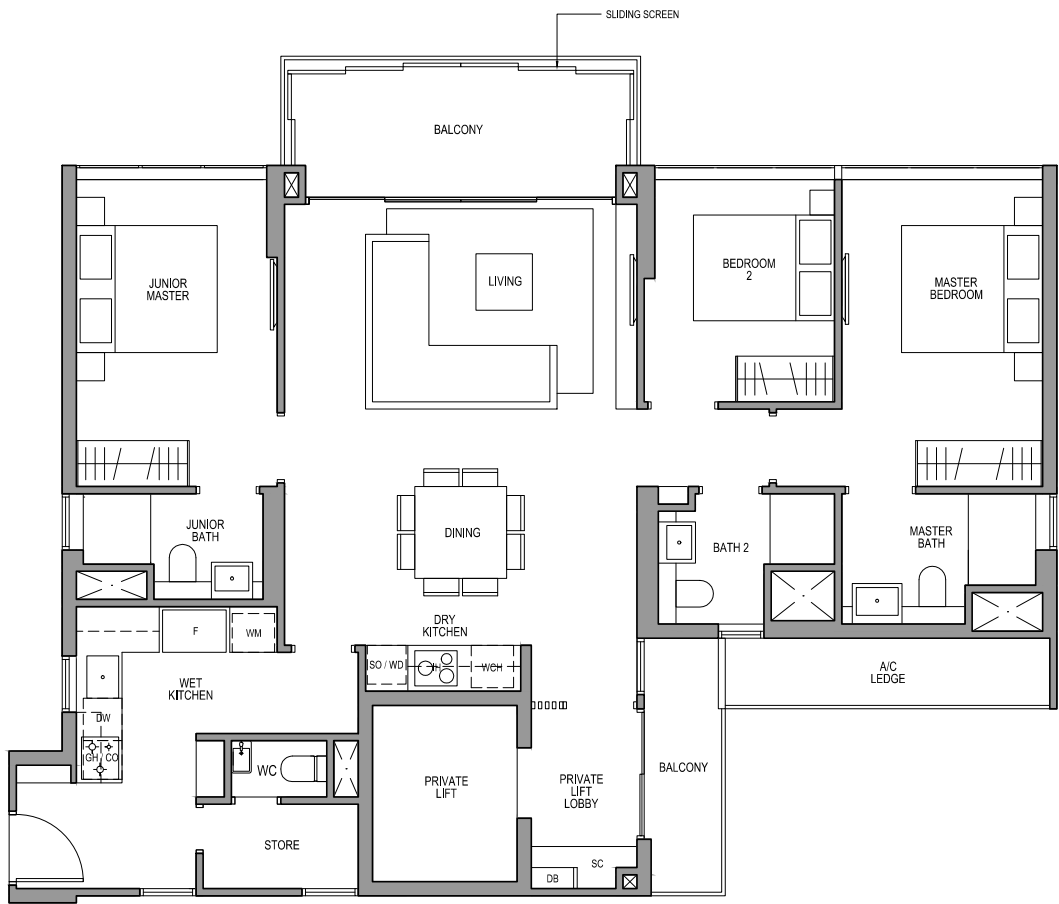
All plans are subjected to amendments as may be approved by the relevant authorities. Floor areas are approximate measurements and are subjected to final survey. BP approval number: A1709-00014-2016-BP01 dated: 4 May 2017.



3 BEDROOM PREMIUM  
TYPE C4(PL)

132 SQM / 1421 SQFT  
INCLUSIVE OF 14 SQM BALCONY & 5 SQM AC LEDGE

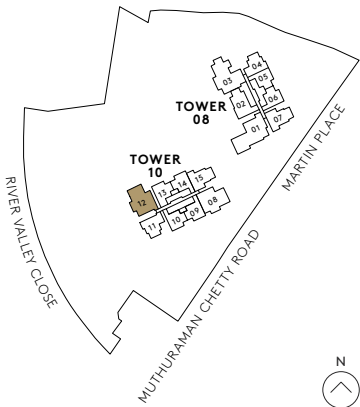
TOWER 10  
UNIT  
#02-12 TO #29-12



0 1M 3M 5M

- |    |               |     |                  |    |                    |
|----|---------------|-----|------------------|----|--------------------|
| F  | FRIDGE        | SC  | SHOE CABINET     | WD | WARMER DRAWER      |
| DW | DISHWASHER    | WCH | WINE CHILLER     | CO | CONVENTIONAL OVEN  |
| IH | INDUCTION HOB | WM  | WASHER CUM DRYER | DB | DISTRIBUTION BOARD |
| GH | GAS HOB       | SO  | STEAM OVEN       |    |                    |

All plans are subjected to amendments as may be approved by the relevant authorities. Floor areas are approximate measurements and are subjected to final survey. BP approval number: A1709-00014-2016-BP01 dated: 4 May 2017.



3 BEDROOM PREMIUM  
TYPE C4-G

124 SQM / 1335 SQFT  
INCLUSIVE OF 10 SQM PES & 6 SQM AC LEDGE

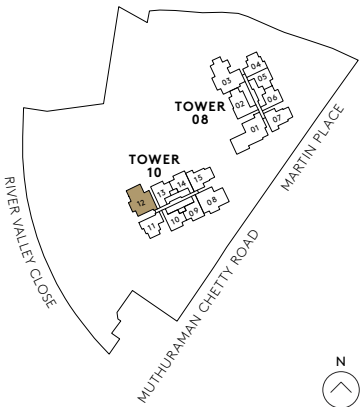
TOWER 10  
UNIT  
#01-12



0 1M 3M 5M

- |    |               |     |                  |    |                    |
|----|---------------|-----|------------------|----|--------------------|
| F  | FRIDGE        | SC  | SHOE CABINET     | WD | WARMER DRAWER      |
| DW | DISHWASHER    | WCH | WINE CHILLER     | CO | CONVENTIONAL OVEN  |
| IH | INDUCTION HOB | WM  | WASHER CUM DRYER | DB | DISTRIBUTION BOARD |
| GH | GAS HOB       | SO  | STEAM OVEN       |    |                    |

All plans are subjected to amendments as may be approved by the relevant authorities. Floor areas are approximate measurements and are subjected to final survey. BP approval number: A1709-00014-2016-BP01 dated: 4 May 2017.



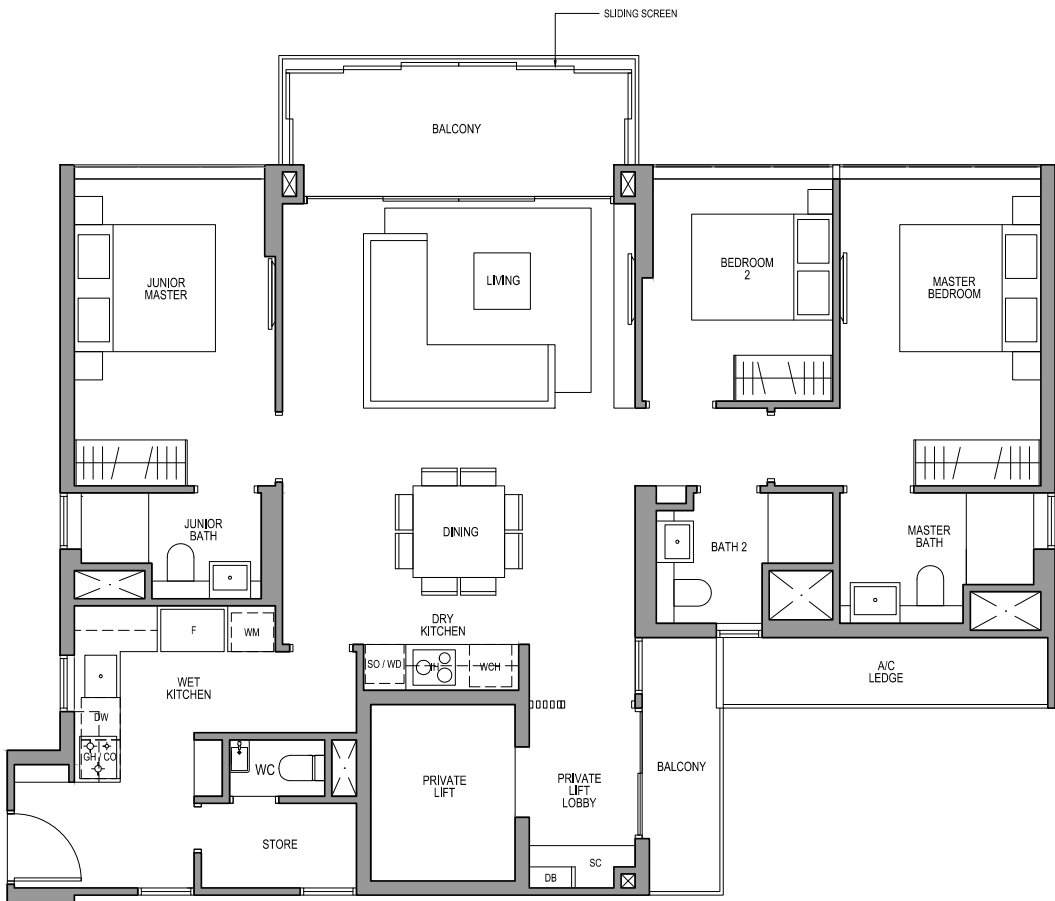
3 BEDROOM PREMIUM  
TYPE C4-R(PL)

132 SQM / 1421 SQFT  
INCLUSIVE OF 14 SQM BALCONY & 5 SQM AC LEDGE

TOWER 10

UNIT

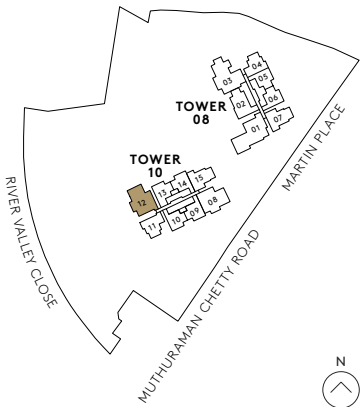
#30-12



0 1M 3M 5M

- |    |               |     |                  |    |                    |
|----|---------------|-----|------------------|----|--------------------|
| F  | FRIDGE        | SC  | SHOE CABINET     | WD | WARMER DRAWER      |
| DW | DISHWASHER    | WCH | WINE CHILLER     | CO | CONVENTIONAL OVEN  |
| IH | INDUCTION HOB | WM  | WASHER CUM DRYER | DB | DISTRIBUTION BOARD |
| GH | GAS HOB       | SO  | STEAM OVEN       |    |                    |

All plans are subjected to amendments as may be approved by the relevant authorities. Floor areas are approximate measurements and are subjected to final survey. BP approval number: A1709-00014-2016-BP01 dated: 4 May 2017.



3 BEDROOM PREMIUM  
TYPE C5(PL)

130 SQM / 1399 SQFT  
INCLUSIVE OF 14 SQM BALCONY & 5 SQM AC LEDGE

TOWER 10

UNIT

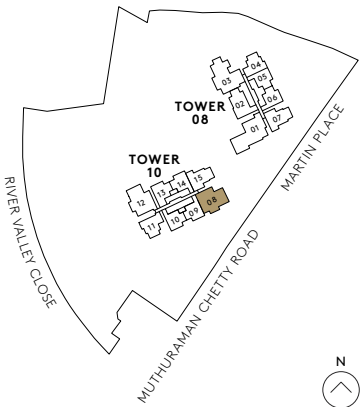
#02-08 TO #29-08



0 1M 3M 5M

- |    |               |     |                  |    |                    |
|----|---------------|-----|------------------|----|--------------------|
| F  | FRIDGE        | SC  | SHOE CABINET     | WD | WARMER DRAWER      |
| DW | DISHWASHER    | WCH | WINE CHILLER     | CO | CONVENTIONAL OVEN  |
| IH | INDUCTION HOB | WM  | WASHER CUM DRYER | DB | DISTRIBUTION BOARD |
| GH | GAS HOB       | SO  | STEAM OVEN       |    |                    |

All plans are subjected to amendments as may be approved by the relevant authorities. Floor areas are approximate measurements and are subjected to final survey. BP approval number: A1709-00014-2016-BP01 dated: 4 May 2017.

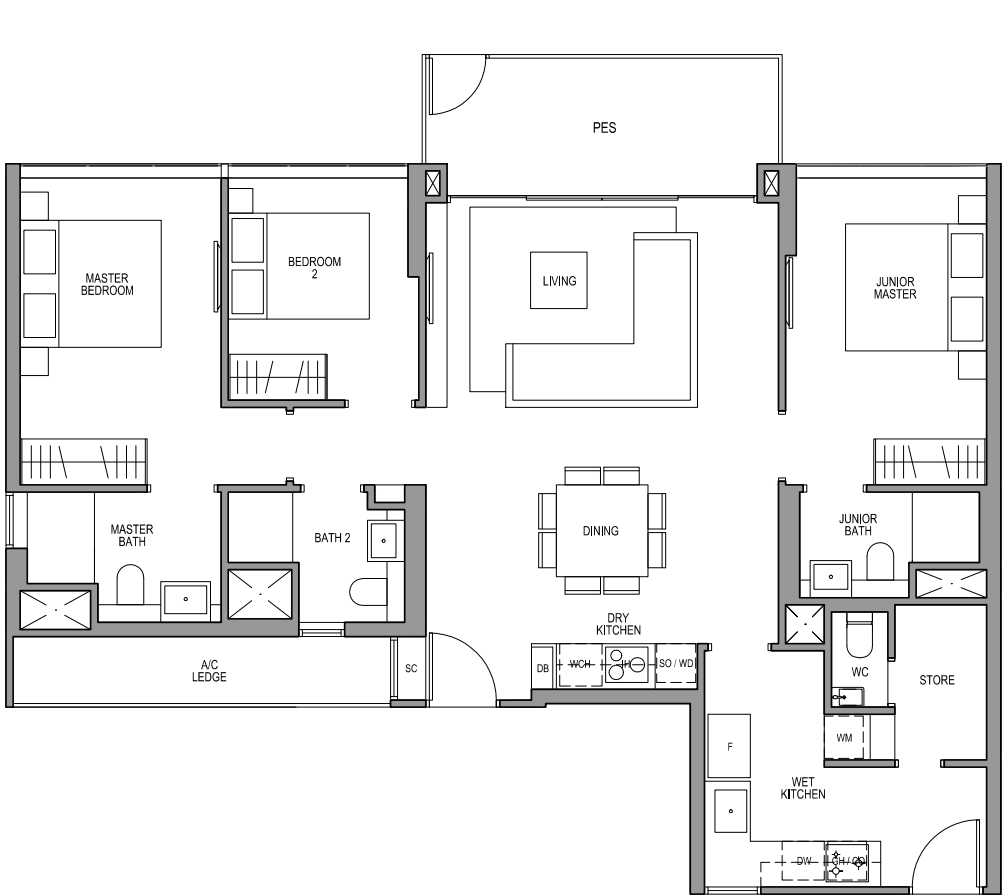


3 BEDROOM PREMIUM  
TYPE C5-G

123 SQM / 1324 SQFT  
INCLUSIVE OF 10 SQM PES & 6 SQM AC LEDGE

TOWER 10

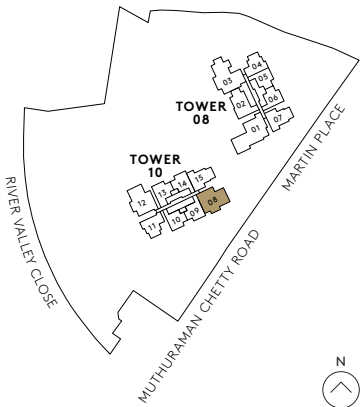
UNIT  
#01-08



0 1M 3M 5M

- |    |               |     |                  |    |                    |
|----|---------------|-----|------------------|----|--------------------|
| F  | FRIDGE        | SC  | SHOE CABINET     | WD | WARMER DRAWER      |
| DW | DISHWASHER    | WCH | WINE CHILLER     | CO | CONVENTIONAL OVEN  |
| IH | INDUCTION HOB | WM  | WASHER CUM DRYER | DB | DISTRIBUTION BOARD |
| GH | GAS HOB       | SO  | STEAM OVEN       |    |                    |

All plans are subjected to amendments as may be approved by the relevant authorities. Floor areas are approximate measurements and are subjected to final survey. BP approval number: A1709-00014-2016-BP01 dated: 4 May 2017.



3 BEDROOM PREMIUM  
TYPE C5-R(PL)

130 SQM / 1399 SQFT  
INCLUSIVE OF 14 SQM BALCONY & 5 SQM AC LEDGE

TOWER 10

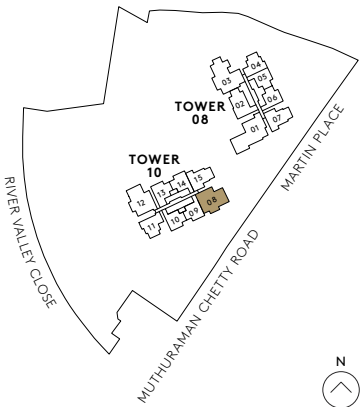
UNIT  
#30-08



0 1M 3M 5M

- |    |               |     |                  |    |                    |
|----|---------------|-----|------------------|----|--------------------|
| F  | FRIDGE        | SC  | SHOE CABINET     | WD | WARMER DRAWER      |
| DW | DISHWASHER    | WCH | WINE CHILLER     | CO | CONVENTIONAL OVEN  |
| IH | INDUCTION HOB | WM  | WASHER CUM DRYER | DB | DISTRIBUTION BOARD |
| GH | GAS HOB       | SO  | STEAM OVEN       |    |                    |

All plans are subjected to amendments as may be approved by the relevant authorities. Floor areas are approximate measurements and are subjected to final survey. BP approval number: A1709-00014-2016-BP01 dated: 4 May 2017.





4 BEDROOM PREMIUM  
TYPE D1(PL)

161 SQM / 1733 SQFT  
INCLUSIVE OF 15 SQM BALCONY & 8 SQM AC LEDGE

TOWER 08

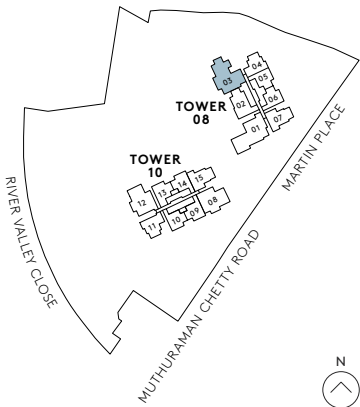
UNIT  
#02-03 to #29-03



0 1M 3M 5M

- |    |               |     |                  |    |                    |
|----|---------------|-----|------------------|----|--------------------|
| F  | FRIDGE        | SC  | SHOE CABINET     | WD | WARMER DRAWER      |
| DW | DISHWASHER    | WCH | WINE CHILLER     | CO | CONVENTIONAL OVEN  |
| IH | INDUCTION HOB | WM  | WASHER CUM DRYER | DB | DISTRIBUTION BOARD |
| GH | GAS HOB       | SO  | STEAM OVEN       |    |                    |

All plans are subjected to amendments as may be approved by the relevant authorities. Floor areas are approximate measurements and are subjected to final survey. BP approval number: A1709-00014-2016-BP01 dated: 4 May 2017.



4 BEDROOM PREMIUM  
TYPE D1-G(PL)

158 SQM / 1701 SQFT  
INCLUSIVE OF 15 SQM PES & 7 SQM AC LEDGE

TOWER 08

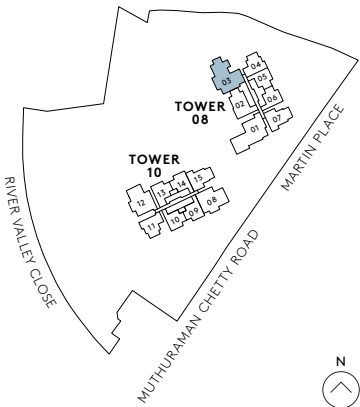
UNIT  
#01-03



0 1M 3M 5M

- |    |               |     |                  |    |                    |
|----|---------------|-----|------------------|----|--------------------|
| F  | FRIDGE        | SC  | SHOE CABINET     | WD | WARMER DRAWER      |
| DW | DISHWASHER    | WCH | WINE CHILLER     | CO | CONVENTIONAL OVEN  |
| IH | INDUCTION HOB | WM  | WASHER CUM DRYER | DB | DISTRIBUTION BOARD |
| GH | GAS HOB       | SO  | STEAM OVEN       |    |                    |

All plans are subjected to amendments as may be approved by the relevant authorities. Floor areas are approximate measurements and are subjected to final survey. BP approval number: A1709-00014-2016-BP01 dated: 4 May 2017.



4 BEDROOM PREMIUM  
TYPE D1-R(PL)

161 SQM / 1733 SQFT  
INCLUSIVE OF 15 SQM BALCONY & 8 SQM AC LEDGE

TOWER 08

UNIT  
#30-03

4 BEDROOM PREMIUM  
TYPE D2(PL)

167 SQM / 1798 SQFT  
INCLUSIVE OF 20 SQM BALCONY & 6 SQM AC LEDGE

TOWER 08

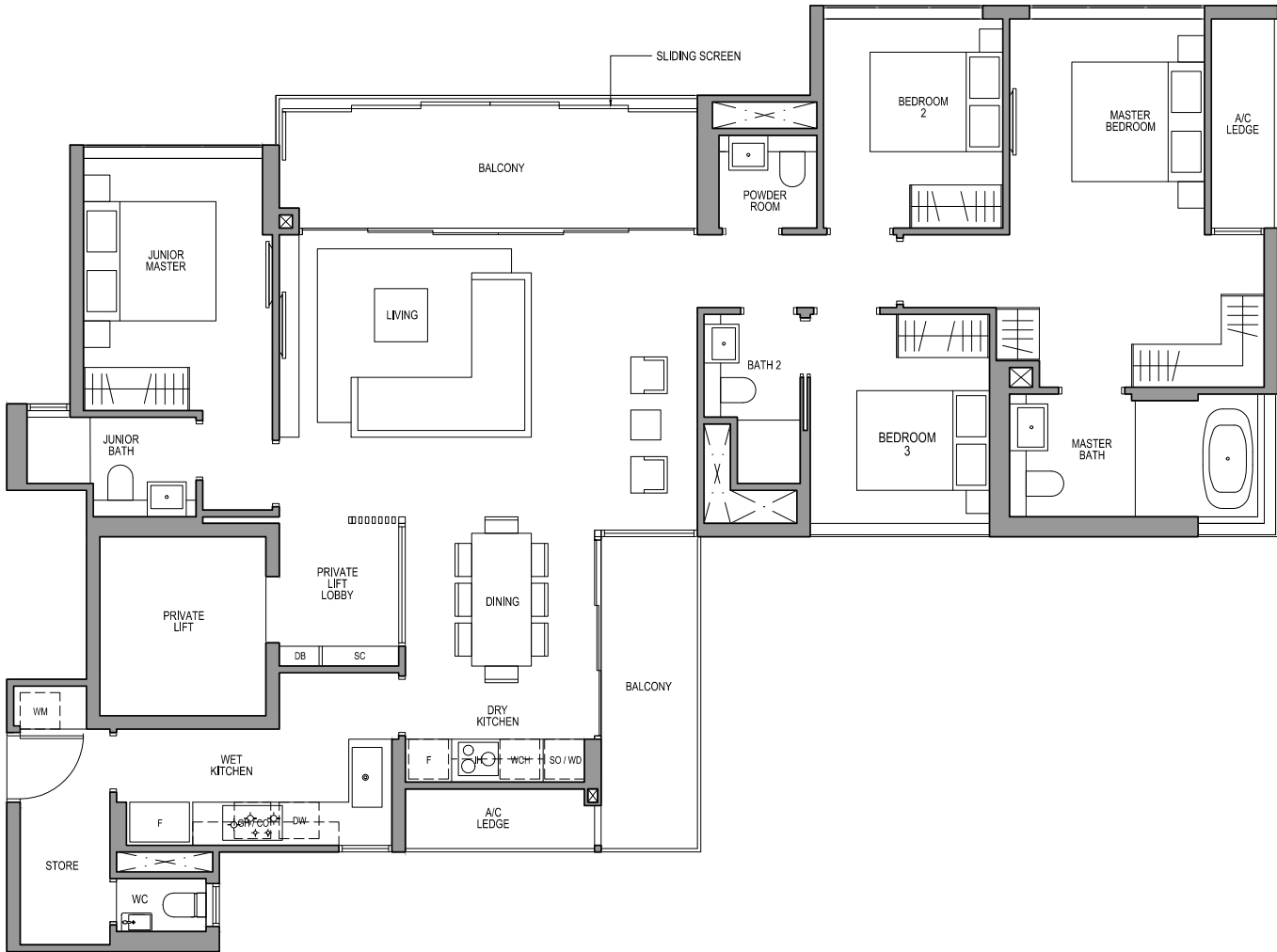
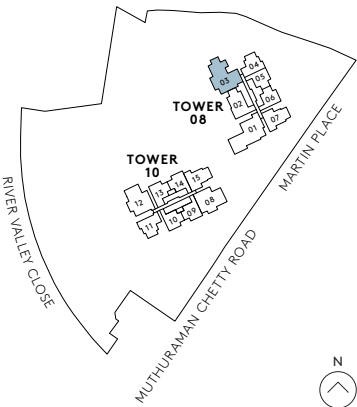
UNIT  
#02-01 TO #29-01



0 1M 3M 5M

- |    |               |     |                  |    |                    |
|----|---------------|-----|------------------|----|--------------------|
| F  | FRIDGE        | SC  | SHOE CABINET     | WD | WARMER DRAWER      |
| DW | DISHWASHER    | WCH | WINE CHILLER     | CO | CONVENTIONAL OVEN  |
| IH | INDUCTION HOB | WM  | WASHER CUM DRYER | DB | DISTRIBUTION BOARD |
| GH | GAS HOB       | SO  | STEAM OVEN       |    |                    |

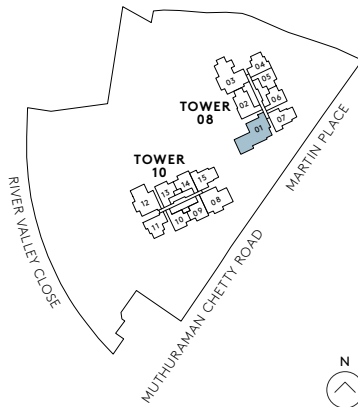
All plans are subjected to amendments as may be approved by the relevant authorities. Floor areas are approximate measurements and are subjected to final survey. BP approval number: A1709-00014-2016-BP01 dated: 4 May 2017.



0 1M 3M 5M

- |    |               |     |                  |    |                    |
|----|---------------|-----|------------------|----|--------------------|
| F  | FRIDGE        | SC  | SHOE CABINET     | WD | WARMER DRAWER      |
| DW | DISHWASHER    | WCH | WINE CHILLER     | CO | CONVENTIONAL OVEN  |
| IH | INDUCTION HOB | WM  | WASHER CUM DRYER | DB | DISTRIBUTION BOARD |
| GH | GAS HOB       | SO  | STEAM OVEN       |    |                    |

All plans are subjected to amendments as may be approved by the relevant authorities. Floor areas are approximate measurements and are subjected to final survey. BP approval number: A1709-00014-2016-BP01 dated: 4 May 2017.



4 BEDROOM PREMIUM  
TYPE D2-G(PL)

167 SQM / 1798 SQFT  
INCLUSIVE OF 20 SQM PES & 6 SQM AC LEDGE

TOWER 08

UNIT

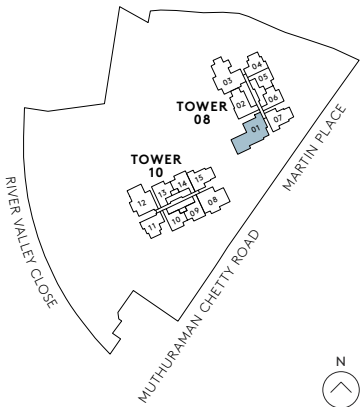
#01-01



0 1M 3M 5M

F	FRIDGE	SC	SHOE CABINET	WD	WARMER DRAWER
DW	DISHWASHER	WCH	WINE CHILLER	CO	CONVENTIONAL OVEN
IH	INDUCTION HOB	WM	WASHER CUM DRYER	DB	DISTRIBUTION BOARD
GH	GAS HOB	SO	STEAM OVEN		

All plans are subjected to amendments as may be approved by the relevant authorities. Floor areas are approximate measurements and are subjected to final survey. BP approval number: A1709-00014-2016-BP01 dated: 4 May 2017.



4 BEDROOM PREMIUM  
TYPE D2-R(PL)

167 SQM / 1798 SQFT  
INCLUSIVE OF 20 SQM BALCONY & 6 SQM AC LEDGE

TOWER 08

UNIT

#30-01



0 1M 3M 5M

F	FRIDGE	SC	SHOE CABINET	WD	WARMER DRAWER
DW	DISHWASHER	WCH	WINE CHILLER	CO	CONVENTIONAL OVEN
IH	INDUCTION HOB	WM	WASHER CUM DRYER	DB	DISTRIBUTION BOARD
GH	GAS HOB	SO	STEAM OVEN		

All plans are subjected to amendments as may be approved by the relevant authorities. Floor areas are approximate measurements and are subjected to final survey. BP approval number: A1709-00014-2016-BP01 dated: 4 May 2017.

