



8 St Thomas

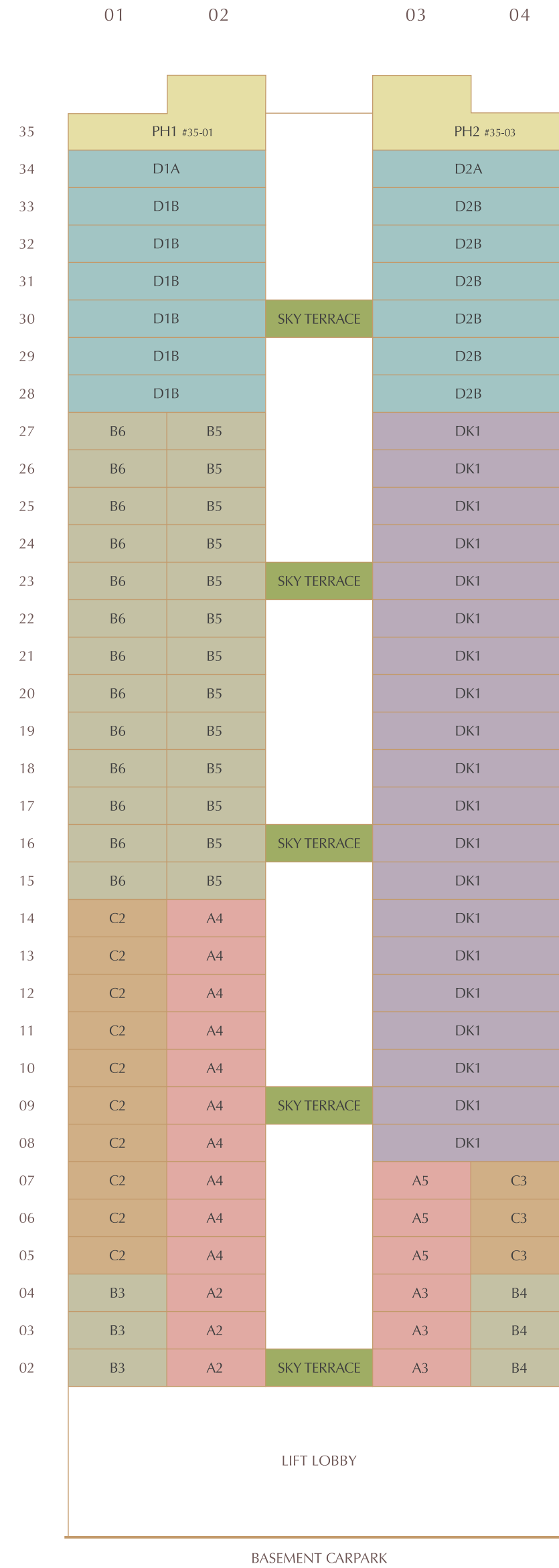
The Art of Sophistication

Schematic Diagram

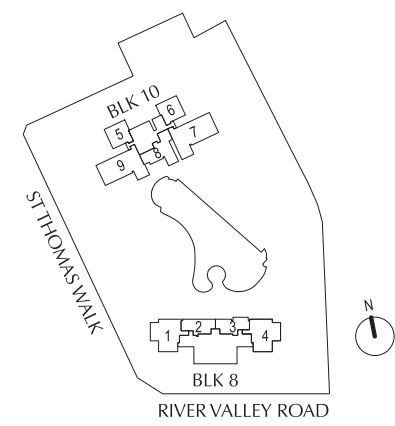
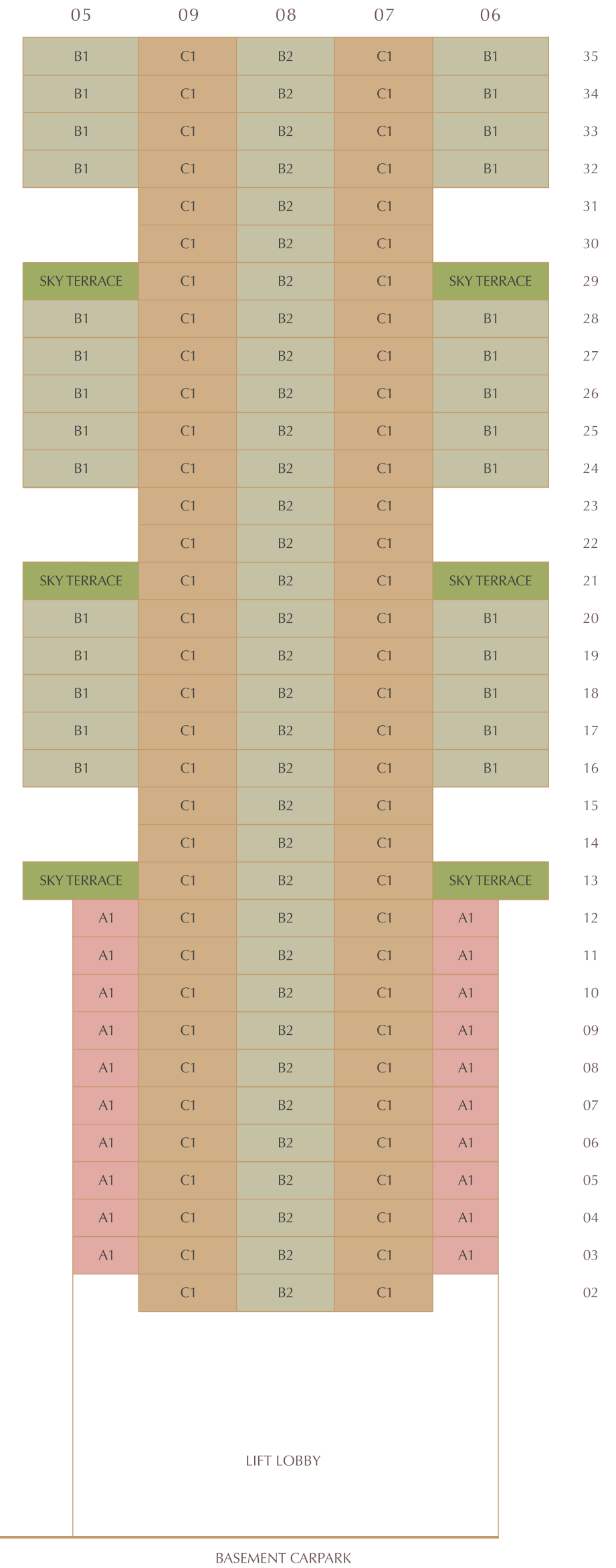
Legend

- 1 BEDROOM
- 2 BEDROOM
- 3 BEDROOM
- 4 BEDROOM
- 4 BEDROOM DUAL KEY
- PENTHOUSE

8 St Thomas Walk Singapore 238146



10 St Thomas Walk Singapore 238102

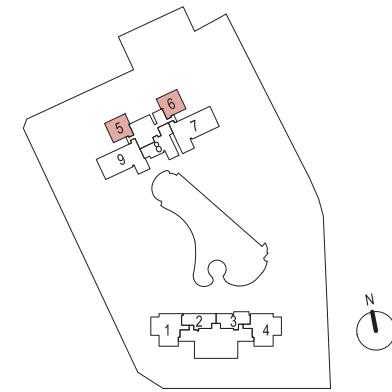
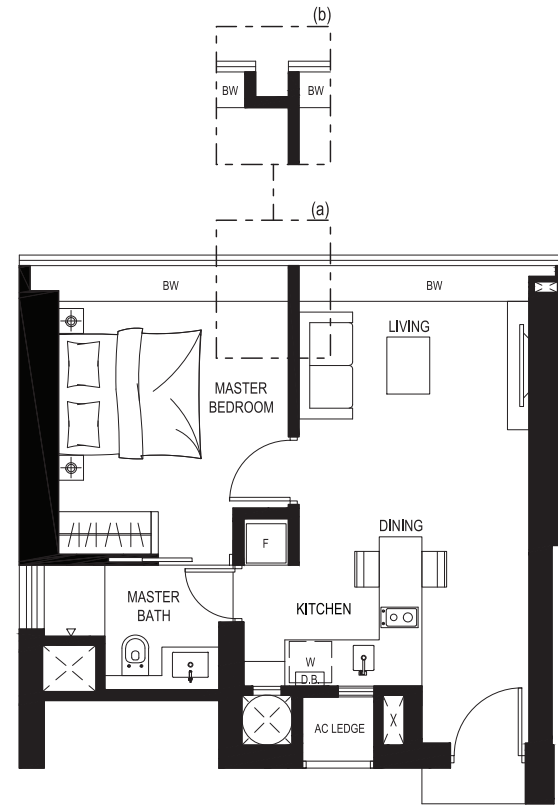


1-Bedroom



Type A1

47 sq m / 506 sq ft
#03-05 to #12-05
#03-06* to #12-06*



(a) Applicable to: #03-05 to #07-05, #08-06* to #12-06* (b) Applicable to: #08-05 to #12-05, #03-06* to #07-06*

Note : - handed/ mirrored units not shown *represent mirrored unit

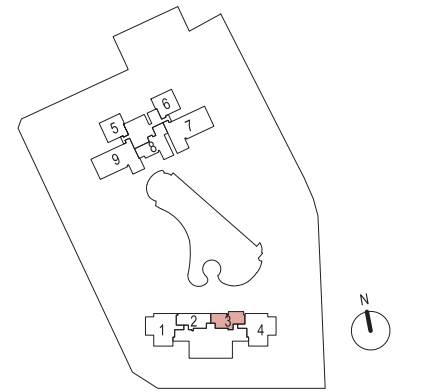
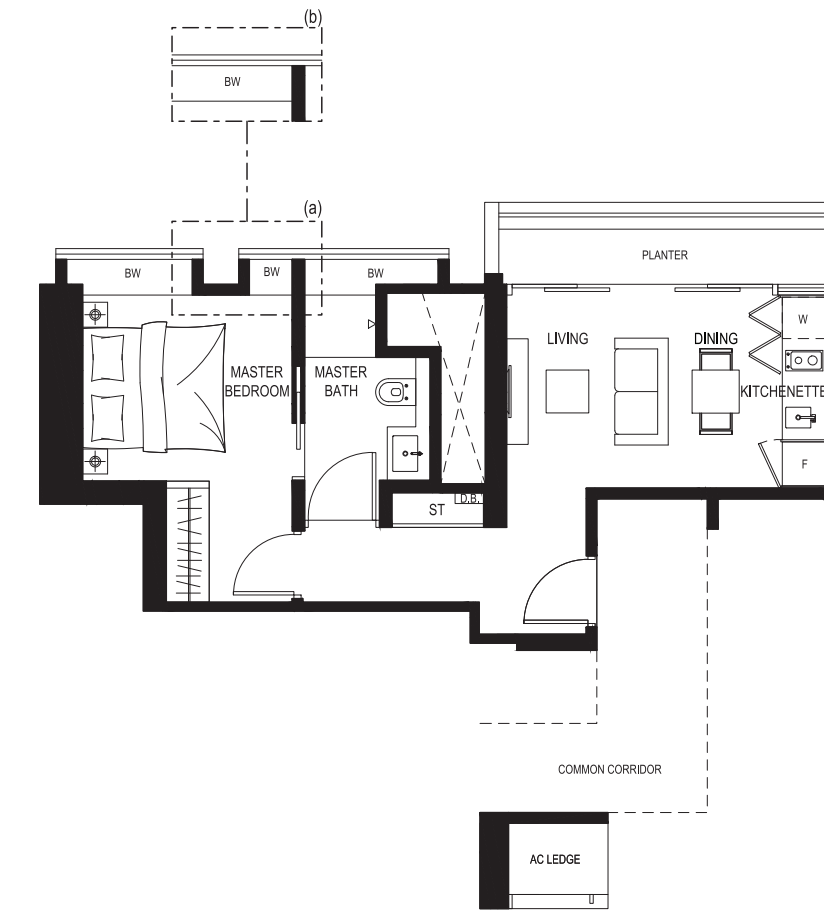
Area includes A/C ledge, balcony and void (where applicable). Plans are approximate measurements and are subject to amendments as may be required or approved by relevant authorities.

1-Bedroom



Type A3

48 sq m / 517 sq ft
#02-03 to #04-03

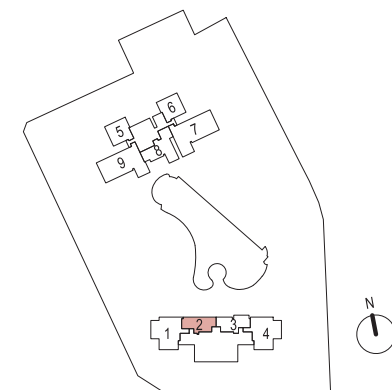
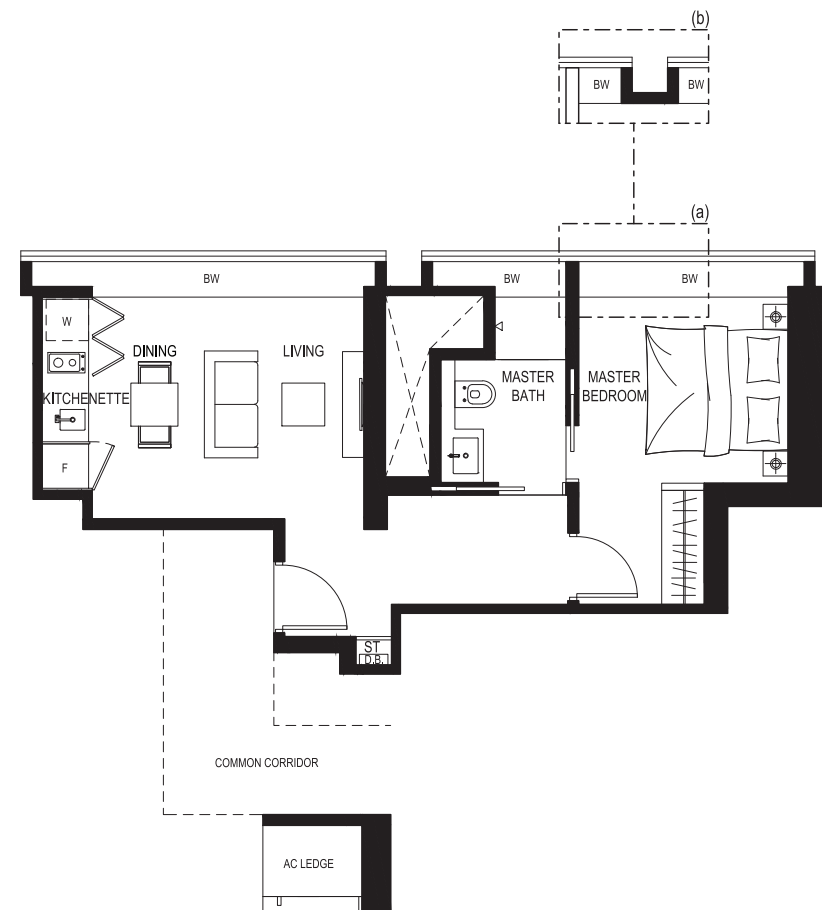


(a) Applicable to: #02-03 to #03-03 (b) Applicable to: #04-03

Area includes A/C ledge, balcony and void (where applicable). Plans are approximate measurements and are subject to amendments as may be required or approved by relevant authorities.

Type A2

47 sq m / 506 sq ft
#02-02 to #04-02

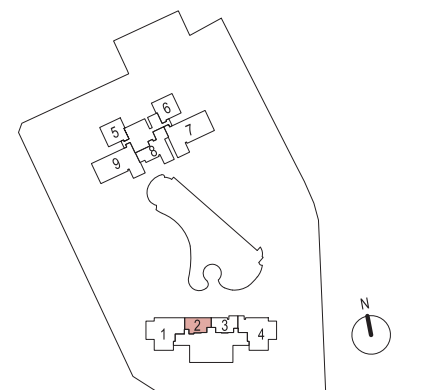
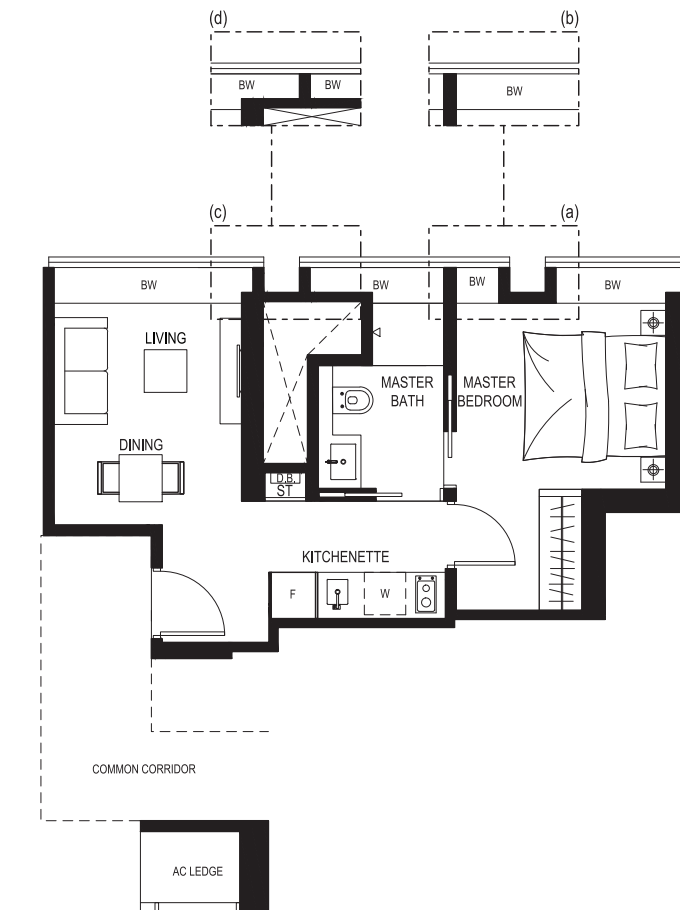


(a) Applicable to: #02-02 to #03-02 (b) Applicable to: #04-02

Area includes A/C ledge, balcony and void (where applicable). Plans are approximate measurements and are subject to amendments as may be required or approved by relevant authorities.

Type A4

41 sq m / 441 sq ft
#05-02 to #14-02



(a) Applicable to: #05-02 to #08-02 (b) Applicable to: #09-02 to #14-02

(c) Applicable to: #05-02 to #08-02, #14-02 (d) Applicable to: #09-02 to #13-02

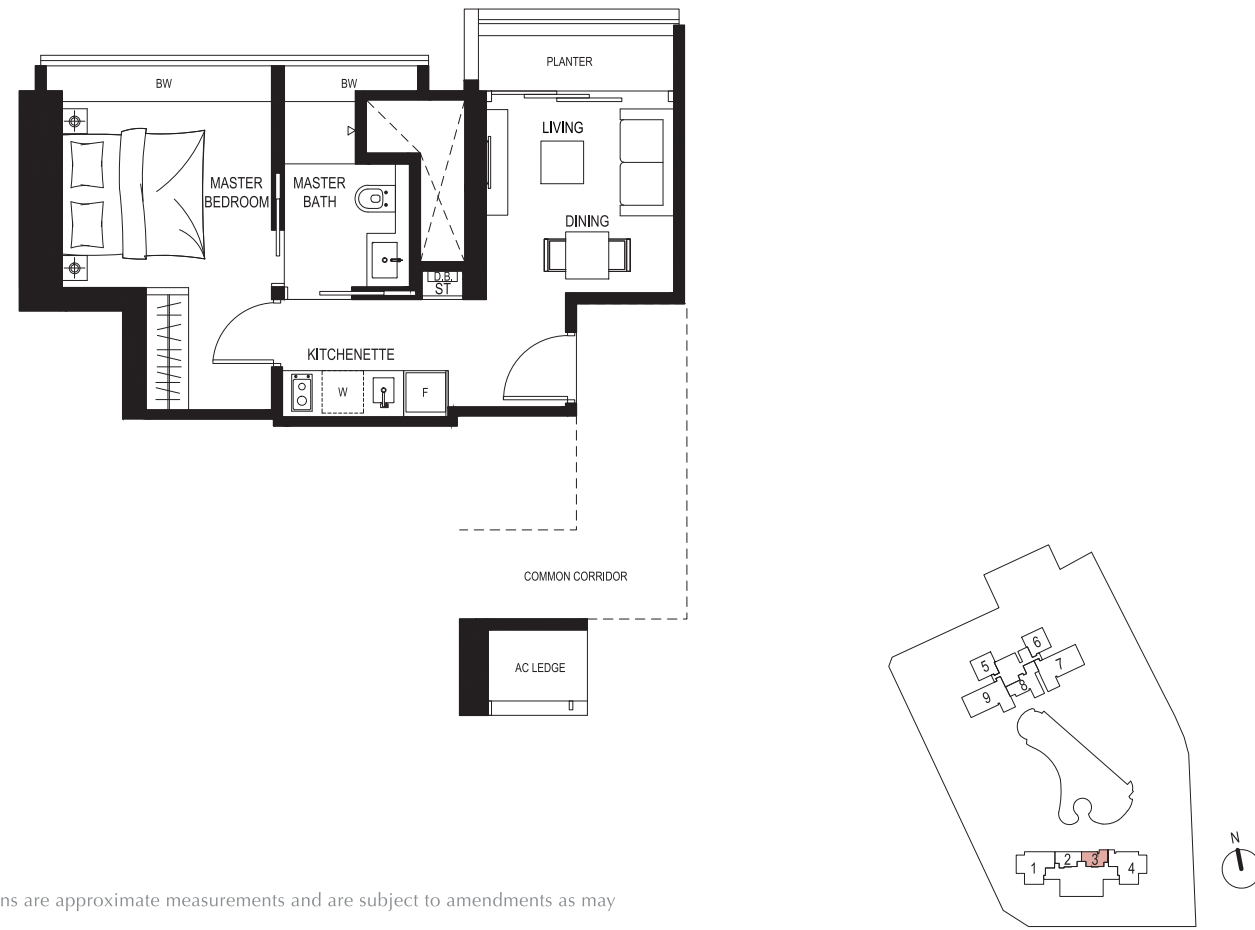
Area includes A/C ledge, balcony and void (where applicable). Plans are approximate measurements and are subject to amendments as may be required or approved by relevant authorities.

1-Bedroom



Type A5

41 sq m / 441 sq ft
#05-03 to #07-03



Area includes A/C ledge, balcony and void (where applicable). Plans are approximate measurements and are subject to amendments as may be required or approved by relevant authorities.



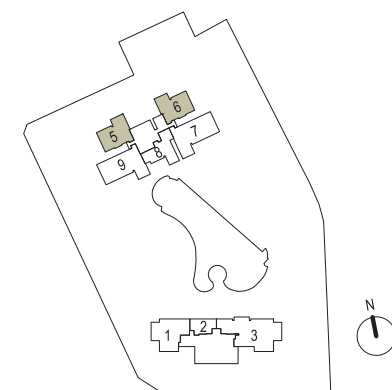
Actual Photo

2-Bedroom



Type B1

81 sq m / 872 sq ft
 #16-05 to #20-05
 #24-05 to #28-05
 #32-05 to #35-05
 #16-06* to #20-06*
 #24-06* to #28-06*
 #32-06* to #35-06*



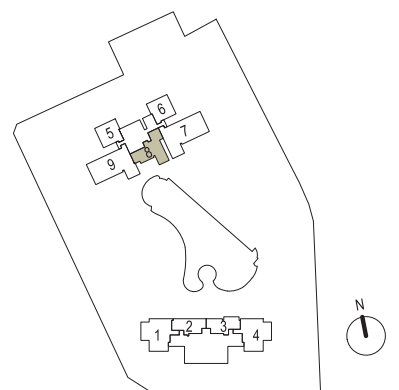
(a) Applicable to: #16-05 to #20-05, #24-05 to #28-05, #32-05 to #35-05, #24-06* to #27-06*, #32-06* to #35-06*
 (b) Applicable to: #16-06* to #20-06*, #28-06*
 Note: - handed/ mirrored units not shown *represent mirrored unit
 Area includes A/C ledge, balcony and void (where applicable). Plans are approximate measurements and are subject to amendments as may be required or approved by relevant authorities.

2-Bedroom



Type B2

75 sq m / 807 sq ft
 #02-08 to #35-08



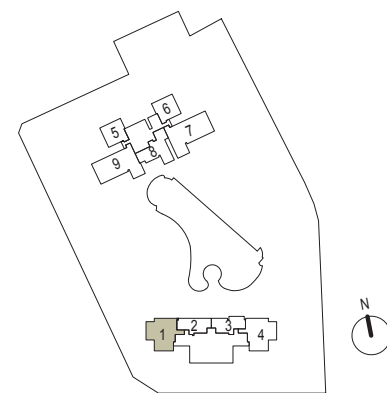
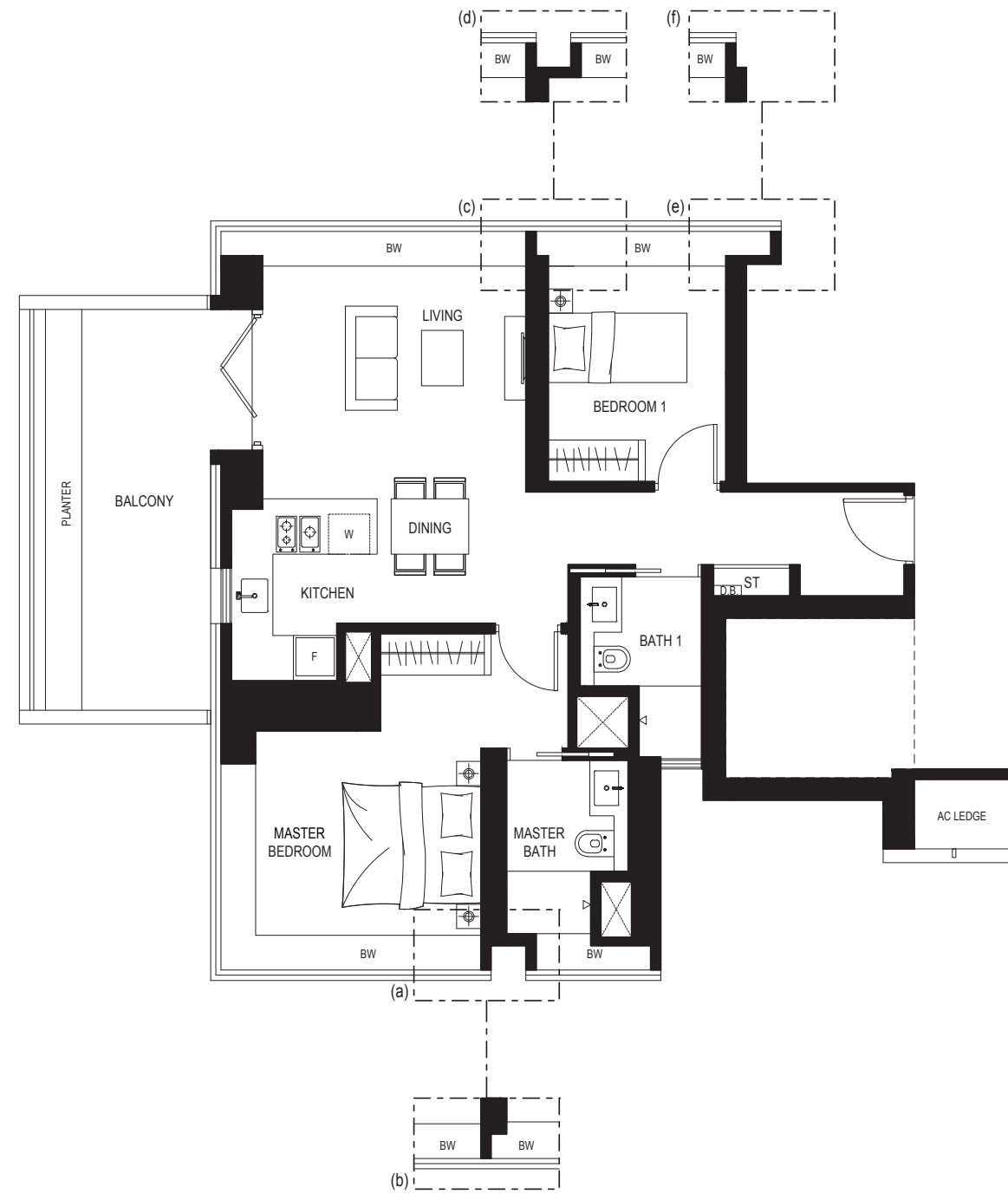
(a) Applicable to: #02-08 to #15-08, #21-08 to #24-08, #30-08 to #35-08
 (b) Applicable to: #16-08 to #20-08, #25-08 to #29-08
 Area includes A/C ledge, balcony and void (where applicable). Plans are approximate measurements and are subject to amendments as may be required or approved by relevant authorities.

2-Bedroom



Type B3

97 sq m / 1044 sq ft
#02-01 to #04-01



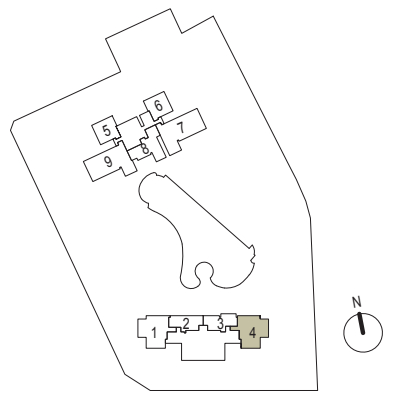
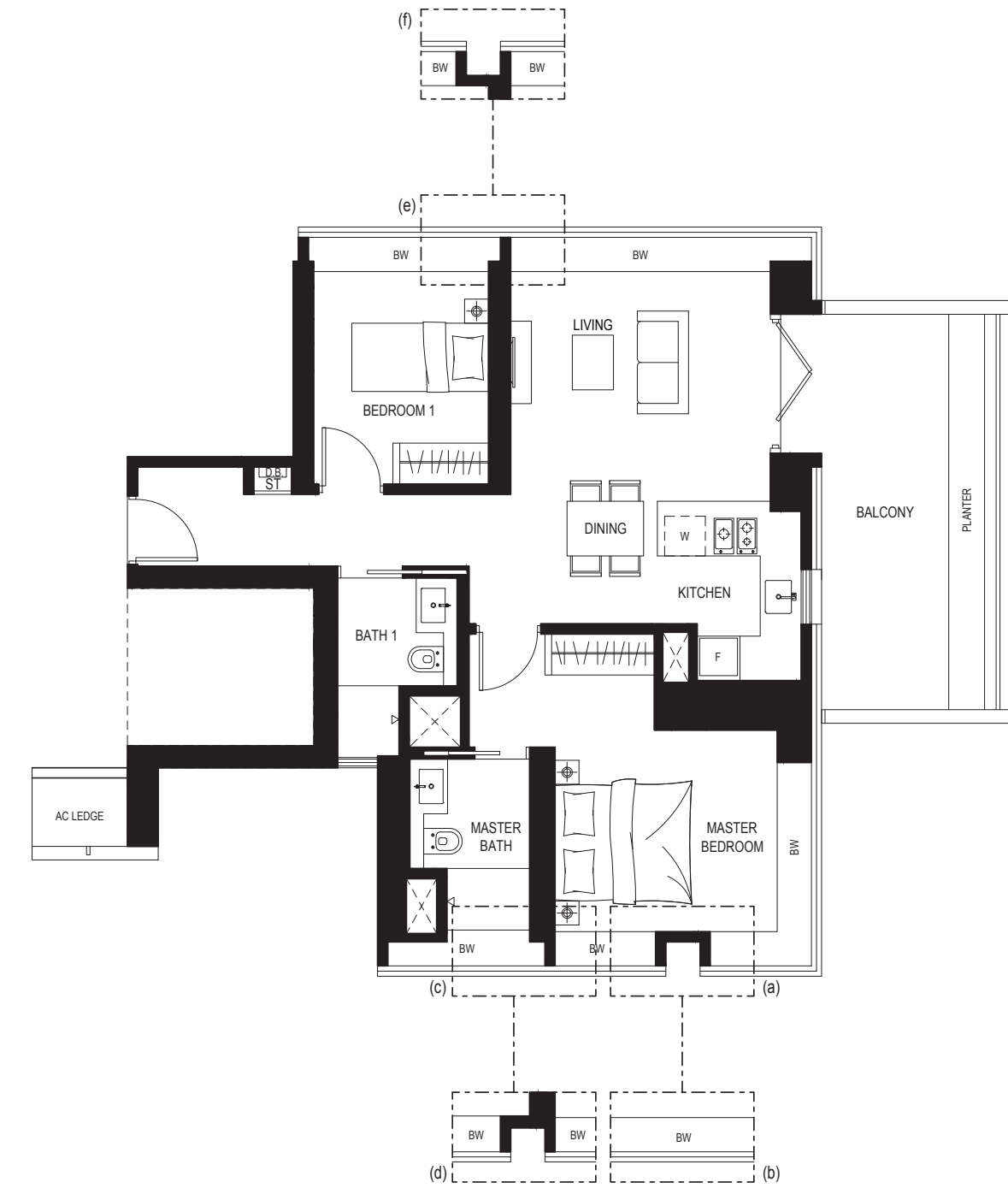
(a) Applicable to: #02-01 & #04-01 (b) Applicable to: #03-01 (c) Applicable to: #02-01
(d) Applicable to: #03-01 to #04-01 (e) Applicable to: #03-01 to #04-01 (f) Applicable to: #02-01
Area includes A/C ledge, balcony and void (where applicable). Plans are approximate measurements and are subject to amendments as may be required or approved by relevant authorities.

2-Bedroom



Type B4

97 sq m / 1044 sq ft
#02-04 to #04-04



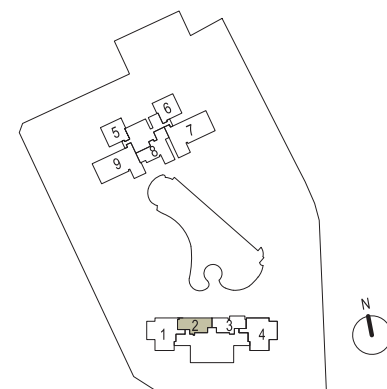
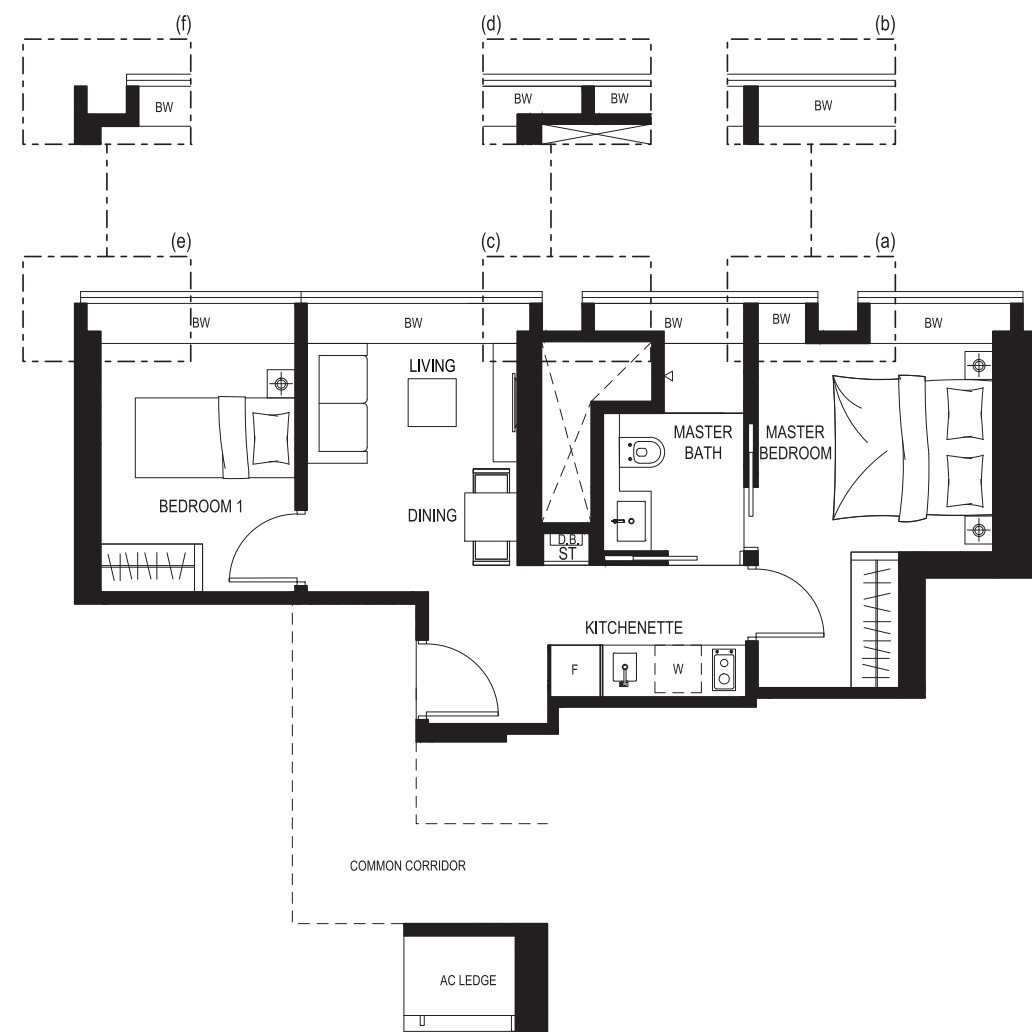
(a) Applicable to: #02-04 to #03-04 (b) Applicable to: #04-04 (c) Applicable to: #02-04 to #03-04
(d) Applicable to: #04-04 (e) Applicable to: #02-04 to #03-04 (f) Applicable to: #04-04
Area includes A/C ledge, balcony and void (where applicable). Plans are approximate measurements and are subject to amendments as may be required or approved by relevant authorities.

2-Bedroom



Type B5

51 sq m / 549 sq ft
#15-02 to #27-02



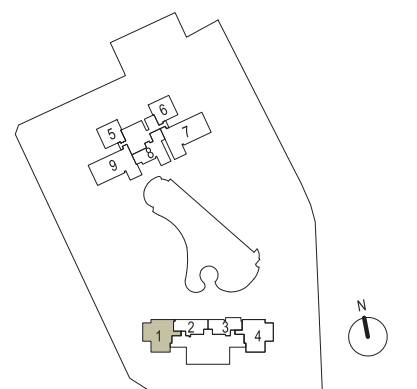
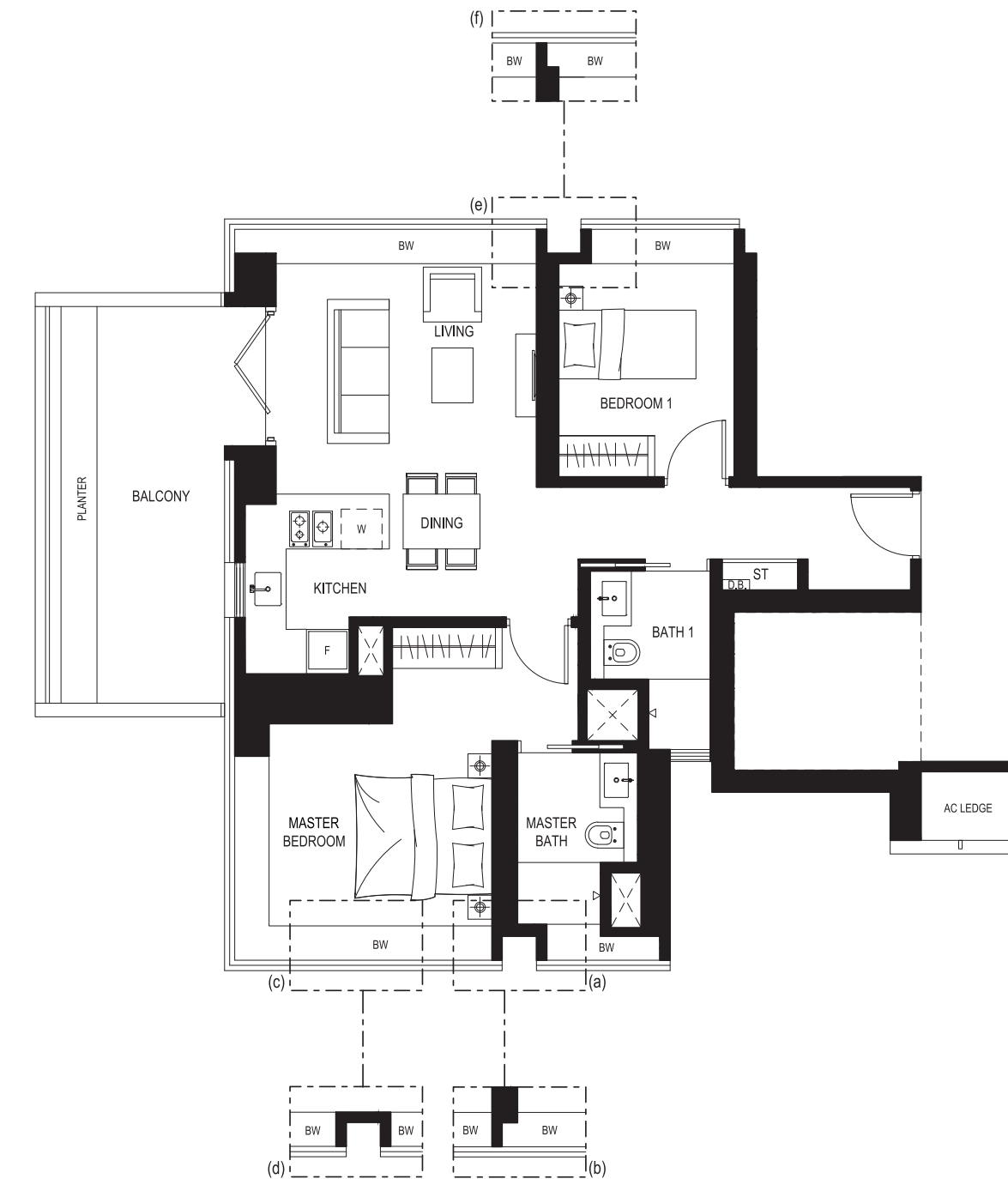
(a) Applicable to: #20-02 to #24-02 (b) Applicable to: #15-02 to #19-02, #25-02 to #27-02 (c) Applicable to: #15-02 to #24-02
(d) Applicable to: #25-02 to #27-02 (e) Applicable to: #19-02 to #24-02 (f) Applicable to: #15-02 to #18-02, #25-02 to #27-02
Area includes A/C ledge, balcony and void (where applicable). Plans are approximate measurements and are subject to amendments as may be required or approved by relevant authorities.

2-Bedroom



Type B6

97 sq m / 1044 sq ft
#15-01 to #27-01



(a) Applicable to: #15-01 to #18-01, #20-01 to #24-01 (b) Applicable to: #19-01, #25-01 to #27-01 (c) Applicable to: #15-01 to #24-01
(d) Applicable to: #25-01 to #27-01 (e) Applicable to: #19-01 to #27-01 (f) Applicable to: #15-01 to #18-01
Area includes A/C ledge, balcony and void (where applicable). Plans are approximate measurements and are subject to amendments as may be required or approved by relevant authorities.

3-Bedroom

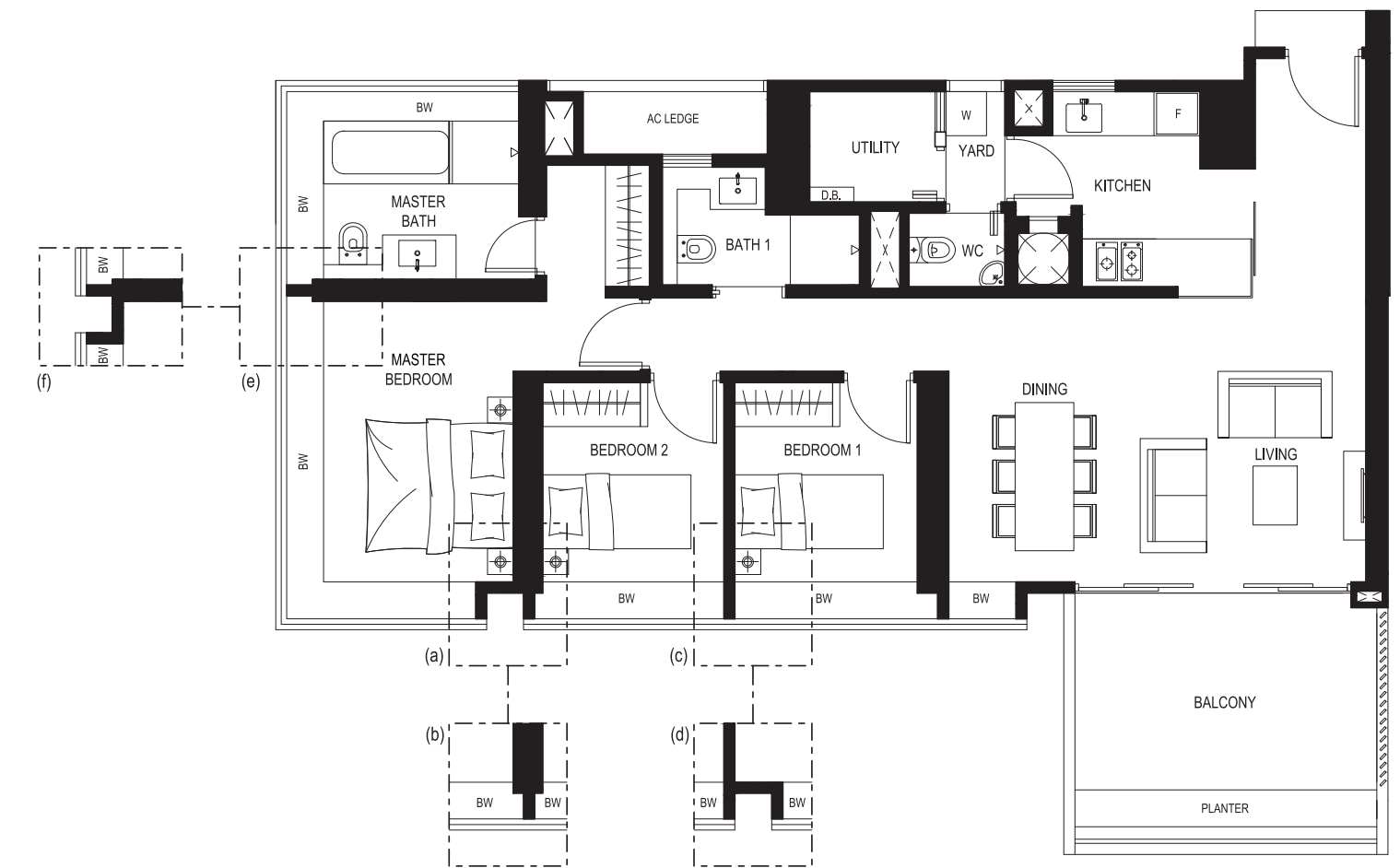


Type C1

121 sq m / 1302 sq ft
 #02-07* to #35-07*
 #02-09 to #35-09

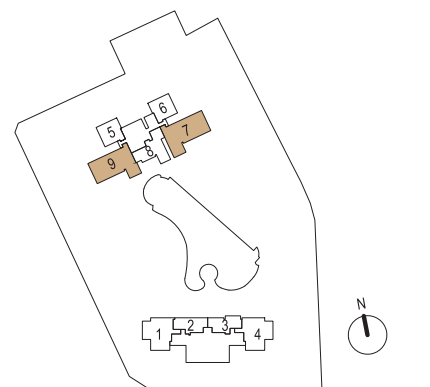


Actual Photo



- (a) Applicable to: #02-09 to #07-09, #14-09 to #23-09, #28-09 to #31-09, #08-07* to #15-07*, #21-07* to #24-07*, #30-07* to #35-07*
- (b) Applicable to: #08-09 to #13-09, #24-09 to #27-09, #32-09 to #35-09, #02-07* to #07-07*, #16-07* to #20-07*, #25-07* to #29-07*
- (c) Applicable to: #02-09 to #07-09, #13-09 to #23-09, #28-09 to #31-09, #08-07* to #15-07*, #21-07* to #24-07*, #29-07* to #35-07*
- (d) Applicable to: #08-09 to #12-09, #24-09 to #27-09, #32-09 to #35-09, #02-07* to #07-07*, #16-07* to #20-07*, #25-07* to #28-07*
- (e) Applicable to: #02-09 to #07-09, #13-09 to #23-09, #28-09 to #31-09, #08-07* to #15-07*, #21-07* to #24-07*, #29-07* to #35-07*
- (f) Applicable to: #08-09 to #12-09, #24-09 to #27-09, #32-09 to #35-09, #02-07* to #07-07*, #16-07* to #20-07*, #25-07* to #28-07*

Note : - handed/ mirrored units not shown *represent mirrored unit
 Area includes A/C ledge, balcony and void (where applicable). Plans are approximate measurements and are subject to amendments as may be required or approved by relevant authorities.

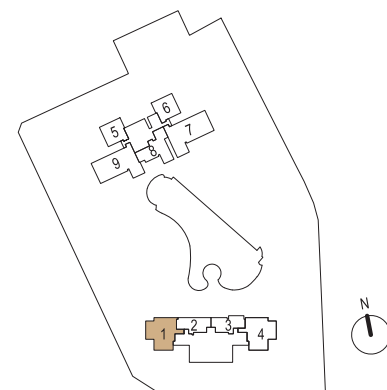


3-Bedroom



Type C2

107 sq m / 1152 sq ft
#05-01 to #14-01



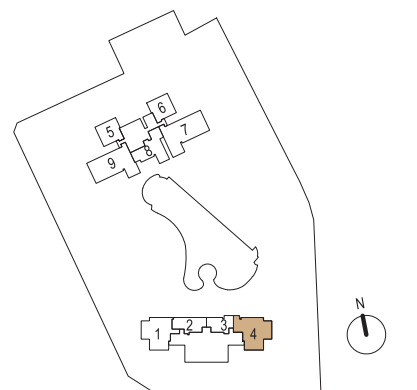
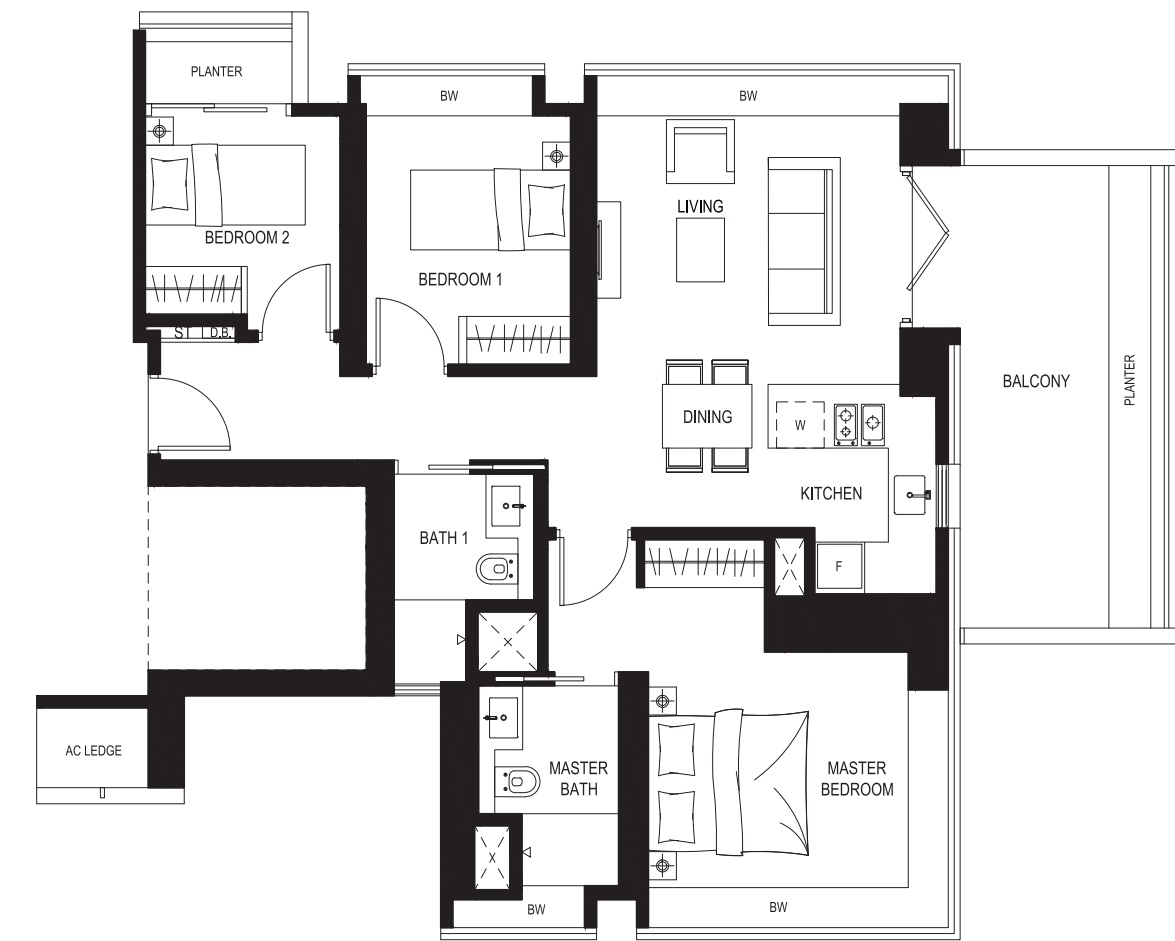
(a) Applicable to: #05-01 to #08-01, #14-01 (b) Applicable to: #09-01 to #13-01 (c) Applicable to: #05-01 to #08-01, #14-01
(d) Applicable to: #09-01 to #13-01 (e) Applicable to: #05-01 to #13-01 (f) Applicable to: #14-01
(g) Applicable to: #05-01 to #08-01 (h) Applicable to: #09-01 to #14-01
Area includes A/C ledge, balcony and void (where applicable). Plans are approximate measurements and are subject to amendments as may be required or approved by relevant authorities.

3-Bedroom



Type C3

106 sq m / 1141 sq ft
#05-04 to #07-04



Area includes A/C ledge, balcony and void (where applicable). Plans are approximate measurements and are subject to amendments as may be required or approved by relevant authorities.

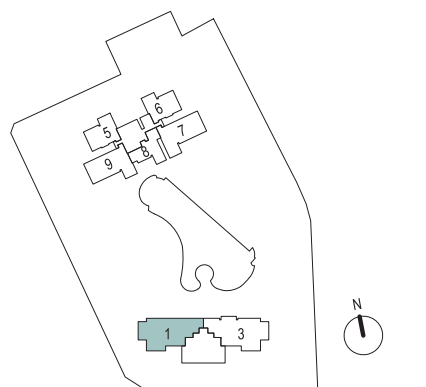
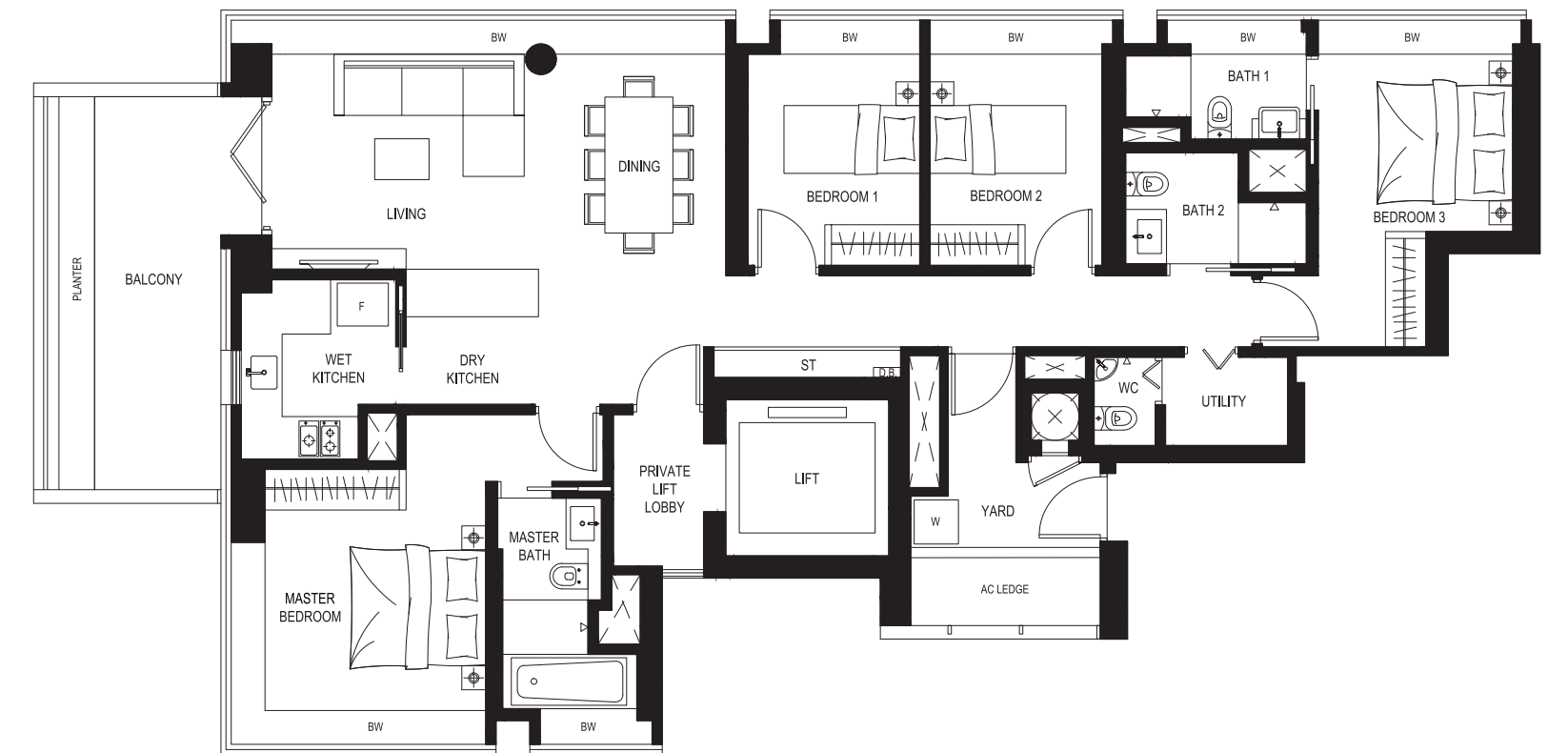
4-Bedroom



Type D1A
163 sq m / 1755 sq ft
#34-01



Actual Photo



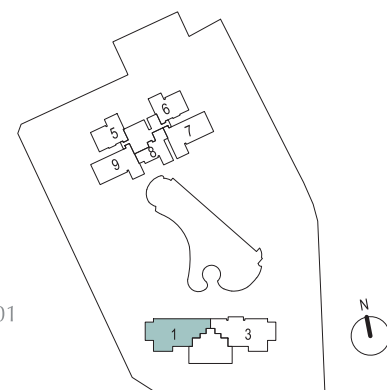
Area includes A/C ledge, balcony and void (where applicable). Plans are approximate measurements and are subject to amendments as may be required or approved by relevant authorities.

4-Bedroom



Type D1B

162 sq m / 1744 sq ft
#28-01 to #33-01



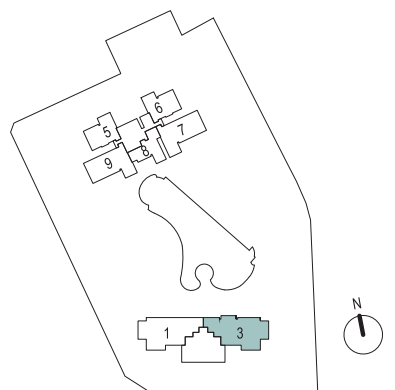
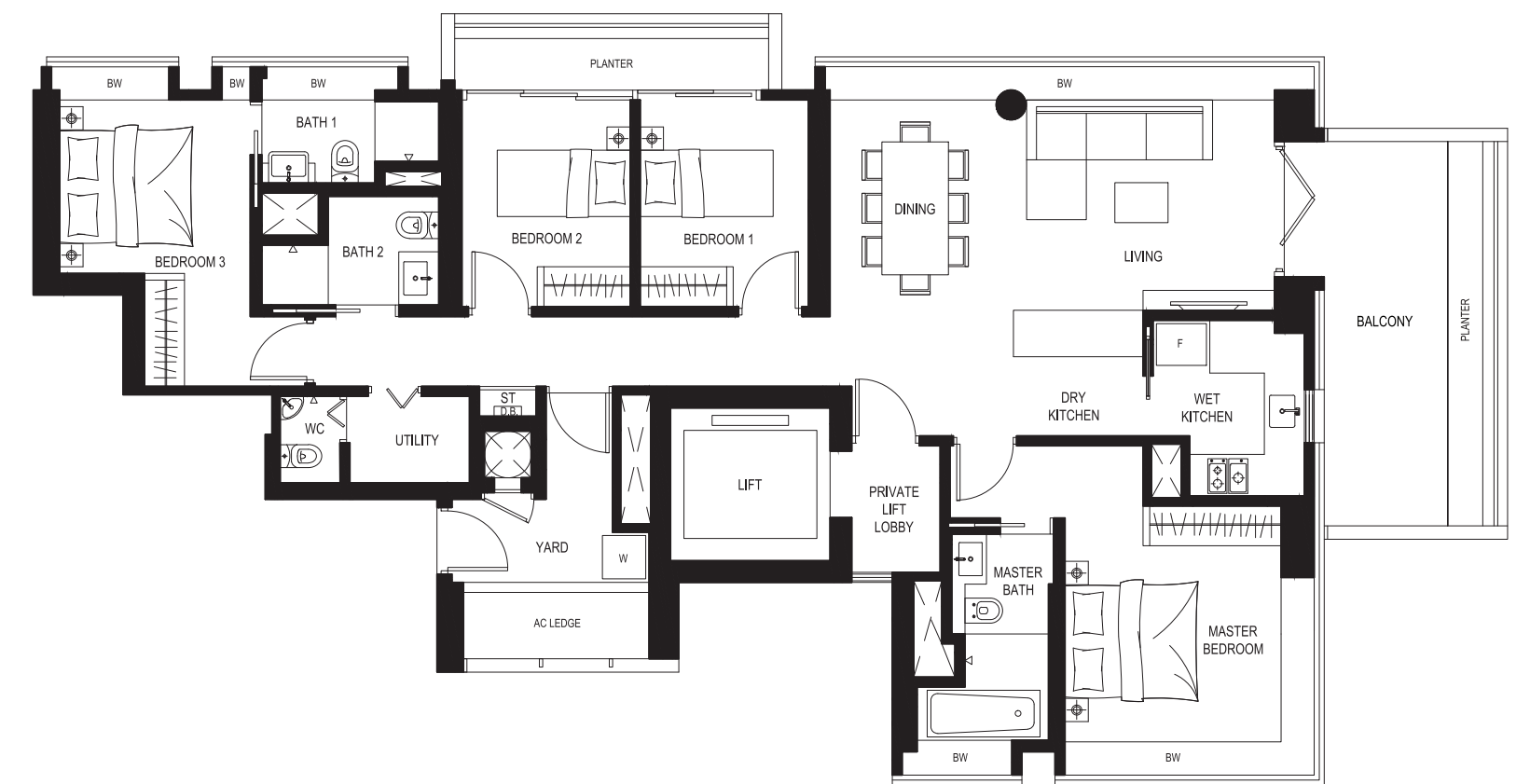
(a) Applicable to: #28-01 to #29-01 (b) Applicable to: #30-01 to #33-01 (c) Applicable to: #28-01 to #29-01 (d) Applicable to: #30-01 to #33-01
(e) Applicable to: #28-01 to #29-01 (f) Applicable to: #30-01 to #33-01 (g) Applicable to: #28-01 to #29-01 (h) Applicable to: 30-01 to #33-01
Area includes A/C ledge, balcony and void (where applicable). Plans are approximate measurements and are subject to amendments as may be required or approved by relevant authorities.

4-Bedroom



Type D2A

163 sq m / 1755 sq ft
#34-03

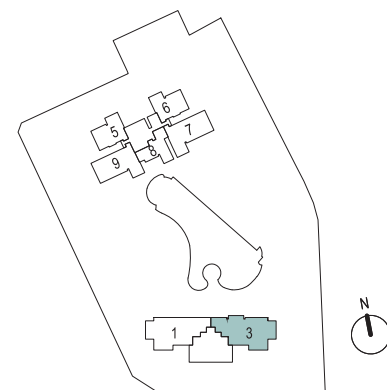


Area includes A/C ledge, balcony and void (where applicable). Plans are approximate measurements and are subject to amendments as may be required or approved by relevant authorities.

4-Bedroom



Type D2B
163 sq m / 1755 sq ft
#28-03 to #33-03

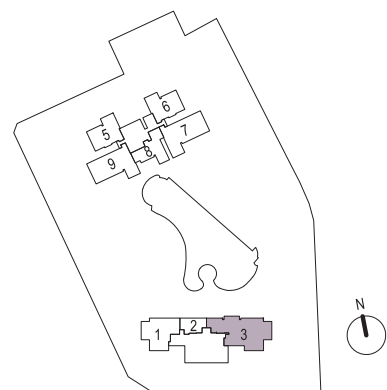


(a) Applicable to: #28-03 (b) Applicable to: #29-03 to #33-03 (c) Applicable to: #28-03 (d) Applicable to: #29-03 to #33-03
Area includes A/C ledge, balcony and void (where applicable). Plans are approximate measurements and are subject to amendments as may be required or approved by relevant authorities.

4-Bedroom Dual Key



Type DK1
157 sq m / 1690 sq ft
#08-03 to #27-03



(a) Applicable to: #08-03 to #09-03, #14-03 to #18-03, #23-03 to #27-03 (b) Applicable to: #10-03 to #13-03, #19-03 to #22-03
(c) Applicable to: #08-03, #14-03 to #18-03, #23-03 to #27-03 (d) Applicable to: #09-03 to #13-03, #19-03 to #22-03
(e) Applicable to: #08-03, #20-03 to #27-03 (f) Applicable to: #09-03 to #19-03 (g) Applicable to: #08-03 to #09-03, #23-03 to #27-03
(h) Applicable to: #10-03 to #22-03
Area includes A/C ledge, balcony and void (where applicable). Plans are approximate measurements and are subject to amendments as may be required or approved by relevant authorities.